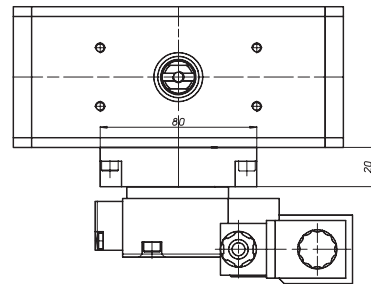
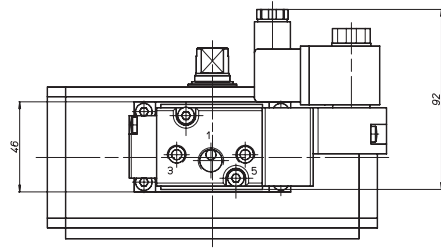
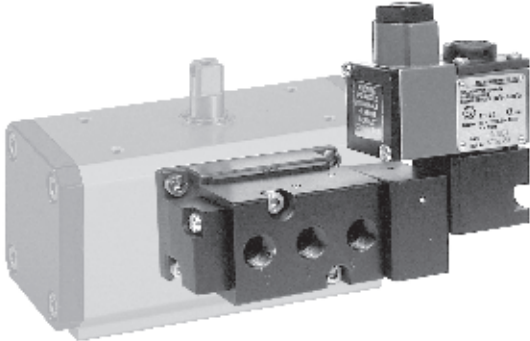


Elettrovalvola 3/2 - 5/2 NAMUR con piloti CNOMO 3/2 - 5/2 NAMUR solenoid valve with CNOMO interfaces



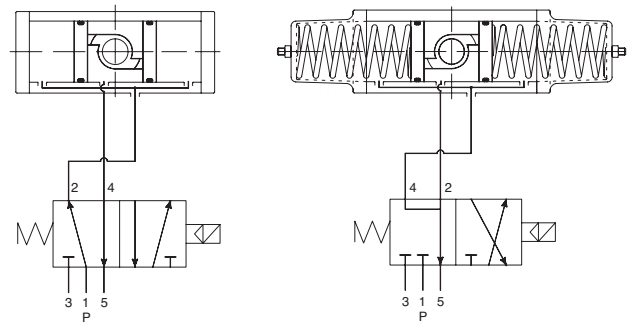
Caratteristiche principali Features

Elettrovalvola monostabile o bistabile 3/2 - 5/2 a norma NAMUR con interfaccia CNOMO per bobine
L'elettrovalvola é predisposta per la selezione tra la funzione 5/2 e 3/2 che si realizza usando una delle 2 differenti piastre di interfacciamento dell'elettrovalvola.
Bobina MC30 plug and socket
Potenza assorbita D.C.: 2,4 W
Potenza assorbita A.C.: 6 VA (15 VA max.)
Tolleranza tensione di alimentazione: $\pm 10\%$
Classe isolamento bobina: F
Grado di protezione con connettore: IP 65
Connessione elettrica: PG 9
Passaggio 6 mm-700l/min.
Connessioni pneumatiche: alimentazione 1/4"; scarico 1/8" ISO 228
Pressione elettrovalvola: da 3 a 8 bar
Temperatura ambiente: da -20°C a 60°C
Bobine EExN, EExd, EExm, EExia a richiesta

Solenoid valve monostable or bistable 3/2 - 5/2 as per NAMUR with CNOMO interface for coils
This solenoid valve is designed for the selection of the functions 5/2 and 3/2, which is realized using one of the two plates of the solenoid valve.
Coil MC30 plug and socket
Full-working input power - D.C.: 2,4 W
Full-working input power - A.C.: 6 VA (15 VA max.)
Supply voltage tolerances: $\pm 10\%$
Coil insulation: F-class
Protection with connector: IP65
Electric connection: PG 9
Bore 6 mm - 700l/min.
Pneumatic connections: inlet 1/4"; outlet 1/8" ISO 228
Max. pressure: from 3 to 8 bar
Ambient temperature: from -20°C to +60°C
Coils EExN, EExd, EExm, EExia on request

ARTICOLO A RICHIESTA PRODUCT ON REQUEST

Schema di funzionamento Working plan



* Sugli attuatori DA 480÷DA1920 - SR240÷SR960 l'elettrovalvola é ruotata di 90°, staffata tramite viti direttamente sull' attuttore senza basetta

* On actuators DA 480-DA1920 - SR240-SR960 the solenoid valve fits directly without mountig plate.

**Versione a richiesta **On request version

BOBINE COILS

| Codice Code | BBR92012 | BBR92024 | BBR92048 | BBR92110 | BBR91024 | BBR91048 | BBR9110 | BBR91220 | |
|-------------------|----------|----------|----------|-----------|----------|----------|---------|----------|--|
| Voltaggio Voltage | 12 Vdc** | 24 Vdc | 48 Vdc** | 110 Vdc** | 24 Vac | 48 Vac | 110Vac | 230 Vac | |

CODICI ELETTROVALVOLE SOLENOID VALVES CODES

| | |
|-----------------------------------|----------|
| Eletr. mono. Mono. solenoid valve | ER858100 |
| Eletr. Bist. Bist. solenoid valve | ER868100 |