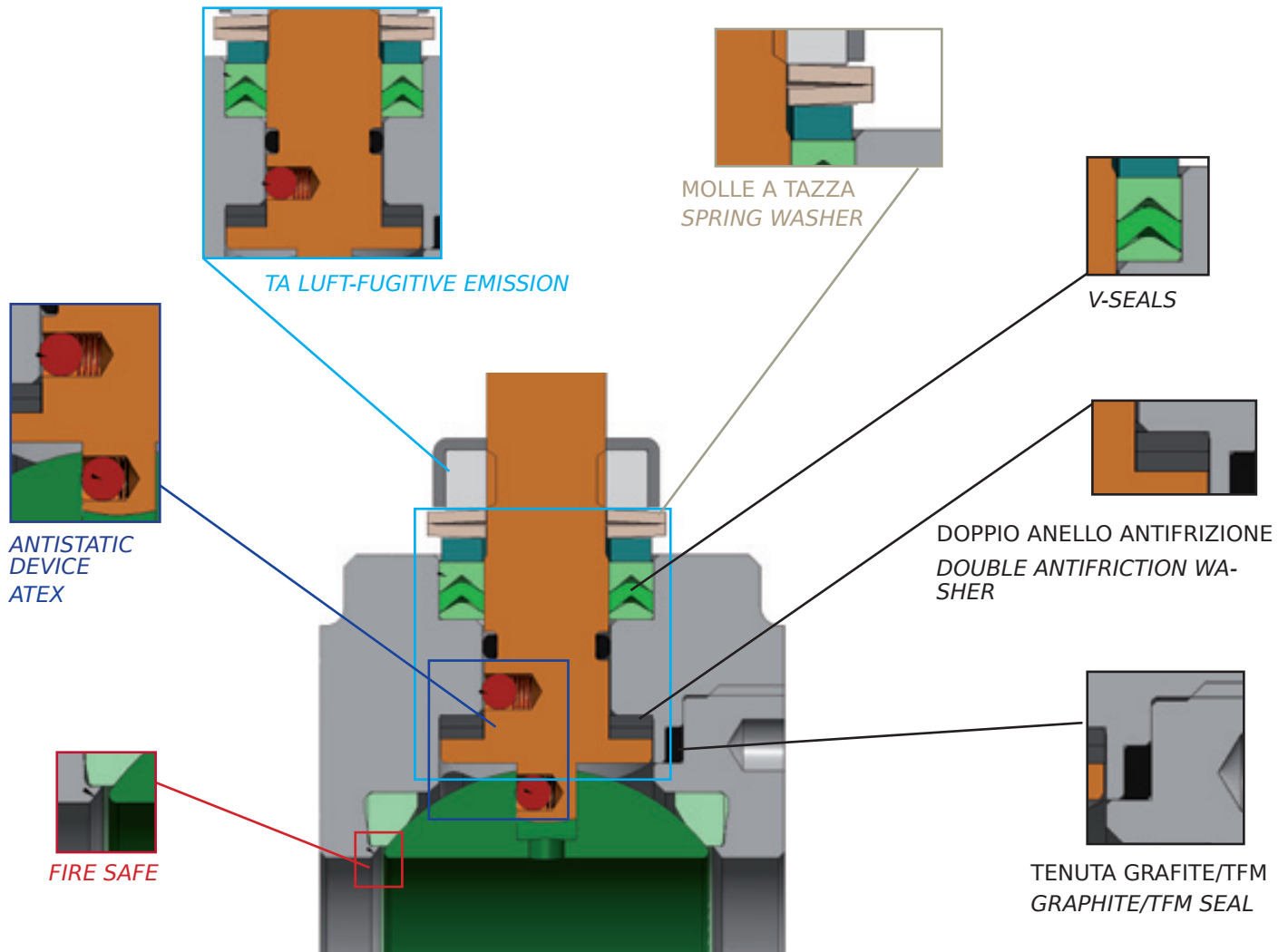




CARATTERISTICHE COSTRUTTIVE DELLE VALVOLE A SFERA OMAL OMAL BALL VALVES CONSTRUCTION DETAILS



Progettata secondo ASME/API/EN la valvola a sfera Omal nasce per un utilizzo con attuatore, non solo perchè viene ovviamente dotata di accoppiamento standardizzato per l'attuatore stesso, ma anche dal punto di vista della conformazione delle tenute, che garantiscono un numero di cicli molto elevato. La linea delle valvole a sfera OMAL, nelle sue versioni wafer, split wafer e split body evidenzia quegli accorgimenti che la pongono al di sopra della concorrenza. La costruzione "fire safe" secondo restrittive recenti norme, i dispositivi antistatici e la complessa tenuta dello stelo, corredate dalle relative certificazioni su TA LUFT E FUGITIVE EMISSION, ATEX E FIRE SAFE, sono la premessa per l'ottenimento di prestazioni e di affidabilità a tutta prova.

Designed in compliance with ASME/API/EN, Omal ball valves are meant to be operated with actuators. For this reason valves are provided with actuator connections and their sealing elements are specifically engineered for a very high number of cycles. OMAL wafer, split wafer and split body ball valves are designed with all the details which set them above many competitors. The "fire safe" version built in compliance with recent, very strict standards and provided with antistatic devices, a complex stem sealing system and all relevant fugitive emission, ATEX and fire safe certifications guarantees best performance and total reliability.

FIRE SAFE API 6FA - UNI EN ISO 10497.

TA LUFT/FUGITIVE EMISSION Grazie alla particolare doppia tenuta sullo stelo, costituita da un pacco di tenute a V caricato da molle a tazza, la valvola Omal è certificata secondo le severe norme sulle emissioni VDI 2440.

ATEX Le connessioni albero-corpo e albero-sfera sono dotate di dispositivo antistatico che assicura continuità elettrica: la valvola risulta così in accordo con la direttiva 94/9 EC - ATEX

STELO Montato dall'interno, risulta quindi anti-espulsione. Una doppia rondella antifrizione in PTFE assicura rotazione dell'albero a basso attrito, e alto numero di azionamenti garantendo un'ottima funzionalità alla valvola anche attuata.

FIRE SAFE: API 6 FA - UNI EN ISO 10497

TA LUFT/FUGITIVE EMISSION Thanks to the special stem double sealing system consisting of a V-pack loaded with Omal springs washer. OMAL valves are certified in compliance with very strict emission standards TA LUFT Tal - 194058 - 001

ATEX: The body-stem and ball-stem connections are provided with antistatic devices which guarantee power continuity. The valve is in compliance with Directive 94/9 EC - ATEX

STEM: Being assembled inside, the stem is completely anti blow-out. A double anti-friction washer in PTFE allows the stem to rotate with low friction and the valve to perform flawlessly for a very high number of cycles.

SPLIT BODY IN ACCIAIO INOX PN 16-40 ANSI 150-300

STAINLESS STEEL SPLIT BODY PN 16-40 ANSI 150-300



ESECUZIONE STANDARD

Sfera flottante, passaggio totale
 Tenuta soft-seat TFM 1600
 Norme per flange d'attacco EN 1092-1 ed. 2008; ANSI B 16.5
 Temperature di utilizzo vedi diagramma pressione temperatura
 Classe di pressione: PN16-40; ANSI 150-300
 Fluido intercettato: aria, acqua, gas, prodotti petroliferi e petrolchimici, fluidi aggressivi.
 Antistatic device EN12662-2
 Tenuta stelo: pacco a V di serie in TFM 1600
 Tenuta addizionale su stelo con O-ring FKM
 Stelo anti Blow-out
 Foratura piano per attuatore a norma ISO 5211
 Angolo di chiusura >7°

ESECUZIONI SPECIALI A RICHIESTA

Per altri tipi di flangiature contattare il nostro ufficio commerciale.
 Guarnizioni di tenuta in: PTFE caricato vetro (RPTFE-GF), PTFE caricato carbografite (RPTFE-CF). Per altri tipi di materiale contattare il nostro ufficio commerciale
 Tenuta integrale avvolgente in PTFE
 Esecuzione monodirezionale con foro di compensazione della pressione nella sfera
 Leva inox
 Dadi e molle stelo inox
 Per esecuzioni speciali con materiali (corpo/sfera/stelo) diversi dallo standard contattare il nostro ufficio commerciale

CERTIFICAZIONI

Conforme alla direttiva Europea 97/23 EC PED
 Conforme alla direttiva ATEX 94/9/CE
 Fugitive Emission UNI EN ISO 15848:2006
 TA-LUFT VDI 2440:2000
 FIRE SAFE: API 607:2005/ISO 10497:2010 - API6FA:1999
 API 6D: certificato n°6D-1007 solo per valvole con scartamento ANSI

NORME DI PROGETTAZIONE

Spessori corpo in accordo a: ASME B16.34, ASME VIII div.1, EN 12516.

API 6D

Materiali e rating in accordo ad ASME B16.34 per valvole ANSI ed EN 12516 per valvole PN

STANDARD FEATURES

Floating ball, full bore
 Soft-seat seal TFM 1600
 Standard for connecting flanges: EN 1092-1 ed. 2008; ANSI B16.5
 Operating temperature see temperature pressure diagram
 Pressure class: PN16-40 - ANSI 150-300
 Intercepted fluid: air, water, gas, petroleum and petrochemical products, aggressive fluids
 Antistatic device EN12662-2
 Stem seal: TFM 1600 V-ring packing
 Additional seal on stem with FKM O-ring
 Anti Blow-out stem
 Actuator connection as per standard ISO 5211
 Closing angle >7°

SPECIAL FEATURES ON REQUEST

For other flange types please contact our sales department.
 Sealing in: PTFE reinforced with glass (RPTFE-GF), PTFE reinforced with carbon-graphite (RPTFE-CF). For other types of materials please contact our sales department
 PTFE cavity filler seat
 Mono-directional version with pressure-relief hole in the ball
 Stainless steel lever
 Stainless steel Stem nuts and springs
 For special versions in materials different from the standard (body, ball, stem), please contact our sales department.

CERTIFICATIONS

In compliance with European Directive 97/23 EC PED
 In compliance with ATEX 94/9/CE Directive (on request)
 Fugitive Emission UNI EN ISO 15848:2006
 TA-LUFT VDI 2440:2000
 FIRE SAFE: API 607:2005/ISO 10497:2010 - API6FA:1999
 API 6D: certificate no 6D-1007 only for valves with ANSI face to face

ENGINEERING STANDARDS

Body thickness in compliance with: ASME B16.34, ASME VIII div.1, EN 12516

API 6D

Materials and rating in compliance with ASME B16.34 for ANSI valves and EN 12516 for PN valves



SPLIT BODY IN ACCIAIO AL CARBONIO PN16-40 ANSI 150-300 CARBON STEEL SPLIT BODY PN 16-40 - ANSI 150-300



ESECUZIONE STANDARD

Sfera flottante, passaggio totale
Tenuta soft-seat TFM 1600
Norme per flange d'attacco EN 1092-1 ed. 2008; ANSI B 16.5
Temperature di utilizzo vedi diagramma pressione temperatura
Classe di pressione: PN16-40; ANSI 150-300
Fluido intercettato: aria, acqua, gas, prodotti petroliferi.
Antistatic device EN12662-2
Tenuta stelo: pacco a V di serie in TFM 1600
Tenuta addizionale su stelo con O-ring FKM
Stelo anti Blow-out
Foratura piano per attuttore a norma ISO 5211
Angolo di chiusura $>7^\circ$
Trattamento superficiale brunitura

ESECUZIONI SPECIALI A RICHIESTA

Esecuzione per temperatura -40 C° in LF2
Per altri tipi di flangiature contattare il nostro ufficio commerciale.
Guarnizioni di tenuta in: PTFE caricato vetro (RPTFE-GF), PTFE caricato carbografite (RPTFE-CF). Per altri tipi di materiale contattare il nostro ufficio commerciale
Tenuta integrale avvolgente in PTFE
Esecuzione monodirezionale con foro di compensazione della pressione nella sfera
Leva inox
Dadi e molle stelo inox
Per esecuzioni speciali con materiali (corpo/sfera/stelo) diversi dallo standard contattare il nostro ufficio commerciale
Trattamento superficiale: zincatura bianca, verniciatura epossidica, (per altri trattamenti contattare il nostro ufficio commerciale).

CERTIFICAZIONI

Conforme alla direttiva Europea 97/23 EC PED
Conforme alla direttiva ATEX 94/9/CE
Fugitive Emission UNI EN ISO 15848 (2006)
TA-LUFT VDI 2440 (2000)
FIRE SAFE: API 607:2005/ISO 10497:2010 - API6FA:1999
API 6D: certificato n°6D-1007 solo per valvole con scartamento ANSI

NORME DI PROGETTAZIONE

Spessori corpo in accordo a: ASME B16.34, ASME VIII div.1, EN 12516.
API 6D
Materiali e rating in accordo ad ASME B16.34 per valvole ANSI ed EN 12516 per valvole PN

STANDARD FEATURES

Floating ball, full bore
Soft-seat seal TFM 1600
Standard for connecting flanges: EN 1092-1 ed. 2008; ANSI B16.5
Operating temperature see temperature pressure diagram
Pressure class: PN16-40; ANSI 150-300
Intercepted fluid: air, water, gas, petroleum and petrochemical products.
Antistatic device EN12662-2
Stem seal: TFM 1600 V-ring packing
Additional seal on stem with FKM O-ring
Anti Blow-out stem
Actuator connection as per standard ISO 5211
Closing angle $>7^\circ$
Superficial treatment: blueing

SPECIAL FEATURES ON REQUEST

LF2 carbon steel for low temperature execution (-40 C°)
For other flange types please contact our sales department.
Sealing in: PTFE reinforced with glass (RPTFE-GF), PTFE reinforced with carbon-graphite (RPTFE-CF). For other types of materials please contact our sales department
Cavity filler seat in PTFE
Mono-directional version with pressure-compensating hole in the ball
Stainless steel lever
For special versions in materials different from the standard (body, ball, stem), please contact our sales department.
Stainless steel Stem nuts and springs
Superficial treatment: white zinc coating, epoxy coating
For other coating please contact our sales department

CERTIFICATIONS

In compliance with European Directive 97/23 EC PED
In compliance with ATEX 94/9/CE Directive (on request)
Fugitive Emission UNI EN ISO 15848 (2006)
TA-LUFT VDI 2440 (2000)
FIRE SAFE: API 607:2005/ISO 10497:2010 - API6FA:1999
API 6D: certificato n°6D-1007 only for valves with ANSI face to face

ENGINEERING STANDARDS

Body thickness in compliance with: ASME B16.34, ASME VIII div.1, EN 12516.
API 6D
Materials and rating in compliance with ASME B16.34 for ANSI valves and EN 12516 for PN valves

DIAGRAMMA PRESSIONE TEMPERATURA PER VALVOLE CON CORPO IN ACCIAIO INOX TEMPERATURE PRESSURE DIAGRAM FOR STAINLESS STEEL BODY VALVES

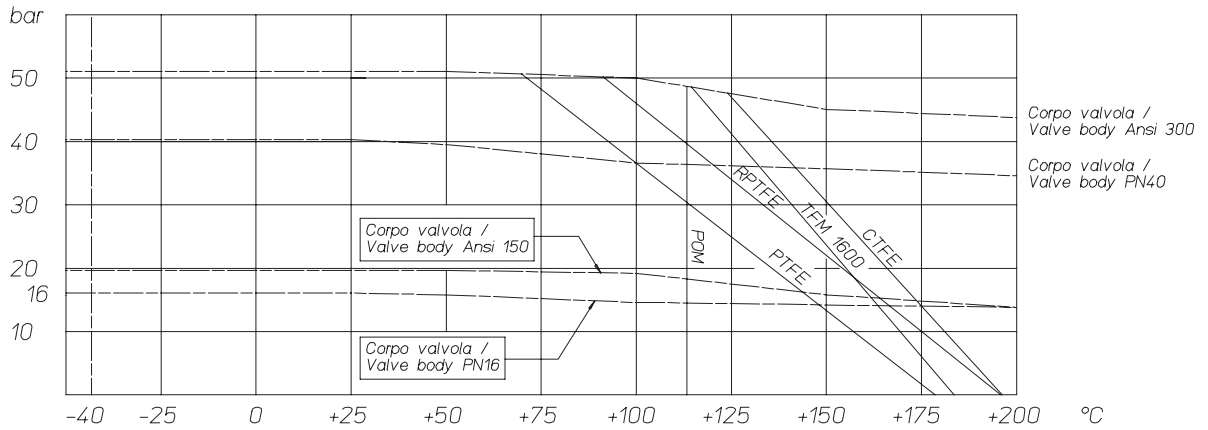
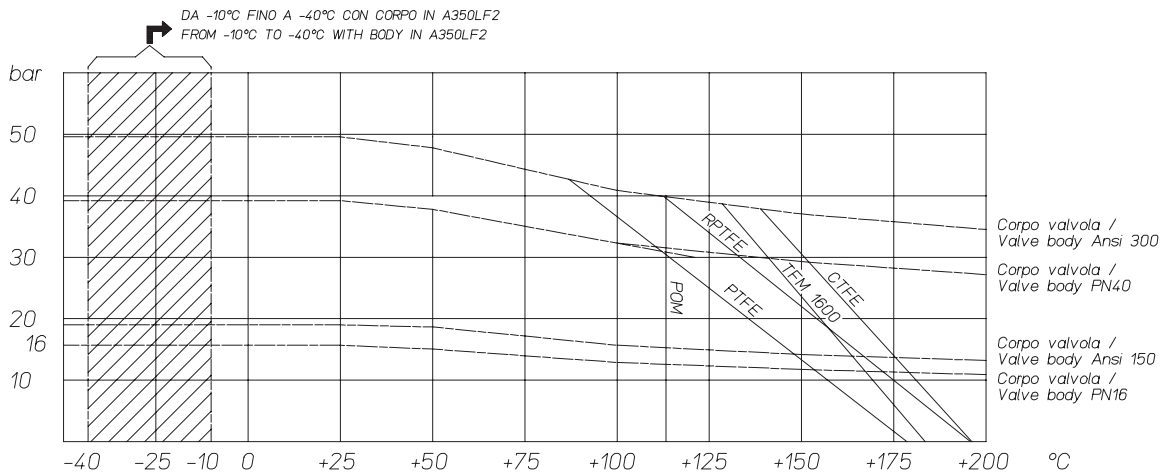


DIAGRAMMA PRESSIONE TEMPERATURA PER VALVOLE CON CORPO IN ACCIAIO AL CARBONIO TEMPERATURE PRESSURE DIAGRAM FOR CARBON STEEL BODY VALVES



COPPIE DI SPUNTO CON SEGGIO IN TFM 1600 E CON FLUIDO INTERCETTATO ACQUA (*)
BREAK AWAY TORQUE WITH TFM 1600 SEAT AND WATER INTERCEPTED FLUID (*)

misura size	DN15	DN20	DN25	DN32	DN40	DN50	DN65	DN80	DN100	DN125	DN150	DN200
0 bar												
PN16 bar	8	13	18	27	37	61	80	120	220	270	450	850
PN25 bar	9,5	15	20	29	40	67	95	130	240	383		
PN40 bar	11	17	21	31	41	75	110	165	290	510		
Ansi 150-20 bar	9	14	19	28	38	65	90	128	225	360	480	910
Ansi 300-50 bar	12	19	21	32	42	80	120	170	300	570		

INCREMENTO COPPIE CON ALTRI MATERIALI DI TENUTA
TORQUE INCREASE WITH DIFFERENT SEAT MATERIALS

POM: +10%	R.PTFE: +25%	CTFE: +30%	PEEK: +60%
-----------	--------------	------------	------------

(*): qualora si intercettino fluidi sgrassanti e/o contenenti particolato solido le coppie di manovra possono risultare maggiorate rispetto a quanto riportato in tabella

(*): If not lubricated fluids and/or fluids containing solid particles are intercepted, torques could be higher than those in the table.

I valori della coppia in Nm possono variare in funzione della temperatura e del fluido. Considerare un fattore di sicurezza pari a 1.4. Con frequenti cicli di apertura e chiusura la coppia di manovra può diminuire sensibilmente rispetto a quella iniziale.

Torque can vary depending on temperature and type of fluid, a safety factor 1.4 must be applied. Torque can drop on high frequency of operation.

Il dimensionamento degli attuatori pneumatici è stato fatto considerando una pressione minima di alimentazione pari a 5,6 barg. The sizing of pneumatic actuators has been done considering a minimum supply pressure of 5,6 barg.

MATERIALI / MATERIALS	Corpo in acciaio inox Stainless steel body	Corpo in acciaio carbonio Carbon steel body
DESCRIZIONE / DESCRIPTION	V470 / V471	V570 / V471
1 Corpo / Body	ASTM A182 F316 / A479 TP.316 (x) (1.4401 / X5CrNiMo17-12-2)	ASTM A105 (*)
2 Terminale / Connector		
3 Sfera / Ball	ASTM A351 CF8M (1.4408 / Gx5CrNiMo19-12-2)	ASTM A351 CF8 (**) (1.4308 / GX5CrNi19-10)
4 Stelo / Stem	ASTM A182 F316/A479 TP.316/A564-TP.630 (17-4 PH) (1.4401 / X5CrNiMo17-12-2)	ASTM A182 F6A / A479 TP.410 (***) (1.4006 / X12Cr13)
5 Sedi / Seats	TFM 1600 (*)	
6 Guarnizione corpo / Body gasket	GRAFOIL	
7 Tenuta inferiore / Bottom sealing	TFM 1600 (*)	
8 Pacco a "V" / Chevron rings	TFM 1600 (*)	
9 O'ring stelo / Stem o'ring	FKM (*)	
10 Anello premiguarnizione / Gland nut ring	ASTM A182 F304 / A479 TP.304 (1.4301 / X5CrNi18-10) / 174 PH (AISI 630)	Acciaio al carbonio zincato - Zinc coated carbon steel (x) (1)
11 Piastra bloccadado / Nut holder	AISI 304	
12 Dado stelo / Stem nut	UNI 3740-1 6S ZINCATO - galvanized (x)	
13 Molle a tazza / Spring washer	50CrV4 ZINCATO - galvanized (xx)	
14 Dispositivo antistatico / Antistatic device	ASTM A182 F316 / A479 TP.316	
15 Tiranti / Stud bolt	ASTM A193-B8	ASTM A193-B7
16 Dadi / Nut	ASTM A194-Gr.8	ASTM A194-2H
17 Controdado / Lock nut (x)	UNI 3740-1 6S ZINCATO - galvanized (x)	
18 Vite di fermo / Holder screw	A2 UNI EN ISO 3506-1	
19 Fermo di posizione / Holder	Acciaio al carbonio zincato - Zinc coated carbon steel (x)	
20 Leva / Lever (x)	Fe 37 ZINCATO - galvanized	

A RICHIESTA DISPONIBILE IN: AVAILABLE ON REQUEST:

(*) A350LF2

(x) 304 s.s.

(1): per DN150-200 disponibile solo on 304 s.s.

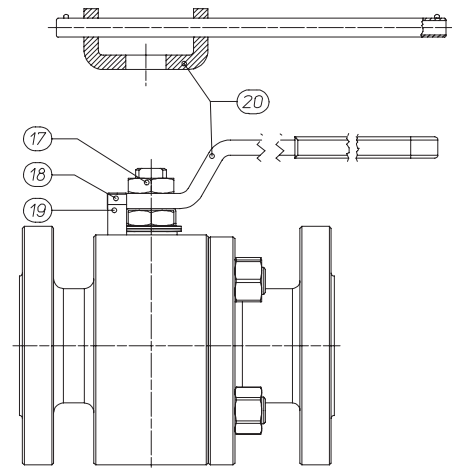
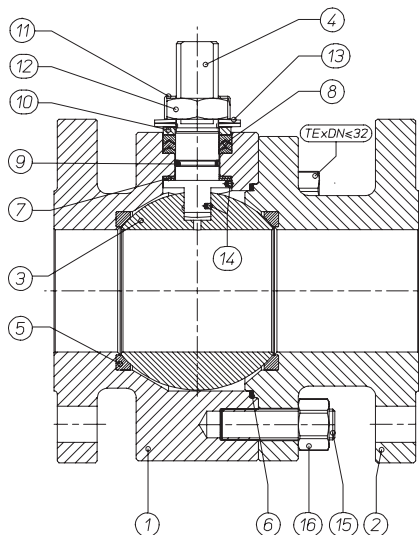
(**) A351 CF8M

(xx) 301 s.s.

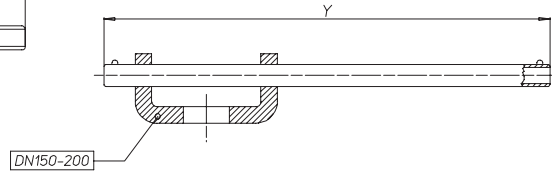
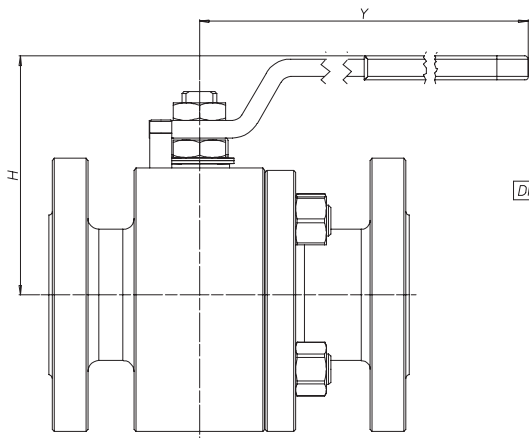
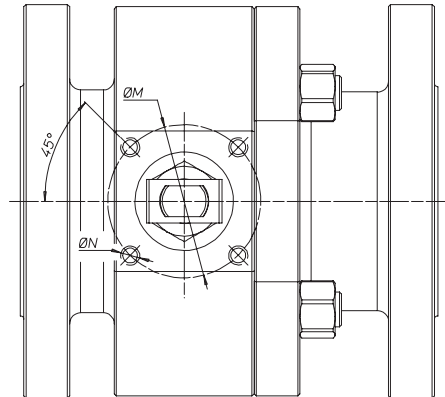
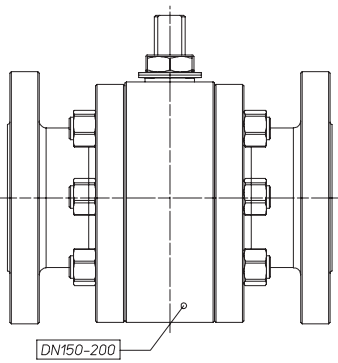
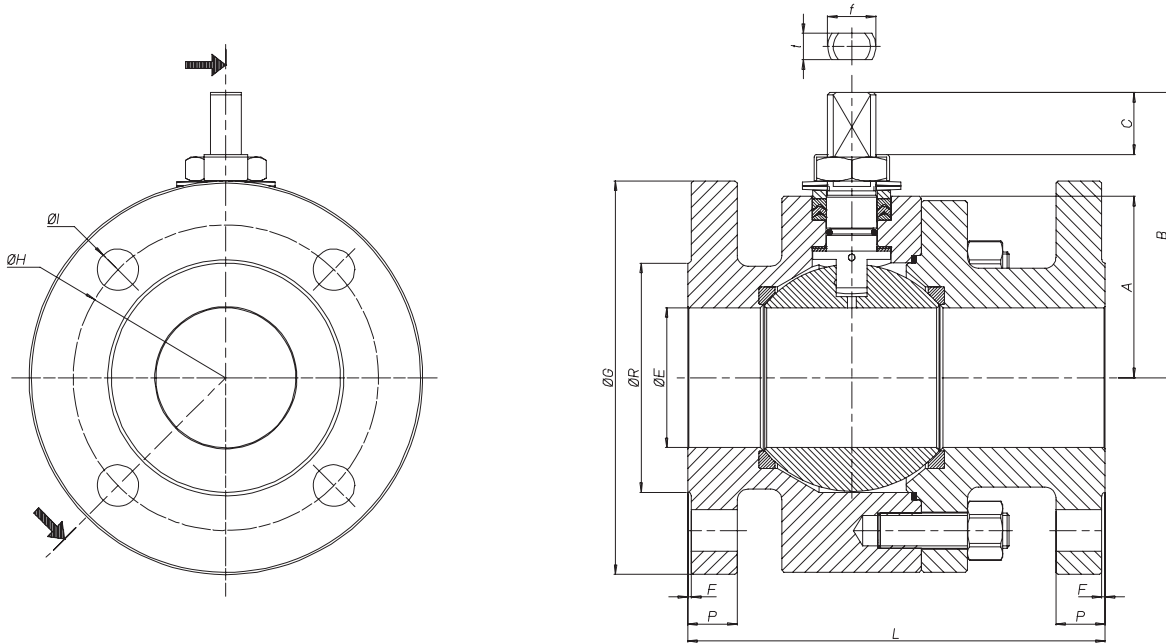
(1): for DN150-200 only 304 s.s.

(***) 316 S.S./17-4PH

(*) Altri materiali disponibili a richiesta Other materials available on request



SPLIT BODY PN 16-40 ANSI 150-300
 SPLIT BODY PN 16-40 ANSI 150-300



	DN15	DN20	DN25	DN32	DN40	DN50	DN65	DN80	DN100	DN125	DN150	DN200
H	70	73	86	91	108	117	142	149	198	208	274	321
Y	140	140	150	150	275	275	350	350	450	450	800	800



SPLIT BODY PN 16-40 ANSI 150-300

SPLIT BODY PN 16-40 ANSI 150-300



6D-1007

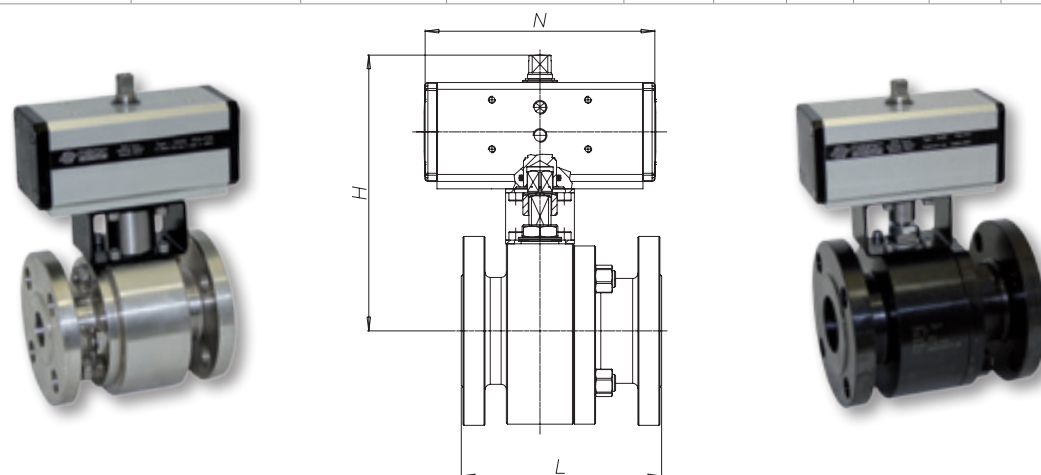
CERTIFICATO API 6D SOLO PER VALVOLE ANSI
API 6D CERTIFICATE ONLY FOR ANSI VALVES

CODICE VALVOLA ASSE NUDO / BARE SHAFT VALVE CODE (V_)
CODICE VALVOLA A LEVA / LEVER OPERATED VALVE CODE (L_)

Corpo/Body Stainless Steel	Corpo/body Carbon Steel	MISURA SIZE	ØE	PN/ANSI	A	B	C	ATT. ISO	ØM	ØN	f/t	ØG	ØR	F	P	ØH	N° FORI	ØI	Kg	L
L/V470B0604	L/V570A0604	DN15	13	PN16-40	32	52	10	F03	36	M5	10/6	95	45	2	16	65	4	14	2.8	115 (1)
L/V470BD604	L/V570AD604	DN15	13	ansi150	32	52	10	F03	36	M5	10/6	90	35	1.6	11.2	60.3	4	16	2.4	108 (3)
L/V471BD604	L/V571AD604	DN15	13	ansi300	32	52	10	F03	36	M5	10/6	95	35	1.6	14.5	66.7	4	16	2.7	140 (3)
L/V470B0605	L/V570A0605	DN20	19	PN16-40	35	55	10	F03	36	M5	10/6	105	58	2	18	75	4	14	3.6	120 (1)
L/V470BD605	L/V570AD605	DN20	19	ansi150	35	55	10	F03	36	M5	10/6	100	43	1.6	13	69.9	4	16	2.9	117(3)
L/V471BD605	L/V571AD605	DN20	19	ansi300	35	55	10	F03	36	M5	10/6	115	43	1.6	16.6	82.6	4	19	3.9	152(3)
L/V470B0606	L/V570A0606	DN25	25	PN16-40	42	68	15	F04	42	M5	12/8	115	68	2	18	85	4	14	5.2	125 (1)
L/V470BD606	L/V570AD606	DN25	25	ansi150	42	68	15	F04	42	M5	12/8	110	51	1.6	14.5	79.4	4	16	6.6	127 (3)
L/V471BD606	L/V571AD606	DN25	25	ansi300	42	68	15	F04	42	M5	12/8	125	51	1.6	18	88.9	4	19	5.9	165 (3)
L/V470B0607	L/V570A0607	DN32	32	PN16-40	47	73	15	F04	42	M5	12/8	140	78	2	18	100	4	18	7.6	130 (1)
L/V470BD607	L/V570AD607	DN32	32	ansi150	47	73	15	F04	42	M5	12/8	115	63.5	1.6	16	89	4	16	6.2	140 (3)
L/V471BD607	L/V571AD607	DN32	32	ansi300	47	73	15	F04	42	M5	12/8	135	63.5	1.6	19.5	98.4	4	19	8.7	178 (3)
L/V470B0608	L/V570A0608	DN40	38	PN16-40	58	93	21	F05	50	M6	16/10	150	88	3	18	110	4	18	10	140 (1)
L/V470BD608	L/V570AD608	DN40	38	ansi150	58	93	21	F05	50	M6	16/10	125	73	1.6	18	98.4	4	16	9.4	165 (3)
L/V471BD608	L/V571AD608	DN40	38	ansi300	58	93	21	F05	50	M6	16/10	155	73	1.6	21	114.3	4	22	12	190 (3)
L/V470B0609	L/V570A0609	DN50	51	PN16-40	67	102	21	F05	50	M6	16/10	165	102	3	20	125	4	18	14.3	150 (1)
L/V470BD609	L/V570AD609	DN50	51	ansi150	67	102	21	F05	50	M6	16/10	150	92	1.6	18	120.6	4	19	14.4	178 (4)
L/V471BD609	L/V571AD609	DN50	51	ansi300	67	102	21	F05	50	M6	16/10	165	92	1.6	21	127.0	8	19	17.2	216 (4)
L/V470B0610	L/V570A0610	DN65	64	PN16	83	130.5	28	F07	70	M8	22/14	185	122	3	18	145	4	18	20.2	170 (1)
L/V471B0610	L/V571A0610	DN65	64	PN25-40	83	130.5	28	F07	70	M8	22/14	185	122	3	22	145	8	18	28.2	270 (2)
L/V470BD610	L/V570AD610	DN65	64	ansi150	83	130.5	28	F07	70	M8	22/14	180	104.8	1.6	22.6	139.7	4	19	23.1	191 (4)
L/V471BD610	L/V571AD610	DN65	64	ansi300	83	130.5	28	F07	70	M8	22/14	190	104.8	1.6	26.1	149.2	8	22	27.3	241 (4)
L/V470B0611	L/V570A0611	DN80	76	PN16-40	90	137.5	28	F07	70	M8	22/14	200	138	3	24	160	8	18	25.4	180 (1)
L/V470BD611	L/V570AD611	DN80	76	ansi150	90	137.5	28	F07	70	M8	22/14	190	127	1.6	24	152.4	4	19	27	203 (4)
L/V471BD611	L/V571AD611	DN80	76	ansi300	96	137.5	28	F07	70	M8	22/14	210	127	1.6	29	168.3	8	22	28.6	282 (4)
L/V470B0612	L/V570A0612	DN100	102	PN16	111	172	35	F10	102	M10	30/18	220	158	3	20	180	8	18	38	190 (1)
L/V471B0612	L/V571A0612	DN100	102	PN25-40	111	172	35	F10	102	M10	30/18	235	162	3	22	190	8	22	57.8	300 (2)
L/V470BD612	L/V570AD612	DN100	102	ansi150	111	172	35	F10	102	M10	30/18	230	157.2	1.6	24.6	190.5	8	19	46	229 (4)
L/V471BD612	L/V571AD612	DN100	102	ansi300	111	172	35	F10	102	M10	30/18	255	157.2	1.6	32.6	200.0	8	22	67.7	305 (4)
L/V470B0613	L/V570A0613	DN125	118	PN16	117	182	35	F10	102	M10	30/18	250	188	3	22	210	8	18	68	325 (2)
L/V470BD613	L/V570AD613	DN125	118	ansi150	117	182	35	F10	102	M10	30/18	255	185.7	1.6	24	215.9	8	22	62	254 (3)
L/V471BD613	L/V571AD613	DN125	118	ansi300	125	182	35	F10	102	M10	30/18	280	185.7	1.6	36.6	235	8	22	89	381 (3)
L/V470B0614	L/V570A0614	DN150	152	PN16	154	227.5	40.5	F14	140	M16	45/30	285	212	3	22	240	8	22	121	350 (2)
L/V470BD614	L/V570AD614	DN150	152	ansi150	154	227.5	40.5	F14	140	M16	45/30	280	216	1.6	25.6	241.3	8	22	126	394 (4)
L/V470B0615	L/V570A0615	DN200	203	PN16	188	274	44.8	F14	140	M16	52/35	340	268	3	24	295	12	22	198	400 (2)
L/V470BD615	L/V570AD615	DN200	203	ansi150	188	274	44.8	F14	140	M16	52/35	345	269.9	1.6	29	298.4	8	22	210	457 (4)

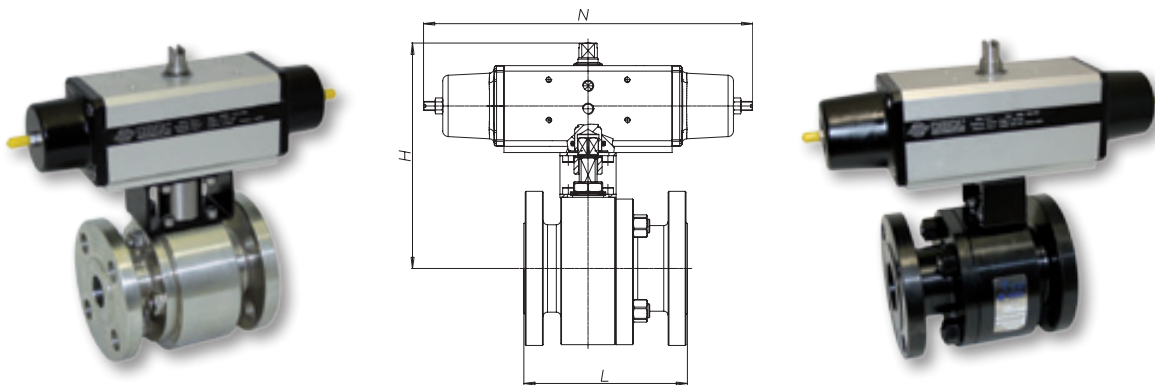
- (1) EN558 TAB. 2 COL. 14 / DIN 3202-1 F4
(2) EN558 TAB. 2 COL. 15 / DIN 3202-1 F5
(3) ANSI B16.10
(4) B16.10 / API6D

ATTUATORE PNEUMATICO DOPPIO EFFETTO <i>DOUBLE ACTING PNEUMATIC ACTUATOR</i>									PN 16-40
CORPO/BODY STAINLESS STEEL	CORPO/BODY CARBON STEEL	ATTUATORE actuator	KIT di montaggio connecting kit	MISURA size	PN	N	H	Kg	L
D470BH064	D570AH064	DA015401S	KCF033761	DN 15	16	115	144.4	3.9	115
D471BH064	D571AH064	DA030401S	KCF033761		25-40	130	152.4	4.1	
D470BH065	D570AH065	DA030401S	KCF033761	DN 20	16-40	130	155.4	5.0	120
D470BH066	D570AH066	DA030401S	KCF033760	DN 25	16-40	130	162.4	6.6	125
D470BH067	D570AH067	DA045402S	KCF043807	DN 32	16-40	144	172.7	9.0	130
D470BH068	D570AH068	DA060402S	KCF043763	DN 40	16-40	152	198.4	11.7	140
D470BH069	D570AH069	DA090401S	KCF053764	DN 50	16	169	214.5	16.3	150
D471BH069	D571AH069	DA120401S	KCF053764		25-40	184	233.4	17.1	
D470BH070	D570AH070	DA120401S	KCF053773	DN 65	16	184	259.4	23.3	170
D471BH070	D571AH070	DA180401S	KCF073765		25-40	212	269	31.8	
D470BH071	D570AH071	DA180401S	KCF073765	DN 80	16	212	276	28.7	180
D471BH071	D571AH071	DA240401S	KCF073765		25-40	242	284.4	30.7	
D470BH072	D570AH072	DA360401S	KCF103766	DN 100	16	264	338	46.5	190
D471BH072	D571AH072	DA480401S	KCF103766		25-40	295	353	67.3	
D470BH073	D570AH073	DA480401S	KCF103777	DN 125	16	295	359	77.6	325
D470BH074	D570AH074	DA720401S	KCF123900	DN 150	16	435	481	144	350
D470BH075	D570AH075	DA1440401S	KCF143902	DN 200	16	468	539	227	400



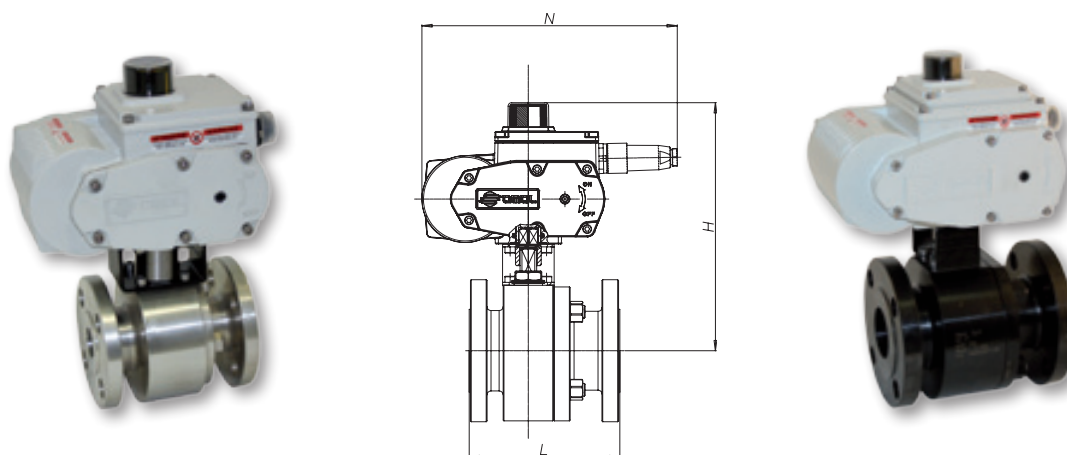
ATTUATORE PNEUMATICO DOPPIO EFFETTO <i>DOUBLE ACTING PNEUMATIC ACTUATOR</i>									ANSI 150-300
CORPO/BODY STAINLESS STEEL	CORPO/BODY CARBON STEEL	ATTUATORE actuator	KIT di montaggio connecting kit	MISURA size	PN	N	H	Kg	L
D470BHD64	D570AHD64	DA015401S	KCF033761	DN 15	Ansi 150	115	144.4	3.5	108
D471BHD64	D571AHD64	DA030401S			Ansi 300	130	152.4	4.0	140
D470BHD65	D570AHD65	DA030401S	KCF033761	DN 20	Ansi 150	130	155.4	4.0	117
D471BHD65	D571AHD65				Ansi 300	130	5.3	152	
D470BHD66	D570AHD66	DA030401S	KCF033760	DN 25	Ansi 150	130	162.4	6.0	127
D471BHD66	D571AHD66				Ansi 300	130	7.3	165	
D470BHD67	D570AHD67	DA045402S	KCF043762	DN 32	Ansi 150	144	172.7	7.9	140
D471BHD67	D571AHD67				Ansi 300	144	10.4	178	
D470BHD68	D570AHD68	DA060402S	KCF043763	DN 40	Ansi 150	152	198.4	12.3	165
D471BHD68	D571AHD68				Ansi 300	152	14.5	190	
D470BHD69	D570AHD69	DA090401S	KCF053764	DN 50	Ansi 150	169	209.5	15.7	178
D471BHD69	D571AHD69	DA120401S			Ansi 300	184	239.5	20.5	216
D470BHD70	D570AHD70	DA120401S	KCF053773	DN 65	Ansi 150	184	259.4	24.5	191
D471BHD70	D571AHD70	DA180401S	KCF073765		Ansi 300	212	169	31.1	241
D470BHD71	D570AHD71	DA180401S	KCF073765	DN 80	Ansi 150	212	276	30.4	203
D471BHD71	D571AHD71	DA240401S	KCF073886		Ansi 300	242	288.4	42.4	282
D470BHD72	D570AHD72	DA360401S	KCF103766	DN 100	Ansi 150	264	338	55.3	229
D471BHD72	D571AHD72	DA480401S	KCF103766		Ansi 300	295	353	77.3	305
D470BHD73	D570AHD73	DA480401S	KCF103777	DN 125	Ansi 150	295	359	75.7	254
D471BHD73	D571AHD73	DA720401S	KCF123898		Ansi 300	329.5	383	103	381
D470BHD74	D570AHD74	DA720401S	KCF123900	DN 150	Ansi 150	435	481	159	394
D470BHD75	D570AHD75	DA1440401S	KCF143902	DN 200	Ansi 150	468	539	238	457

ATTUATORE PNEUMATICO SEMPLICE EFFETTO <i>SPRING RETURN PNEUMATIC ACTUATOR</i>									PN 16-40
CORPO/BODY STAINLESS STEEL	CORPO/BODY CARBON STEEL	ATTUATORE actuator	KIT di montaggio connecting kit	MISURA size	PN	N	H	Kg	L
S470BH064	S570AH064	SR015401S	KCF033761	DN 15	16	221	152.4	4.5	115
S471BH064	S571AH064	SR030402S	KCF043767		25-40	240	162.4	4.8	
S470BH065	S570AH065	SR030402S	KCF043767	DN 20	16-40	240	165.4	6.0	120
S470BH066	S570AH066	SR030402S	KCF043807	DN 25	16-40	240	172.4	7.6	125
S470BH067	S570AH067	SR045401S	KCF053768	DN 32	16-40	294	184.5	10.8	130
S470BH068	S570AH068	SR060401S	KCF053764	DN 40	16-40	320	224.4	13.2	140
S470BH069	S570AH069	SR090401S	KCF073769	DN 50	16	375	243	18.8	150
S471BH069	S571AH069	SR120401S	KCF073769		25-40	372	253.4	20.7	
S470BH070	S570AH070	SR120401S	KCF073765	DN 65	16	372	279.4	26.7	170
S471BH070	S571AH070	SR180401S	KCF103770		25-40	436	291	37.2	
S470BH071	S570AH071	SR180401S	KCF103770	DN 80	16	436	298	35.4	180
S471BH071	S571AH071	SR240401S			25-40	456	310	36.2	
S470BH072	S570AH072	SR360401S	KCF104150	DN 100	16	566	369	56.0	190
S471BH072	S571AH072	SR480401S	KCF123771		25-40	602	381.2	76.8	
S470BH073	S570AH073	SR480401S	KCF123778	DN 125	16	602	387.2	87.1	325
S470BH074	S570AH074	SR720401S	KCF163901	DN 150	16	834	613	178	350
S470BH075	S570AH075	SR1440E16D8A	KCF163903	DN 200	16	975	622.5	282	400



ATTUATORE PNEUMATICO SEMPLICE EFFETTO <i>SPRING RETURN PNEUMATIC ACTUATOR</i>									ANSI 150-300
CORPO/BODY STAINLESS STEEL	CORPO/BODY CARBON STEEL	ATTUATORE actuator	KIT di montaggio connecting kit	MISURA size	ANSI	N	H	Kg	L
S470BHD64	S570AHD64	SR015401S	KCF033761	DN 15	Ansi 150	221	152.4	4.0	108
S471BHD64	S571AHD64	SR030402S	KCF043767		Ansi 300	240	162.4	4.7	140
S470BHD65	S570AHD65	SR030402S	KCF043767	DN 20	Ansi 150	240	165.4	5.3	117
S471BHD65	S571AHD65				Ansi 300	240	164.4	6.3	152
S470BHD66	S570AHD66	SR030402S	KCF043807	DN 25	Ansi 150	240	172.4	6.9	127
S471BHD66	S571AHD66				Ansi 300	240	172.4	8.3	165
S470BHD67	S570AHD67	SR045401S	KCF053768	DN 32	Ansi 150	294	184.5	7.2	140
S471BHD67	S571AHD67				Ansi 300	294	184.5	11.8	178
S470BHD68	S570AHD68	SR060401S	KCF053764	DN 40	Ansi 150	320	224.4	15.2	165
S471BHD68	S571AHD68				Ansi 300	320	224.4	17.8	190
S470BHD69	S570AHD69	SR090401S	KCF073769	DN 50	Ansi 150	357	243	18.8	178
S471BHD69	S571AHD69	SR120401S			Ansi 300	372	254.4	24.1	216
S470BHD70	S570AHD70	SR120401S	KCF073765	DN 65	Ansi 150	372	279.4	29.6	191
S471BHD70	S571AHD70	SR180401S	KCF103770		Ansi 300	436	291	36.5	241
S470BHD71	S570AHD71	SR180401S	KCF103770	DN 80	Ansi 150	436	298	37.0	203
S471BHD71	S571AHD71	SR240401S	KCF103892		Ansi 300	456	310	49.4	282
S470BHD72	S570AHD72	SR360401S	KCF104150	DN 100	Ansi 150	566	369	62.8	229
S471BHD72	S571AHD72	SR480401S	KCF123771		Ansi 300	602	381.2	86.8	305
S470BHD73	S570AHD73	SR480401S	KCF123778	DN 125	Ansi 150	602	387.2	81.8	254
S471BHD72	S571AHD73	SR720401S	KCF143899		Ansi 300	712	421	117	381
S470BHD74	S570AHD74	SR720401S	KCF163901	DN 150	Ansi 150	834	613	190	394
S470BHD75	S570AHD75	SR1440E16D8A	KCF163903	DN 200	Ansi 150	975	622.5	283	457

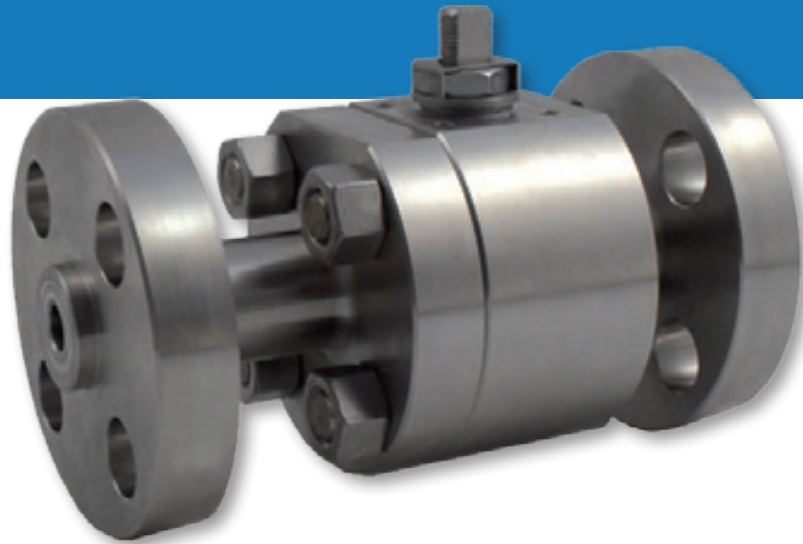
ATTUATORE ELETTRICO ON-OFF <i>ELECTRICAL ON-OFF ACTUATOR</i> PN 16-40									
CORPO/BODY STAINLESS STEEL	CORPO/BODY CARBON STEEL	ATTUATORE actuator	KIT di montaggio connecting kit	MISURA size	PN	N	H	Kg	L
C471BA5E064	C571AA5E064	EA0035A5C000	KCF053775	DN15	16-40	250	209	6.4	115
C471BA5E065	C571AA5E065	EA0035A5C000	KCF053775	DN20	16-40	250	212	6.4	120
C471BA5E066	C571AA5E066	EA0035A5C000	KCF053768	DN25	16-40	250	219	8.8	125
C471BA5G067	C571AA5G067	EA0070A5C000	KCF053768	DN32	16-40	250	224	11.2	130
C471BA5G068	C571AA5G068	EA0070A5C000	KCF053764	DN40	16-40	250	245	13.6	140
C471BA5I069	C571AA5I069	EA0130A5C000	KCF073769	DN50	16-40	280	274.6	21.6	150
C470BA5I070	C570AA5I070	EA0130A5C000	KCF073765	DN65	16	280	300.6	27.7	170
C471BA5K070	C571AA5K070	EA0240A5C000	KCF103770		25-40	280	300.6	35.6	270
C471BA5K071	C571AA5K071	EA0240A5C000	KCF103770	DN80	16-40	280	307.6	32.9	180
E470B16N072	E570A16N072	AE160040	KCE364166	DN100	16	256.5	376	48.5	190
E471B16N072	E571A16N072	EA160040	KCE363776		25-40	256.5	376	68	300
E470B16N073	E570A16N073	AE160040	KCE363776	DN125	16	256.5	382	78.5	325
E470B16R074	E570A16R074	AE160060	KCE563908	DN150	16	381	488	144	350
E470B16T075	E570A16T075	AE160100	KCE563909	DN200	16	381	522	211	400



ATTUATORE ELETTRICO ON-OFF <i>ELECTRICAL ON-OFF ACTUATOR</i> ANSI 150-300									
CORPO/BODY STAINLESS STEEL	CORPO/BODY CARBON STEEL	ATTUATORE actuator	KIT di montaggio connecting kit	MISURA size	ANSI	N	H	Kg	L
C470BA5ED64	C570AA5ED64	EA0035A5C000	KCF053775	DN15	Ansi 150	250	209	6.0	108
C471BA5ED64	C571AA5ED64				Ansi 300	250	209	6.3	140
C470BA5ED65	C570AA5ED65	EA0035A5C000	KCF053775	DN20	Ansi 150	250	212	6.5	117
C471BA5ED65	C571AA5ED65				Ansi 300	250	212	7.5	152
C470BA5ED66	C570AA5ED66	EA0035A5C000	KCF053768	DN25	Ansi 150	250	219	8.2	127
C471BA5ED66	C571AA5ED66				Ansi 300	250	219	9.5	165
C470BA5GD67	C570AA5GD67	EA0070A5C000	KCF053768	DN32	Ansi 150	250	224	7.8	140
C471BA5GD67	C571AA5GD67				Ansi 300	250	224	12.3	178
C470BA5GD68	C570AA5GD68	EA0070A5C000	KCF053764	DN40	Ansi 150	250	245	13.0	165
C471BA5GD68	C571AA5GD68				Ansi 300	250	245	15.6	190
C470BA5ID69	C570AA5ID69	EA0130A5C000	KCF073769	DN50	Ansi 150	280	274.6	21.8	178
C471BA5ID69	C571AA5ID69				Ansi 300	280	274.6	27.0	216
C470BA5ID70	C570AA5ID70	EA0130A5C000	KCF073765	DN65	Ansi 150	280	300.6	30.5	191
C471BA5KD70	C571AA5KD70				EA0240A5C000	KCF103770	Ansi 300	280	300.6
C470BA5KD71	C570AA5KD71	EA0240A5C000	KCF103770	DN80	Ansi 150	280	307.6	34.5	203
C471BA5KD71	C571AA5KD71				KCF103892	Ansi 300	280	307.6	45.1
E470B16ND72	E570A16ND72	AE160040	KCE363776	DN100	Ansi 150	256.5	376	56.5	229
E471B16ND72	E571A16ND72				Ansi 300	256.5	376	78	305
E470B16ND73	E570A16ND73	AE160040	KCE363779	DN125	Ansi 150	256.5	382	72.5	254
E471B16RD73	E571A16RD73	AE160060	KCE563907		Ansi 300	381	439	112	381
E470B16RD73	E570A16RD73	AE160060	KCE563908	DN150	Ansi 150	381	488	149	394
E470B16TD73	E570A16TD73	AE160100	KCE563909	DN200	Ansi 150	381	522	223	457



SPLIT BODY IN ACCIAIO INOX PN 63-100 ANSI 600 STAINLESS STEEL SPLIT BODY PN 63-100 ANSI 600



ESECUZIONE STANDARD

Sfera flottante, passaggio totale
Tenuta soft-seat: DEVLON
Norme per flange d'attacco: ANSI B16.5; EN 1092-1 ED.2008
Temperature di utilizzo vedi diagramma pressione temperatura
Classe di pressione: ANSI 600 / PN 63-100
Fluido intercettato: aria, acqua, gas, prodotti petroliferi e petrolchimici, fluidi aggressivi.
Antistatic device EN12662-2
Tenuta stelo: pacco a V di serie in TFM 1600
Tenuta addizionale su stelo con O-ring FKM
Stelo anti Blow-out
Foratura piano per attuatore a norma ISO 5211
Angolo di chiusura >7°

ESECUZIONI SPECIALI A RICHIESTA

Per altri tipi di flangiature contattare il nostro ufficio commerciale.
Guarnizioni di tenuta in: PTFE caricato vetro (RPTFE-GF), PTFE caricato carbografite (RPTFE-CF). Per altri tipi di materiale contattare il nostro ufficio commerciale
Esecuzione monodirezionale con foro di compensazione della pressione nella sfera
Leva inox
Dadi e molle stelo inox
Per esecuzioni speciali con materiali (corpo/sfera/stelo) diversi dallo standard contattare il nostro ufficio commerciale

CERTIFICAZIONI

Conforme alla direttiva Europea 97/23 EC PED
Conforme alla direttiva ATEX 94/9/CE
TA-LUFT VDI 2440:2000
FIRE SAFE: DESIGN
API 6D: certificato n°6D-1007 solo per valvole con scartamento ANSI

NORME DI PROGETTAZIONE

Spessori corpo in accordo a: ASME B16.34, ASME VIII div.1, EN 12516.
API 6D
Materiali e rating in accordo ad ASME B16.34 per valvole ANSI ed EN 12516 per valvole PN

STANDARD FEATURES

Floating ball, full bore
Soft-seat seal: DEVLON
Standard for connecting flanges: ANSI B16.5; EN 1092-1 ED.2008
Operating temperature see temperature pressure diagram
Pressure class: ANSI 600 / PN 63-100
Intercepted fluid: air, water, gas, petroleum and petrochemical products, aggressive fluids
Antistatic device EN12662-2
Stem seal: TFM 1600 V-ring packing
Additional seal on stem with FKM O-ring
Anti Blow-out stem
Actuator connection as per standard ISO 5211
Closing angle >7°

SPECIAL FEATURES ON REQUEST

For other flange types please contact our sales department.
Sealing in: PTFE reinforced with glass (RPTFE-GF), PTFE reinforced with carbon-graphite (RPTFE-CF). For other types of materials please contact our sales department
Mono-directional version with pressure-relief hole in the ball
Stainless steel lever
Stainless steel Stem nuts and springs
For special versions in materials different from the standard (body, ball, stem), please contact our sales department.

CERTIFICATIONS

In compliance with European Directive 97/23 EC PED
In compliance with ATEX 94/9/CE Directive (on request)
TA-LUFT VDI 2440:2000
FIRE SAFE: DESIGN
API 6D: certificate no 6D-1007 only for valves with ANSI face to face

ENGINEERING STANDARDS

Body thickness in compliance with: ASME B16.34, ASME VIII div.1, EN 12516
API 6D
Materials and rating in compliance with ASME B16.34 for ANSI valves and EN 12516 for PN valves



ESECUZIONE STANDARD

Sfera flottante, passaggio totale
 Tenuta soft-seat DEVLON
 Norme per flange d'attacco ANSI B16.5; EN1092-1 ED.2008
 Temperature di utilizzo vedi diagramma pressione temperatura
 Classe di pressione: ANSI 600 / PN63-100
 Fluido intercettato: aria, acqua, gas, prodotti petroliferi.
 Antistatic device EN12662-2
 Tenuta stelo: pacco a V di serie in TFM
 Tenuta addizionale su stelo con O-ring FKM
 Stelo anti Blow-out
 Foratura piano per attuatore a norma ISO 5211
 Angolo di chiusura >7°
 Trattamento superficiale brunitura

ESECUZIONI SPECIALI A RICHIESTA

Esecuzione per temperatura -40 C° in LF2
 Per altri tipi di flangiature contattare il nostro ufficio commerciale.
 Guarnizioni di tenuta in: PTFE caricato vetro (RPTFE-GF), PTFE caricato carbografite (RPTFE-CF). Per altri tipi di materiale contattare il nostro ufficio commerciale
 Esecuzione monodirezionale con foro di compensazione della pressione nella sfera
 Leva inox
 Dadi e molle stelo inox
 Per esecuzioni speciali con materiali (corpo/sfera/stelo) diversi dallo standard contattare il nostro ufficio commerciale
 Trattamento superficiale: zincatura bianca, verniciatura epossidica, (per altri trattamenti contattare il nostro ufficio commerciale).

CERTIFICAZIONI

Conforme alla direttiva Europea 97/23 EC PED
 Conforme alla direttiva ATEX 94/9/CE
 TA-LUFT VDI 2440 (2000)
 FIRE SAFE: DESIGN
 API 6D: certificato n°6D-1007 solo per valvole con scartamento ANSI

NORME DI PROGETTAZIONE

Spessori corpo in accordo a: ASME B16.34, ASME VIII div.1, EN 12516.

API 6D

Materiali e rating in accordo ad ASME B16.34 per valvole ANSI ed EN 12516 per valvole PN

STANDARD FEATURES

Floating ball, full bore
 Soft-seat seal DEVLON
 Standard for connecting flanges: ANSI B16.5; EN1092-1 ED.2008
 Operating temperature see temperature pressure diagram
 Pressure class: ANSI 600 / PN63-100
 Intercepted fluid: air, water, gas, petroleum and petrochemical products.
 Antistatic device EN12662-2
 Stem seal: TFM 1600 V-ring packing
 Additional seal on stem with FKM O-ring
 Anti Blow-out stem
 Actuator connection as per standard ISO 5211
 Closing angle >7°
 Superficial treatment: blueing

SPECIAL FEATURES ON REQUEST

LF2 carbon steel for low temperature execution (-40 C°)
 For other flange types please contact our sales department.
 Sealing in: PTFE reinforced with glass (RPTFE-GF), PTFE reinforced with carbon-graphite (RPTFE-CF). For other types of materials please contact our sales department
 Mono-directional version with pressure-compensating hole in the ball
 Stainless steel lever
 For special versions in materials different from the standard (body, ball, stem), please contact our sales department.
 Stainless steel Stem nuts and springs
 Superficial treatment: white zinc coating, epoxy coating
 For other coating please contact our sales department

CERTIFICATIONS

In compliance with European Directive 97/23 EC PED
 In compliance with ATEX 94/9/CE Directive (on request)
 TA-LUFT VDI 2440 (2000)
 FIRE SAFE: DESIGN
 API 6D: certificato n°6D-1007 only for valves with ANSI face to face

ENGINEERING STANDARDS

Body thickness in compliance with: ASME B16.34, ASME VIII div.1, EN 12516.

API 6D

Materials and rating in compliance with ASME B16.34 for ANSI valves and EN 12516 for PN valves

DIAGRAMMA PRESSIONE TEMPERATURA PER VALVOLE CON CORPO IN ACCIAIO INOX TEMPERATURE PRESSURE DIAGRAM FOR STAINLESS STEEL VALVES

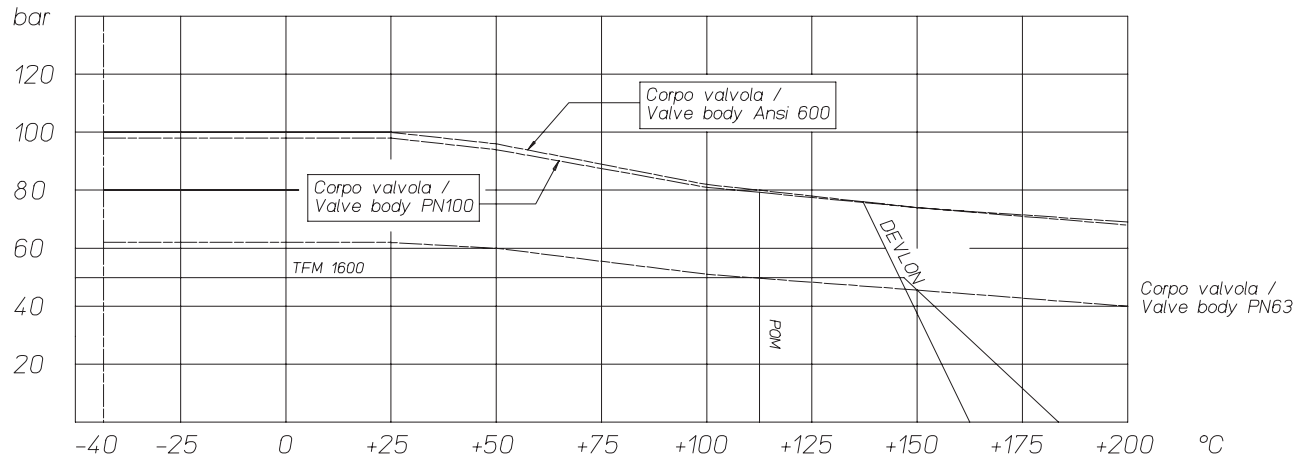
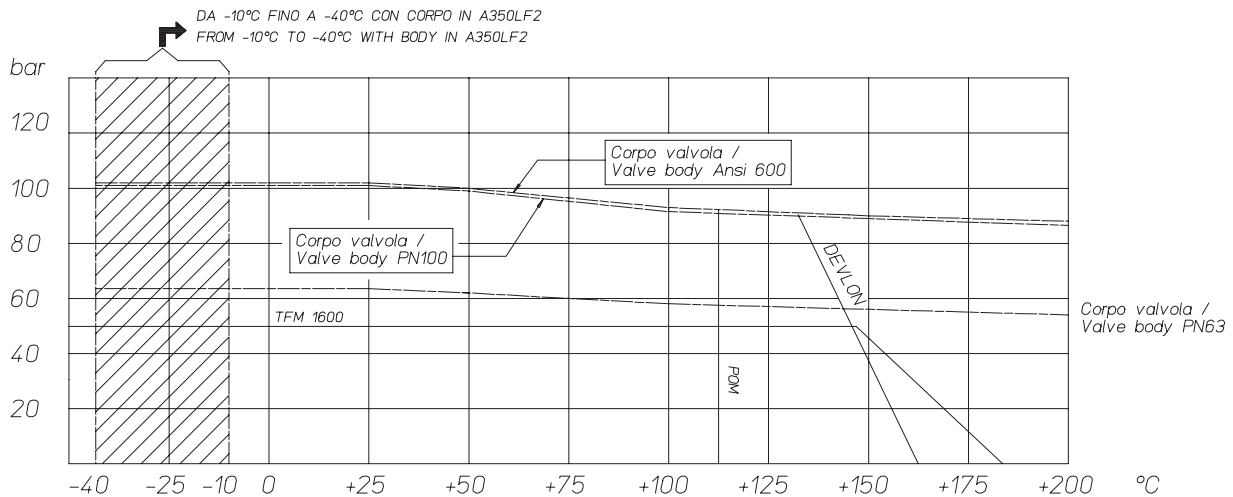


DIAGRAMMA PRESSIONE TEMPERATURA PER VALVOLE CON CORPO IN ACCIAIO AL CARBONIO TEMPERATURE PRESSURE DIAGRAM FOR CARBON STEEL VALVES



Il dimensionamento degli attuatori pneumatici è stato fatto considerando una pressione minima di alimentazione pari a 5,6 barg.
The sizing of pneumatic actuators has been done considering a minimum supply pressure of 5,6 barg.

MATERIALI / MATERIALS	Corpo in acciaio inox	Corpo in acciaio carbonio
	Stainless steel body	Carbon steel body
DESCRIZIONE / DESCRIPTION	V472 / V473	V572 / V573
1 Corpo / Body	ASTM A182 F316 / A479 TP.316 (x) (1.4401 / X5CrNiMo17-12-2)	ASTM A105 (*)
2 Terminale / Connector		
3 Sfera / Ball	ASTM A351 CF8M (1.4408 / Gx5CrNiMo19-12-2)	ASTM A351 CF8 (**) (1.4308 / GX5CrNi19-10)
4 Stelo / Stem	ASTM A564 Tp.630 (17-4PH)	
5 Sedi / Seats	DEVLON	
6 Guarnizione corpo / Body gasket	GRAFOIL	
7 Tenuta inferiore / Bottom sealing	TFM 1600	
8 Pacco a "V" / Chevron rings	TFM 1600	
9 O'ring stelo / Stem o'ring	FKM	
10 Anello premiguarnizione / Gland nut ring	ASTM A182 F304 / A479 TP.304 (1.4301 / X5CrNi18-10)	Acciaio al carbonio zincato - Zinc coated carbon steel (x)
11 Piastra bloccadado / Nut holder	AISI 304	
12 Dado stelo / Stem nut	UNI 3740-1 6S ZINCATO - galvanized (x)	
13 Molle a tazza / Spring washer	50CrV4 ZINCATO - galvanized (xx)	
14 Dispositivo antistatico / Antistatic device	ASTM A182 F316 / A479 TP.316	
15 Tiranti / Stud bolt	ASTM A193-B8	ASTM A193-B7
16 Dadi / Nut	ASTM A194-Gr.8	ASTM A194-2H
17 Controdado / Lock nut (x)	UNI 3740-1 6S ZINCATO - galvanized	
18 Vite di fermo / Holder screw	A2 UNI EN ISO 3506-1	
19 Fermo di posizione / Holder screw	Acciaio al carbonio zincato - Zinc coated carbon steel	
20 Leva / Lever (x)	Fe 37 ZINCATO - galvanized	

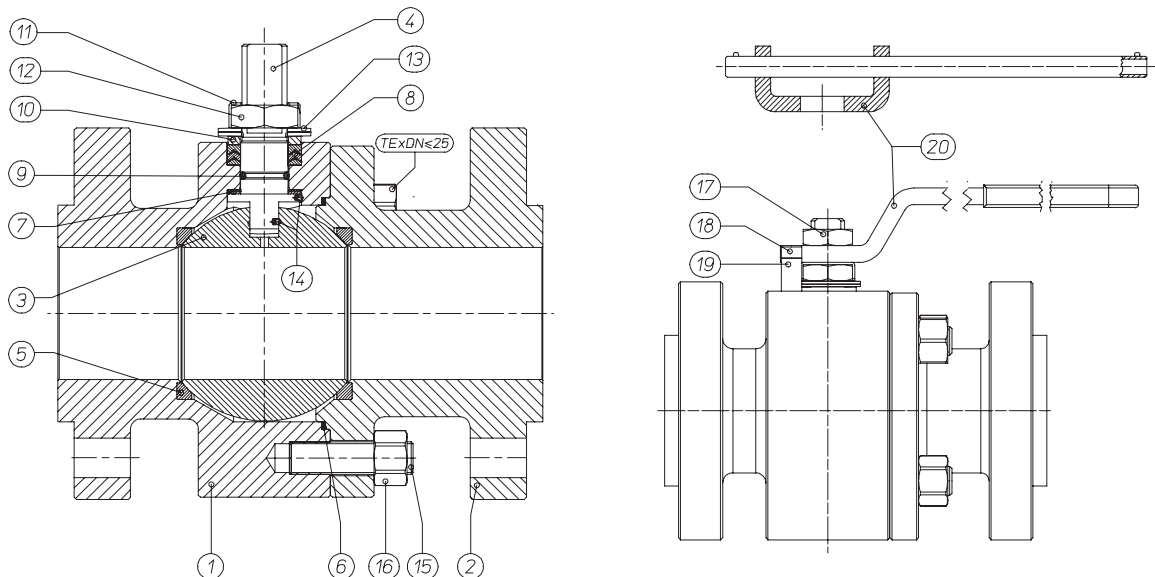
A RICHIESTA DISPONIBILE IN: AVAILABLE ON REQUEST:

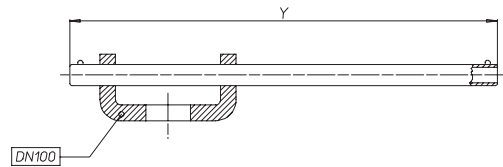
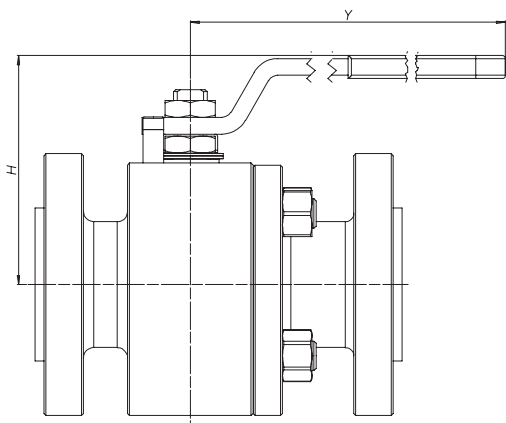
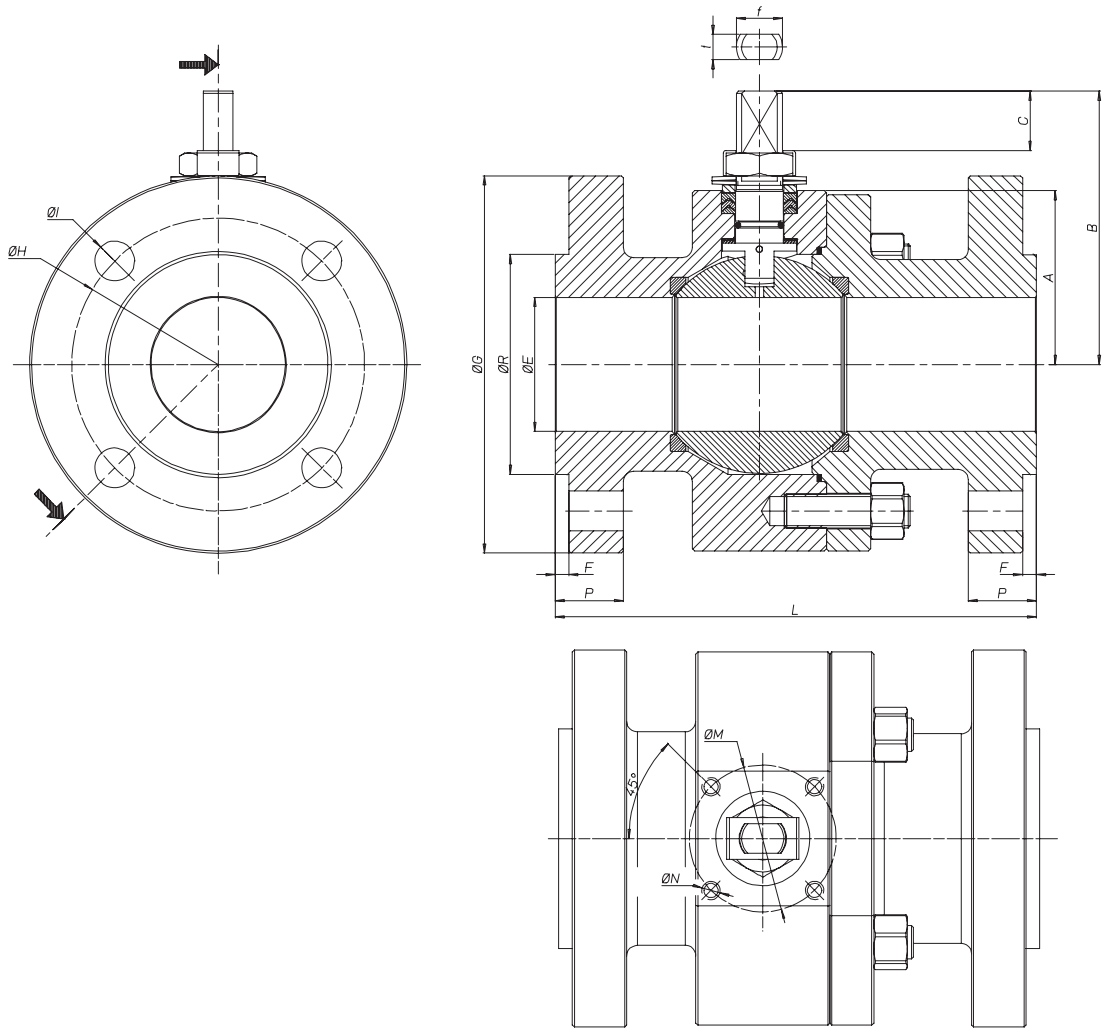
(*) A350LF2

(**) A351 CF8M

(x) 304 s.s.

(xx) 301 s.s.





	DN15	DN20	DN25	DN32	DN40	DN50	DN65	DN80	DN100
H	80	82	94	91	119	131	180	188	233
Y	150	150	275	275	350	350	450	450	800

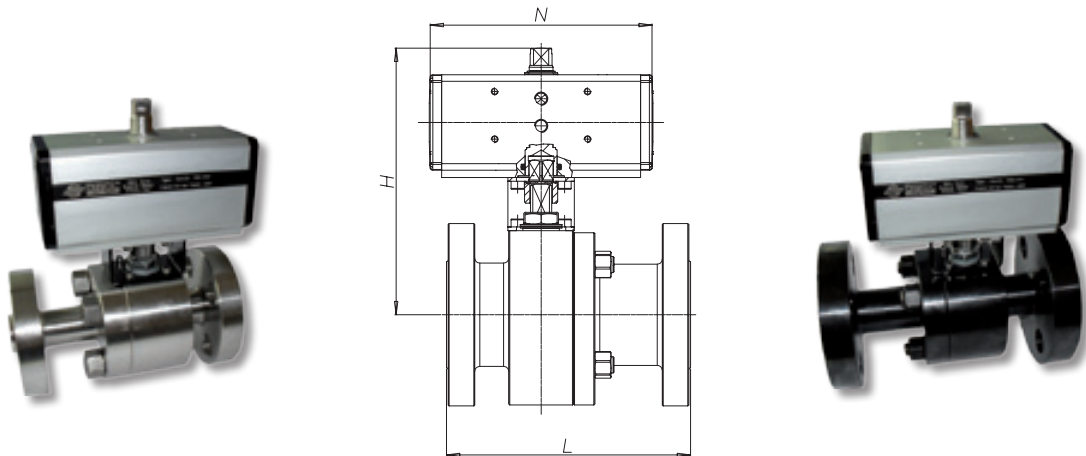
CERTIFICATO API 6D SOLO PER VALVOLE ANSI
API 6D CERTIFICATE ONLY FOR ANSI VALVES



CODICE VALVOLA ASSE NUDO / BARE SHAFT VALVE CODE (V_ _)
CODICE VALVOLA A LEVA / LEVER OPERATED VALVE CODE (L_ _)

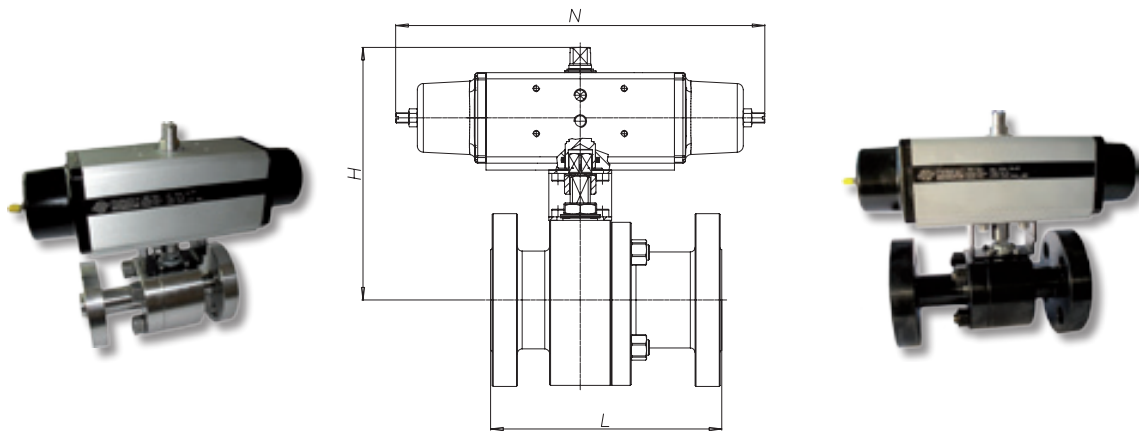
Corpo/Body Stainless Steel	Corpo/body Carbon Steel	MISURA SIZE	PN/ANSI	A	B	C	ATT. ISO	ØM	ØN	f/t	ØG	ØR	F	ØH	N°FORI	ØI	P	Kg	L
L/V472B0604	L/V572A0604	DN15	PN63-100	40	54.5	9.5	F04	42	M5	12/8	105	45	2	75	4	14	20	6.3	165
L/V473BD604	L/V573AD604	DN15	ANSI 600	40	54.5	9.5	F04	42	M5	12/8	95	35	6.3	66.7	4	16	21	5.5	165
L/V472B0605	L/V572A0605	DN20	PN63-100	45	57.5	9.5	F04	42	M5	12/8	130	58	2	90	4	18	22	7.9	190
L/V473BD605	L/V573AD605	DN20	ANSI 600	45	57.5	9.5	F04	42	M5	12/8	115	43	6.3	82.6	4	19	22	6.5	190
L/V472B0606	L/V572A0606	DN25	PN63-100	50	71.5	14.6	F05	50	M6	16/10	140	68	2	100	4	18	24	11.0	216
L/V473BD606	L/V573AD606	DN25	ANSI 600	50	71.5	14.6	F05	50	M6	16/10	125	51	6.3	88.9	4	19	24.3	9.3	216
L/V472B0607	L/V572A0607	DN32	PN63-100	55	76.5	14.6	F05	50	M6	16/10	155	78	2	110	4	22	24	13.7	229
L/V473BD607	L/V573AD607	DN32	ANSI 600	55	76.5	14.6	F05	50	M6	16/10	135	63.5	6.3	98.4	4	19	27.3	12.1	229
L/V472B0608	L/V572A0608	DN40	PN63-100	68	98.5	20.4	F07	70	M8	22/14	170	88	3	125	4	22	26	20.4	241
L/V473BD608	L/V573AD608	DN40	ANSI 600	68	98.5	20.4	F07	70	M8	22/14	155	73	6.3	114.3	4	22	29	18.9	241
L/V472B0609	L/V572A0609	DN50	PN63	74	107.5	20.4	F07	70	M8	22/14	180	102	3	135	4	22	26	25.1	292
L/V473B0609	L/V573A0609	DN50	PN100	74	107.5	20.4	F07	70	M8	22/14	195	102	3	145	4	26	28	27.3	292
L/V473BD609	L/V573AD609	DN50	ANSI 600	74	107.5	20.4	F07	70	M8	22/14	165	92	6.3	127	8	19	32	23.9	292
L/V472B0610	L/V572A0610	DN65	PN63	94	144	25.1	F10	102	M10	30/18	205	122	3	160	8	22	26	44.0	330
L/V473B0610	L/V573A0610	DN65	PN100	94	144	25.1	F10	102	M10	30/18	220	122	3	170	8	26	30	47.0	330
L/V473BD610	L/V573AD610	DN65	ANSI 600	94	144	25.1	F10	102	M10	30/18	190	104.8	6.3	149.2	8	22	36	44.3	330
L/V472B0611	L/V572A0611	DN80	PN63	101.5	151.5	25.1	F10	102	M10	30/18	215	138	3	170	8	22	28	51.9	356
L/V473B0611	L/V573A0611	DN80	PN100	101.5	151.5	25.1	F10	102	M10	30/18	230	138	3	180	8	26	32	55.3	356
L/V473BD611	L/V573AD611	DN80	ANSI 600	101.5	151.5	25.1	F10	102	M10	30/18	210	127	6.3	168.3	8	22	39	54.0	356
L/V472B0612	L/V572A0612	DN100	PN63	126	196.5	40.5	F14	140	M16	45/30	250	162	3	200	8	26	30	102	432
L/V473B0612	L/V573A0612	DN100	PN100	126	196.5	40.5	F14	140	M16	45/30	250	162	3	210	8	30	36	106	432
L/V473BD612	L/V573AD612	DN100	ANSI 600	126	196.5	40.5	F14	140	M16	45/30	275	157.2	6.3	215.9	8	25.5	45	113	432

ATTUATORE PNEUMATICO DOPPIO EFFETTO <i>DOUBLE ACTING PNEUMATIC ACTUATOR</i>									PN 63-100
CORPO/BODY STAINLESS STEEL	CORPO/BODY CARBON STEEL	ATTUATORE actuator	KIT di montaggio connecting kit	MISURA size	PN	N	H	Kg	L
D472BH064	D572AH064	DA030401S	KCF034354	DN15	PN63-100	130	155	7.3	165
D472BH065	D572AH065	DA045401S	KCF044357	DN20	PN63-100	144	165	9.2	190
D472BH066	D572AH066	DA060402S	KCF044358	DN25	PN63-100	152	190	12.6	216
D472BH067	D572AH067	DA060402S	KCF044358	DN32	PN63-100	152	195	15.3	229
D472BH068	D572AH068	DA090401S	KCF054360	DN40	PN63-100	169	215	22.3	241
D472BH069	D572AH069	DA120401S	KCF054361	DN50	PN63	184	255	27.9	292
D473BH069	D573AH069	DA120401S	KCF054361	DN50	PN100	184	255	30.1	292
D472BH070	D572AH070	DA240401S	KCF074365	DN65	PN63	242	290	49.3	330
D473BH070	D573AH070	DA240401S	KCF074365	DN65	PN100	242	290	52.3	330
D472BH071	D572AH071	DA360401S	KCF103887	DN80	PN63	264	310	59.1	356
D473BH071	D573AH071	DA360401S	KCF103887	DN80	PN100	264	310	62.5	356
D472BH072	D572AH072	DA720401S	KCF124369	DN100	PN63	329.5	380	114	432
D473BH072	D573AH072	DA720401S	KCF124369	DN100	PN100	329.5	380	118	432



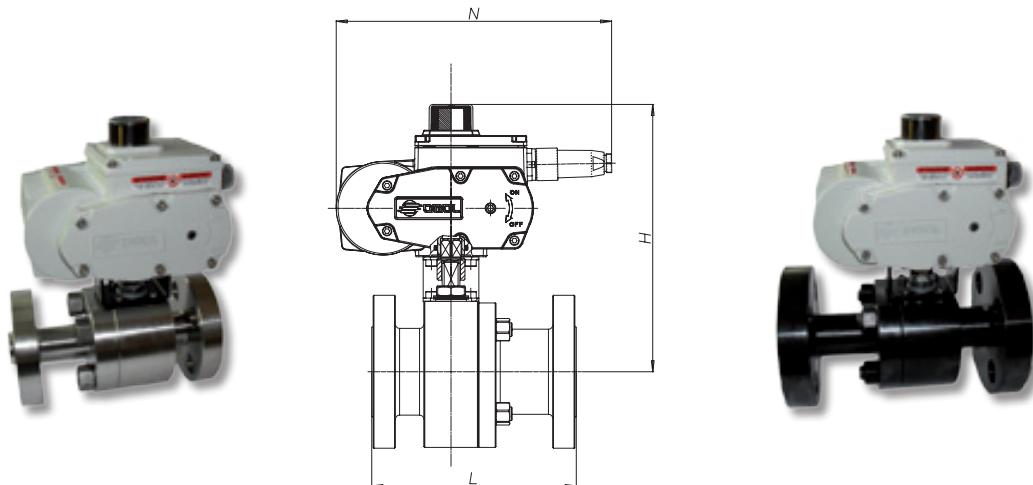
ATTUATORE PNEUMATICO DOPPIO EFFETTO <i>DOUBLE ACTING PNEUMATIC ACTUATOR</i>									ANSI 600
CORPO/BODY STAINLESS STEEL	CORPO/BODY CARBON STEEL	ATTUATORE actuator	KIT di montaggio connecting kit	MISURA size	ANSI	N	H	Kg	L
D473BHD64	D573AHD64	DA030401S	KCF034354	DN15	ANSI 600	130	155	6.5	165
D473BHD65	D573AHD65	DA045401S	KCF044357	DN20	ANSI 600	144	165	7.8	190
D473BHD66	D573AHD66	DA060402S	KCF044358	DN25	ANSI 600	152	190	10.9	216
D473BHD67	D573AHD67	DA060402S	KCF044358	DN32	ANSI 600	152	195	13.7	229
D473BHD68	D573AHD68	DA090401S	KCF054360	DN40	ANSI 600	169	215	20.8	241
D473BHD69	D573AHD69	DA120401S	KCF054361	DN50	ANSI 600	184	255	26.7	292
D473BHD70	D573AHD70	DA240401S	KCF074365	DN65	ANSI 600	242	290	49.6	330
D473BHD71	D573AHD71	DA360401S	KCF103887	DN80	ANSI 600	264	310	61.2	356
D473BHD72	D573AHD72	DA720401S	KCF144370	DN100	ANSI 600	329.5	380	125	432

ATTUATORE PNEUMATICO SEMPLICE EFFETTO <i>SPRING RETURN PNEUMATIC ACTUATOR</i> PN 63-100									
CORPO/BODY STAINLESS STEEL	CORPO/BODY CARBON STEEL	ATTUATORE actuator	KIT di montaggio connecting kit	MISURA size	PN	N	H	Kg	L
S472BH064	S572AH064	SR030402S	KCF044313	DN15	PN63-100	240	165	8.3	165
S472BH065	S572AH065	SR045401S	KCF054356	DN20	PN63-100	294	175	10.3	190
S472BH066	S572AH066	SR060401S	KCF054359	DN25	PN63-100	320	210	14.5	216
S472BH067	S572AH067	SR060401S	KCF054359	DN32	PN63-100	320	220	17.2	229
S472BH068	S572AH068	SR090401S	KCF074315	DN40	PN63-100	357	240	25	241
S472BH069	S572AH069	SR120401S	KCF074362	DN50	PN 63	372	285	31.8	292
S473BH069	S573AH069	SR120401S	KCF074362	DN50	PN 100	372	285	34	292
S472BH070	S572AH070	SR240401S	KCF103887	DN65	PN 63	460	315	55	330
S473BH070	S573AH070	SR240401S	KCF103887	DN65	PN 100	460	315	58	330
S472BH071	S572AH071	SR360401S	KCF123893	DN80	PN 63	566	350	67.8	356
S473BH071	S573AH071	SR360401S	KCF123893	DN80	PN 100	566	350	71.2	356
S472BH072	S572AH072	SR720401S	KCF144370	DN100	PN 63	712	465	129	432
S473BH072	S573AH072	SR720401S	KCF144370	DN100	PN 100	712	465	133	432

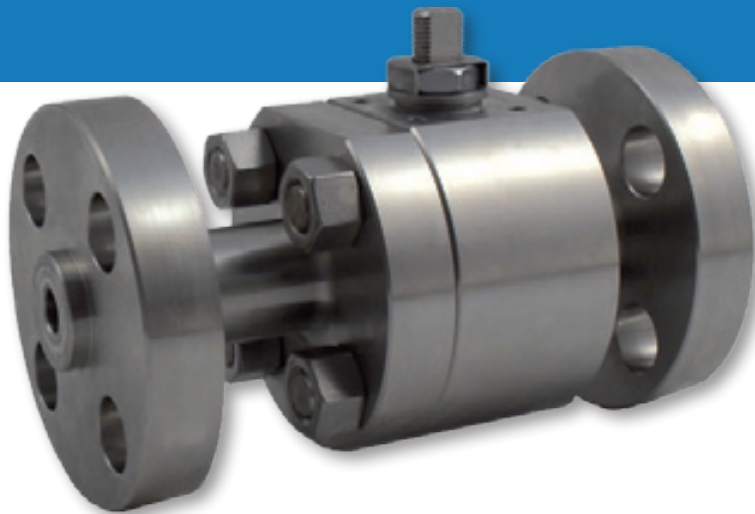


ATTUATORE PNEUMATICO SEMPLICE EFFETTO <i>SPRING RETURN PNEUMATIC ACTUATOR</i> ANSI 600									
CORPO/BODY STAINLESS STEEL	CORPO/BODY CARBON STEEL	ATTUATORE actuator	KIT di montaggio connecting kit	MISURA size	ANSI	N	H	Kg	L
S473BHD064	S573AHD64	SR030402S	KCF044313	DN15	ANSI 600	240	165	7.5	165
S473BHD065	S573AHD65	SR045401S	KCF054356	DN20	ANSI 600	294	175	8.9	190
S473BHD066	S573AHD66	SR060401S	KCF054359	DN25	ANSI 600	320	210	12.8	216
S473BHD067	S573AHD67	SR060401S	KCF054359	DN32	ANSI 600	320	220	15.6	229
S473BHD068	S573AHD68	SR090401S	KCF074315	DN40	ANSI 600	357	240	23.5	241
S473BHD069	S573AHD69	SR120401S	KCF074362	DN50	ANSI 600	372	285	30.6	292
S473BHD070	S573AHD70	SR240401S	KCF103887	DN65	ANSI 600	460	315	55.3	330
S473BHD071	S573AHD71	SR360401S	KCF123893	DN80	ANSI 600	566	350	70	356
S473BHD072	S573AHD72	SR720401S	KCF144370	DN100	ANSI 600	712	465	140	432

ATTUATORE ELETTRICO ON-OFF ELECTRICAL ON-OFF ACTUATOR						PN 63-100			
CORPO/BODY STAINLESS STEEL	CORPO/BODY CARBON STEEL	ATTUATORE actuator	KIT di montaggio connecting kit	MISURA size	PN	N	H	Kg	L
C472BA5E064	C572AA5E064	EA0035A5C000	KCF054355	DN15	PN63-100	250	217	9.9	165
C472BA5E065	C572AA5E065	EA0035A5C000	KCF054356	DN20	PN63-100	250	222	11.5	190
C472BA5G066	C572AA5G066	EA0070A5C000	KCF054359	DN25	PN63-100	250	227	14.8	216
C472BA5G067	C572AA5G067	EA0070A5C000	KCF054359	DN32	PN63-100	250	232	17.5	229
C472BA5I068	C572AA5I068	EA0130A5C000	KCF074315	DN40	PN63-100	280	276	27.6	241
C472BA5I069	C572AA5I069	EA0130A5C000	KCF074362	DN50	PN 63	280	287	32.3	292
C473BA5I069	C573AA5I069	EA0130A5C000	KCF074362	DN50	PN 100	280	287	34.5	292
C472BA5K070	C572AA5K070	EA0240A5C000	KCF103887	DN65	PN 63	280	312	51.5	330
C473BA5K070	C573AA5K070	EA0240A5C000	KCF103887	DN65	PN 100	280	312	54.5	330
E472B16N071	C572A16N071	AE160040	KCE363897	DN80	PN 63	256.5	290	60.9	356
E473B16N071	C573A16N071	AE160040	KCE363897	DN80	PN 100	256.5	290	64.3	356
E472B16T072	E572A16T072	AE160100	KCE564371	DN100	PN 63	381	315	124	432
E473B16TC72	E573A16T072	AE160100	KCE564371	DN100	PN 100	381	315	128	432



ATTUATORE ELETTRICO ON-OFF ELECTRICAL ON-OFF ACTUATOR						ANSI 600			
CORPO/BODY STAINLESS STEEL	CORPO/BODY CARBON STEEL	ATTUATORE actuator	KIT di montaggio connecting kit	MISURA size	ANSI	N	H	Kg	L
C473BA5ED64	C573AA5ED64	EA0035A5C000	KCF054355	DN15	ANSI 600	250	217	9.1	165
C473BA5ED65	C573AA5ED65	EA0035A5C000	KCF054356	DN20	ANSI 600	250	222	10.1	190
C473BA5GD66	C573AA5GD66	EA0070A5C000	KCF054359	DN25	ANSI 600	250	227	13.1	216
C473BA5GD67	C573AA5GD67	EA0070A5C000	KCF054359	DN32	ANSI 600	250	232	15.9	229
C473BA5ID68	C573AA5ID68	EA0130A5C000	KCF074315	DN40	ANSI 600	280	276	26.1	241
C473BA5ID69	C573AA5ID69	EA0130A5C000	KCF074362	DN50	ANSI 600	280	287	31.1	292
C473BA5KD70	C573AA5KD70	EA0240A5C000	KCF103887	DN65	ANSI 600	280	312	51.8	330
E473B16ND71	E573A16ND71	AE160040	KCE363897	DN80	ANSI 600	256.5	290	63	356
E473B16TD72	E573A16TD72	AE160100	KCE564371	DN100	ANSI 600	381	315	135	342



ESECUZIONE STANDARD

Sfera flottante, passaggio totale
 Tenuta soft-seat: DEVLON
 Norme per flange d'attacco ANSI B16.5
 Temperature di utilizzo vedi diagramma pressione temperatura
 Classe di pressione: ANSI 900-1500
 Fluido intercettato: aria, acqua, gas, prodotti petroliferi e petrolchimici, fluidi aggressivi.
 Antistatic device EN12662-2
 Tenuta stelo: pacco a V di serie in TFM 1600
 Tenuta addizionale su stelo con O-ring FKM
 Stelo anti Blow-out
 Foratura piano per attuatore a norma ISO 5211
 Angolo di chiusura >7°

ESECUZIONI SPECIALI A RICHIESTA

Per altri tipi di flangiature contattare il nostro ufficio commerciale
 Guarnizioni di tenuta in: PTFE caricato vetro (RPTFE-GF), PTFE caricato carbografite (RPTFE-CF). Per altri tipi di materiale contattare il nostro ufficio commerciale.
 Tenuta integrale avvolgente in PTFE
 Esecuzione monodirezionale con foro di compensazione della pressione nella sfera
 Leva inox
 Dadi e molle stelo inox
 Per esecuzioni speciali con materiali (corpo/sfera/stelo) diversi dallo standard contattare il nostro ufficio commerciale

CERTIFICAZIONI

Conforme alla direttiva Europea 97/23 EC PED
 Conforme alla direttiva ATEX 94/9/CE
 TA-LUFT VDI 2440 (2000)
 FIRE SAFE DESIGN
API 6D: certificato n° 6D-1007

NORME DI PROGETTAZIONE

API 6D
 Spessori corpo in accordo a: ASME B16.34, ASME VIII div.1, EN 12516.
 Materiali e rating in accordo ad ASME B16.34 per valvole ANSI ed EN 12516 per valvole PN

STANDARD FEATURES

Floating ball, full bore
 Soft-seat seal: DEVLON
 Standard for connecting flanges: ANSI B16.5
 Operating temperature see temperature pressure diagram
 Pressure class: ANSI 900-1500
 Intercepted fluid: air, water, gas, petroleum and petrochemical products, aggressive fluids
 Antistatic device EN12662-2
 Stem seal: TFM 1600 V-pack
 Additional seal on stem with FKM O-ring
 Anti Blow-out stem
 Actuator connection as per standard ISO 5211
 Closing angle >7°

SPECIAL FEATURES ON REQUEST

For other flange types please contact our sales department
 Sealing in: PTFE reinforced with glass (RPTFE-GF), PTFE reinforced with carbon-graphite (RPTFE-CF). For other types of materials please contact our sales department.
 PTFE cavity filled seat
 Mono-directional version with pressure-compensating hole in the ball
 Stainless steel lever
 Stainless steel Stem nuts and springs
 For special versions in materials different from the standard (body, ball, stem), please contact our sales department.

CERTIFICATIONS

In compliance with European Directive 97/23 EC PED
 In compliance with ATEX 94/9/CE Directive
 TA-LUFT VDI 2440 (2000)
 FIRE SAFE DESIGN
API 6D: certificate n° 6D-1007

ENGINEERING STANDARDS

API 6D
 Body thickness in compliance with: ASME B16.34, ASME VIII div.1, EN 12516.
 Materials and rating in compliance with ASME B16.34



SPLIT BODY IN ACCIAIO AL CARBONIO ANSI 900-1500 CARBON STEEL SPLIT BODY ANSI 900-1500



ESECUZIONE STANDARD

Sfera flottante, passaggio totale
Tenuta soft-seat: DEVLON
Norme per flange d'attacco ANSI B16.5
Scartamento: ANSI B16.10
Temperature di utilizzo vedi diagramma pressione temperatura
Classe di pressione: ANSI 900-1500
Fluido intercettato: aria, acqua, gas, prodotti petroliferi e petrolchimici.
Antistatic device EN12662-2
Tenuta stelo: pacco a V di serie in TFM 1600
Tenuta addizionale su stelo con O-ring FKM
Stelo anti Blow-out
Foratura piano per attuatore a norma ISO 5211
Angolo di chiusura >7°
Trattamento superficiale brunitura

ESECUZIONI A RICHIESTA

Esecuzione per temperatura -40 C° in LF2, per altri tipi di flangiate contattare il nostro ufficio commerciale
Guarnizioni di tenuta in: PTFE caricato vetro (RPTFE-GF), PTFE caricato carbografite (RPTFE-CF). Per altri tipi di materiale contattare il nostro ufficio commerciale
Tenuta integrale avvolgente in PTFE
Esecuzione monodirezionale con foro di compensazione della pressione nella sfera
Leva inox
Dadi e molle stelo inox
Per esecuzioni speciali con materiali (corpo/sfera/stelo) diversi dallo standard contattare il nostro ufficio commerciale
Trattamento superficiale: zincatura bianca, verniciatura epossidica, (per altri trattamenti contattare il nostro ufficio commerciale).

CERTIFICAZIONI

Conforme alla direttiva Europea 97/23 EC PED
Conforme alla direttiva ATEX 94/9/CE
TA-LUFT VDI 2440 (2000)
FIRE SAFE DESIGN
API 6D: certificato n° 6D-1007

NORME DI PROGETTAZIONE

API 6D
Spessori corpo in accordo a: ASME B16.34, ASME VIII div.1, EN 12516.
Materiali e rating in accordo ad ASME B16.34

STANDARD FEATURES

Floating ball, full bore
Soft-seat seal: DEVLON
Standard for connecting flanges: ANSI B16.5
Operating temperature see temperature pressure diagram
Pressure class: ANSI 900-1500
Intercepted fluid: air, water, gas, petroleum and petrochemical products.
Antistatic device EN12662-2
Stem seal: TFM 1600 V-pack
Additional seal on stem with FKM O-ring
Anti Blow-out stem
Actuator connection as per standard ISO 5211
Closing angle >7°
Superficial treatment: blueing

SPECIAL FEATURES ON REQUEST

LF2 carbon steel for low temperature execution (-40 C°)
For other flange types please contact our sales department
Sealing in: PTFE reinforced with glass (RPTFE-GF), PTFE reinforced with carbon-graphite (RPTFE-CF). For other types of materials please contact our sales department
Cavity filled seat in PTFE
Mono-directional version with pressure-compensating hole in the ball
Stainless steel lever
For special versions in materials different from the standard (body, ball, stem), please contact our sales department.
Stainless steel Stem nuts and springs
Superficial treatment: white zinc coating, epoxy coating
For other coating please contact our sales department

CERTIFICATIONS

In compliance with European Directive 97/23 EC PED
In compliance with ATEX 94/9/CE Directive
TA-LUFT VDI 2440 (2000)
FIRE SAFE DESIGN
API 6D: certificate n° 6D-1007

ENGINEERING STANDARDS

API 6D
Body thickness in compliance with: ASME B16.34, ASME VIII div.1, EN 12516.
Materials and rating in compliance with ASME B16.34

DIAGRAMMA PRESSIONE TEMPERATURA PER VALVOLE CON CORPO IN ACCIAIO INOX TEMPERATURE PRESSURE DIAGRAM FOR STAINLESS STEEL VALVES

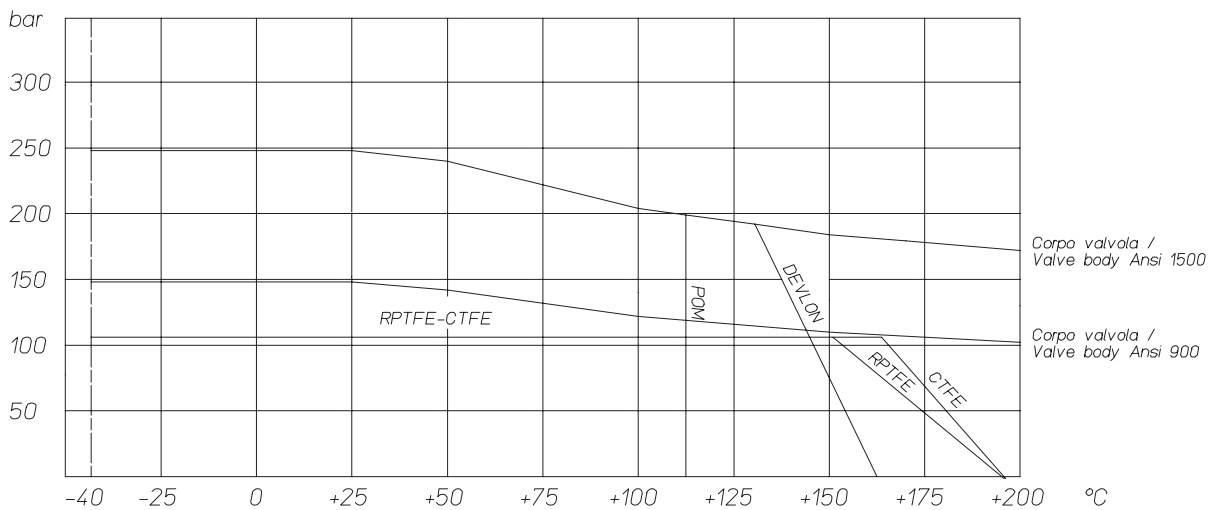
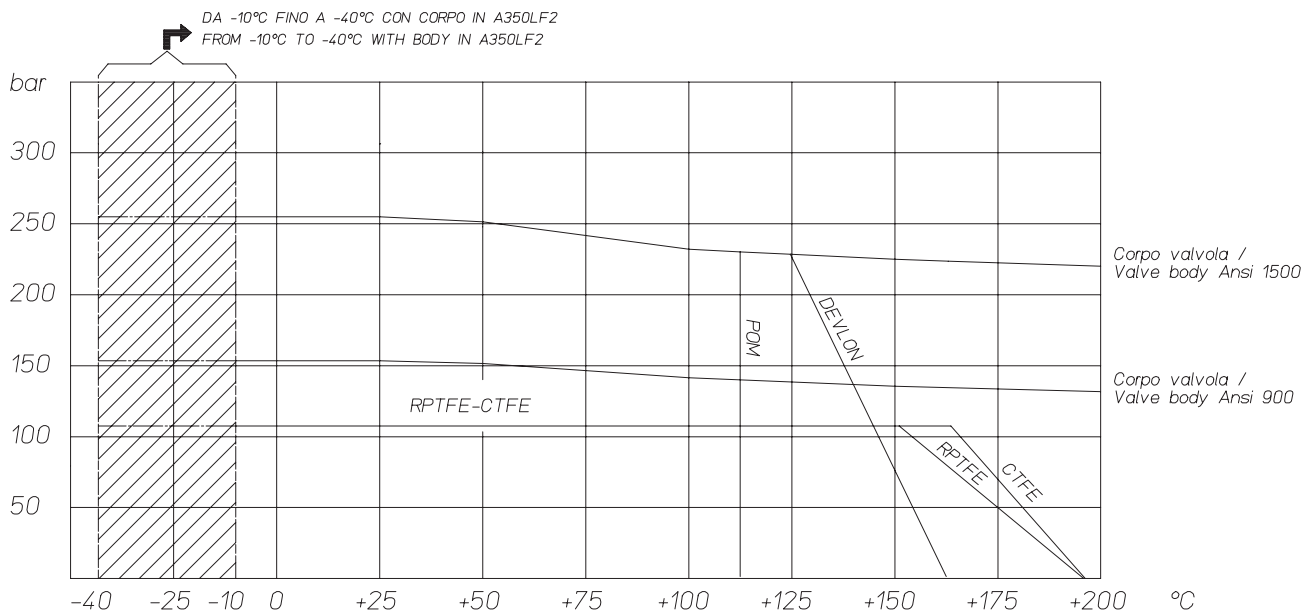


DIAGRAMMA PRESSIONE TEMPERATURA PER VALVOLE CON CORPO IN ACCIAIO AL CARBONIO TEMPERATURE PRESSURE DIAGRAM FOR CARBON STEEL VALVES



COPPIE DI SPUNTO CON SEGGIO IN DEVLON E CON FLUIDO INTERCETTATO ACQUA (*)
BREAK AWAY TORQUES WITH DEVLON SEATS AND WITH WATER (*)

	DN 15	DN 20	DN 25
0 bar	15	18	20
100 bar	20	23	26
150 bar	25	30	40
250 bar	30	40	60

* Qualora si intercettino fluidi sgrassanti e/o contenenti particolato solido le coppie di manovra possono risultare maggiorate rispetto a quanto riportato in tabella.

* Qualora si intercettino fluidi sgrassanti e/o contenenti particolato solido le coppie di manovra possono risultare maggiorate rispetto a quanto riportato in tabella.

I valori della coppia in Nm possono variare in funzione della temperatura del fluido. Considerare un fattore di sicurezza pari a 1,4. Con frequenti cicli di apertura e chiusura, la coppia di manovra può diminuire sensibilmente rispetto a quella iniziale.

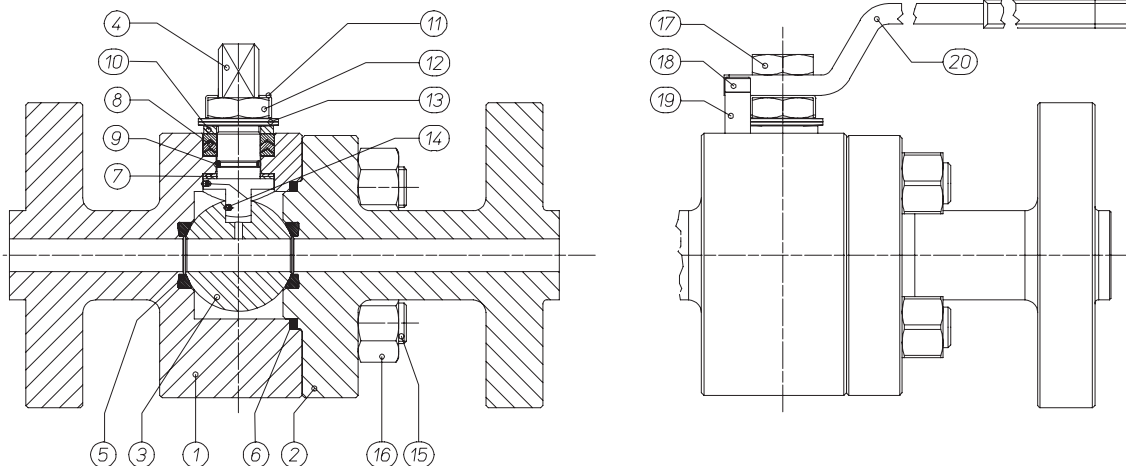
Torque can vary depending on temperature and type of fluid, a safety factor 1,4 must be applied. Torque can drop on high frequency of operation.

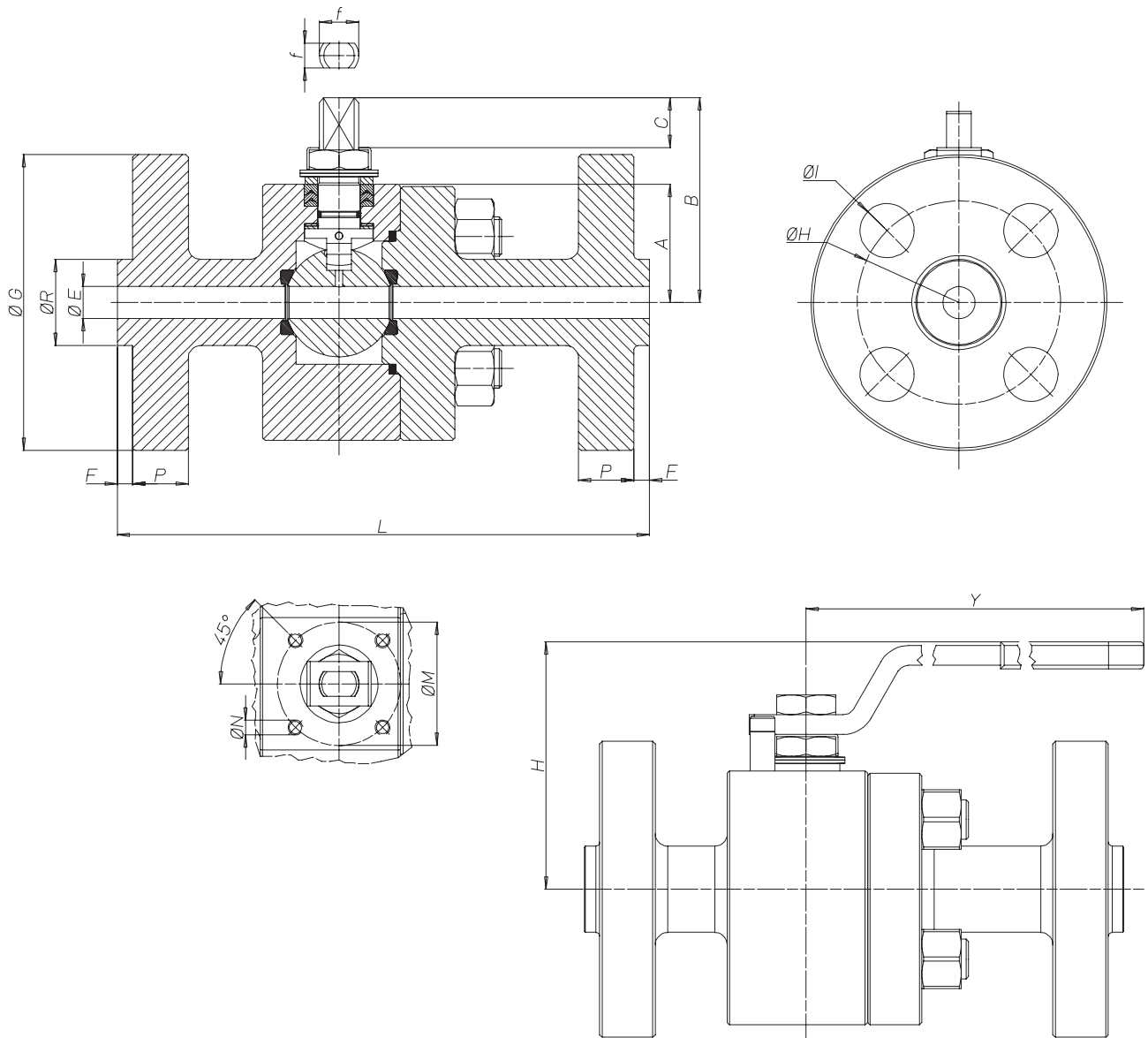
Il dimensionamento degli attuatori pneumatici è stato fatto considerando una pressione minima di alimentazione pari a 5,6 barg. The sizing of pneumatic actuators has been done considering a minimum supply pressure of 5,6 barg.

MATERIALI / MATERIALS	Corpo in acciaio inox Stainless steel body	Corpo in acciaio carbonio Carbon steel body
DESCRIZIONE / DESCRIPTION	V469	V569
1 Corpo / body	ASTM A182 F316 / A479 TP.316 (x) (1,4401 / X5CrNiMo17-12-2)	ASTM A 105 (*)
2 Terminale/ connector	ASTM A182 F316 / A479 TP.316 (x) (1,4401 / X5CrNiMo17-12-2)	ASTM A 105 (*)
3 Sfera / ball	ASTM A351 CF8M (1) (1,4408 / GX5CrNiMo19-12-2)	ASTM A351 CF8M (1) (1,4408 / GX5CrNiMo19-12-2)
4 Stelo / stem	ASTM A182 F316/A479 TP.316/A564-TP.630 (17-4 PH) (1,4401/X5CrNiMo17-12-2) /	ASTM A182 F316/A479 TP.316/A564-TP.630 (17-4 PH) (1,4401/X5CrNiMo17-12-2)
5 Sedi / seats	DEVLON	DEVLON
6 Guarnizione corpo terminale / body connector gasket	GRAFOIL	GRAFOIL
7 Tenuta inferiore / bottom sealing	TFM 1600	TFM 1600
8 Pacco a "V" / chevron rings	TFM 1600	TFM 1600
9 O-Ring Stelo / stem o'ring	FKM	FKM
10 Anello premiguarnizione/gland nut ring	ASTM A182 F304 / A479 TP.304 (1,4301 / X5CrNi18-10)	Acciaio al carbonio zincato Zinc coated carbon steel (x)
11 Piastra bloccadado / nut holder	AISI 304	AISI 304
12 Dado Stelo / stem nut (x)	UNI 3740-1 6S ZINCATO-galvanized (x)	UNI 3740-1 6S ZINCATO-galvanized (x)
13 Molle a tazza / spring washer (xx)	50CrV4 ZINCATO-galvanized (xx)	50CrV4 ZINCATO-galvanized (xx)
14 Dispositivo antistatico / antistatic device	ASTM A182 F316 / A479 TP.316	ASTM A182 F316 / A479 TP.316
15 Tiranti / stud bolt	A193-B7	A193-B8
16 Dadi / nut	A194-2H	A194-Gr.8
17 Controdado / lock nut (x)	UNI 3740-1 6S ZINCATO-GALVANIZED (x)	UNI 3740-1 6S ZINCATO-GALVANIZED (x)
18 Vite di fermo / Holder screw	A2 UNI EN ISO 3506-1	A2 UNI EN ISO 3506-1
19 Fermo di posizione / holder	Acciaio al carbonio zincato-Zinc coated carbon steel	Acciaio al carbonio zincato-Zinc coated carbon steel
20 Leva / lever (x)	Fe 37 ZINCATO - GALVANIZED (x)	Fe 37 ZINCATO - GALVANIZED (x)

A RICHIESTA DISPONIBILE IN: AVAILABLE ON REQUEST:

(*) A350LF2

(x) 304 s.s.
(xx) 301 s.s.(1): PER DN15 A182-F316 / A479-Tp.316
for DN15 A182-F316 / A479-Tp.316



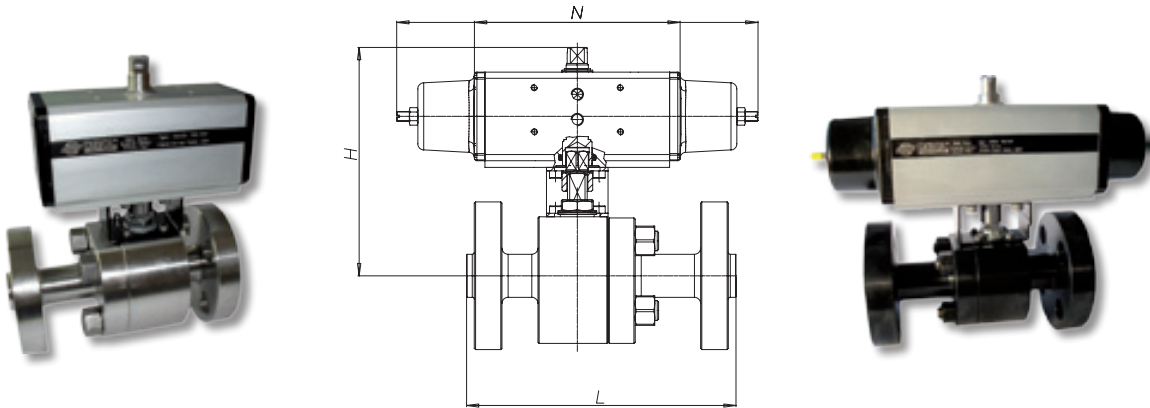
MISURA SIZE	ØE	L	A	B	C	ATT. ISO	ØM	ØN	f/t	H	Y
DN15	13	216	48	113,5	14,6	F05	50	M6	16/10	100	275
DN20	19	229	48	113,5	14,6	F05	50	M6	16/10	100	275
DN25	25	254	48	113,5	14,6	F05	50	M6	16/10	100	275

CODICE VALVOLA ASSE NUDO / VALVE CODE BARE SHAFT: V...
CODICE VALVOLA A LEVA / VALVE CODE WITH LEVER: L...

Corpo/Body Stainless steel	Corpo/Body Carbon steel	MISURA	PN / ANSI	A	ØG	ØR	F	ØH	N° FORI	ØI	P	Kg	L
L/V469BD604	L/V569AD604	DN15	ANSI 900	48	120	35	6,3	82,5	4	22	22,5	9,7	216
L/V469BD605	L/V569AD605	DN20	ANSI 900	48	130	43	6,3	89	4	22	25,5	11,7	229
L/V469BD606	L/V569AD606	DN25	ANSI 900	48	149,2	51	6,3	101,6	4	25,4	28,7	13,9	254

ANSI 900-1500**ATTUATORE PNEUMATICO DOPPIO E SEMPLICE EFFETTO** *DOUBLE AND SIMPLE ACTING PNEUMATIC ACTUATOR*

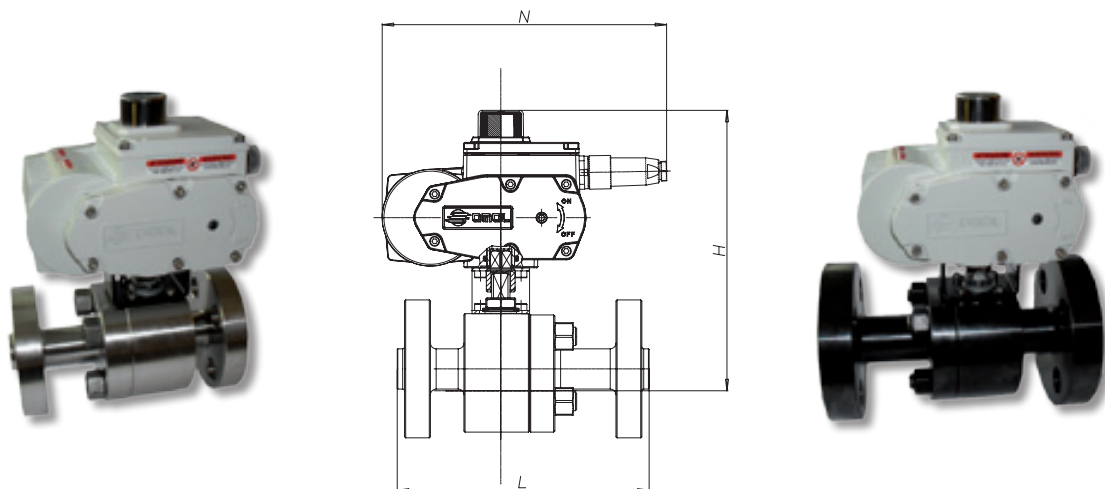
CORPO/BODY STAINLESS STEEL	CORPO/BODY CARBON STEEL	ATTUATORE actuator	KIT di montaggio connecting kit	MISURA size	ANSI	N	H	Kg	L
D469BD64	D569AD64	DA045402S	KCF044226	DN15	ANSI 900-1500	144	147	11,0	216
S469BD64	S569AD64	SR045401S	KCF054009	DN15	ANSI 900-1500	294	185,5	12,1	216
D469BD65	D569AD65	DA060402S	KCF044226	DN20	ANSI 900-1500	152	178	13,2	229
S469BD65	S569AD65	SR060401S	KCF054009	DN20	ANSI 900-1500	320	204,4	15,1	229
D469BD66	D569AD66	DA090401S	KCF054009	DN25	ANSI 900-1500	169	178	15,6	254
S469BD66	S569AD66	SR090401S	KCF074227	DN25	ANSI 900-1500	357	214	18,5	254



ESECUZIONE DA BARRA
EXECUTION FROM SOLID BAR

ATTUATORE ELETTRICO ON-OFF *ELECTRIC ACTUATOR ON-OFF***ANSI 900-1500**

CORPO/BODY STAINLESS STEEL	CORPO/BODY CARBON STEEL	ATTUATORE actuator	KIT di montaggio connecting kit	MISURA size	ANSI	N	H	Kg	L
C469BA5GD64	C569AA5GD64	EA0070A5C000	KCF054009	DN15	ANSI 900-1500	250	225	13,5	216
C469BA5GD65	C569AA5GD65	EA0070A5C000	KCF054009	DN20	ANSI 900-1500	250	225	15,5	229
C469BA5GD66	C569AA5GD66	EA0070A5C000	KCF054009	DN25	ANSI 900-1500	250	225	17,7	254



ESECUZIONE DA BARRA
EXECUTION FROM SOLID BAR