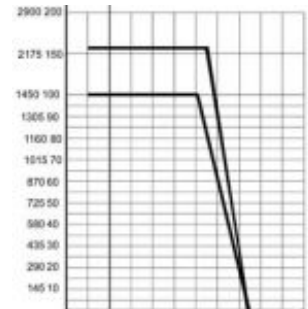


658030



Rubinetto a SPILLO

Organo di comando: Volantino

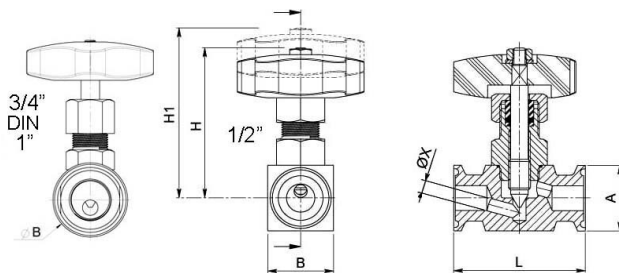
Attacco: CLAMP normativa DIN 32676 TAB.4 REIHE C e TAB.2 REIHE A Materiale: Aisi 316L

Misure: 1/2" e 1"

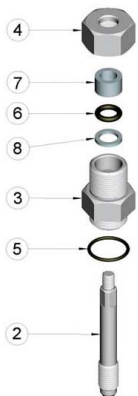
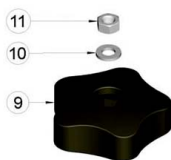
Temperatura di esercizio: -20°C +160°C

Finitura esterna: Lucida

A richiesta: Sistema antistatico ATEX II 2 G-D T4 Attacco Filettato Iso 228 femmina



CLAMP	Ø A	L	B	H	H 1	Ø X	PN	Kg	CODICE AISI 316L
1/2"	25	52	25	70	78	5	160	0,300	658030 61100 <u>3D</u>
3/4"	25	70	Ø 35	67	80	6	100	0,430	658030 61500 <u>3D</u>
DIN	34	70	Ø 35	67	80	6	100	0,478	658030 61910
1"	50.5	90	Ø 52	104	119	10	100	1.230	658030 62300 <u>3D</u>



Pos.	Denominazione	P.zi	Mat.
1	Corpo	1	AISI 316L
2	Spillo	1	AISI 316L
3	Vitone	1	AISI 316L
4	Dado premistoppa	1	AISI 316L
5	OR	1	FKM
6	OR	1	FKM
7	Guarnizione	1	PTFE Caricato Vetro/With glass
8	Guarnizione	1	PTFE
9	Volantino	1	Duroplast
10	Rondella	1	AISI 304L
11	Dado	1	AISI 304L