

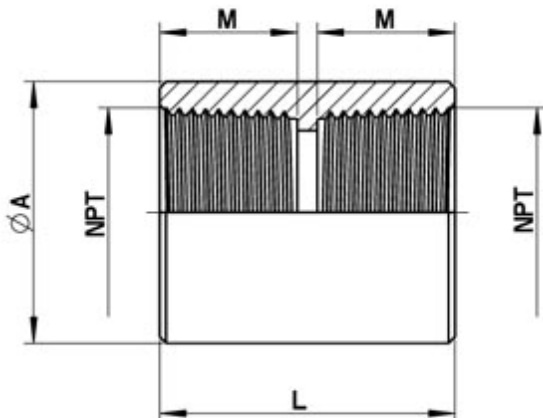
744102



MANICOTTO NPT FEMMINA + NPT FEMMINA

Materiale: Aisi 316L (1.4404)

Categorie: NPT FEMMINA, Raccorderia



| NPT | Ø A x Th | M | L | Kg. | CODICE AISI 316L |
|-------------|----------|----|----|-------|------------------|
| 1/8" x 1/8" | 18 | 8 | 25 | 0,035 | 744102 60300 |
| 1/4" x 1/4" | 22 | 15 | 32 | 0.067 | 744102 60600 |

| NPT | Ø A x Th | M | L | Kg. | CODICE AISI 316L |
|---------------|----------|----|----|-------|------------------|
| 3/8" x 3/8" | 25 | 17 | 36 | 0.095 | 744102 61100 |
| 1/2" x 1/2" | 30 | 21 | 45 | 0.163 | 744102 61700 |
| 3/4" x 3/4" | 40 | 21 | 45 | 0.295 | 744102 62900 |
| 1" x 1" | 40 | 21 | 45 | 0.208 | 744102 64100 |
| 1"1/4 x 1"1/4 | 50 | 20 | 50 | 0.318 | 744102 64800 |
| 1"1/2 x 1"1/2 | 60 | 25 | 60 | 0.600 | 744102 65800 |
| 2" x 2" | 75 | 25 | 60 | 0.930 | 744102 66800 |
| 2"1/2 x 2"1/2 | 90 | 28 | 60 | 1,32 | 744102 67700 |
| 3" x 3" | 100 | 28 | 70 | 1,36 | 744102 68500 |