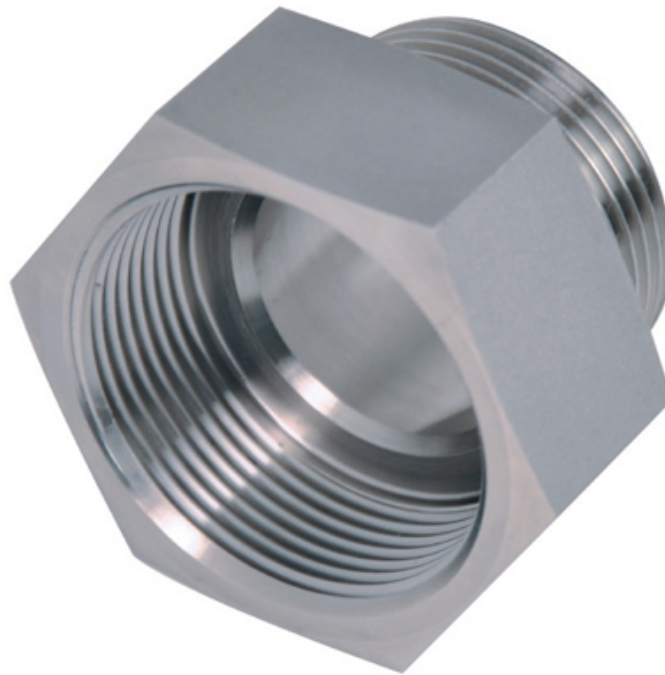


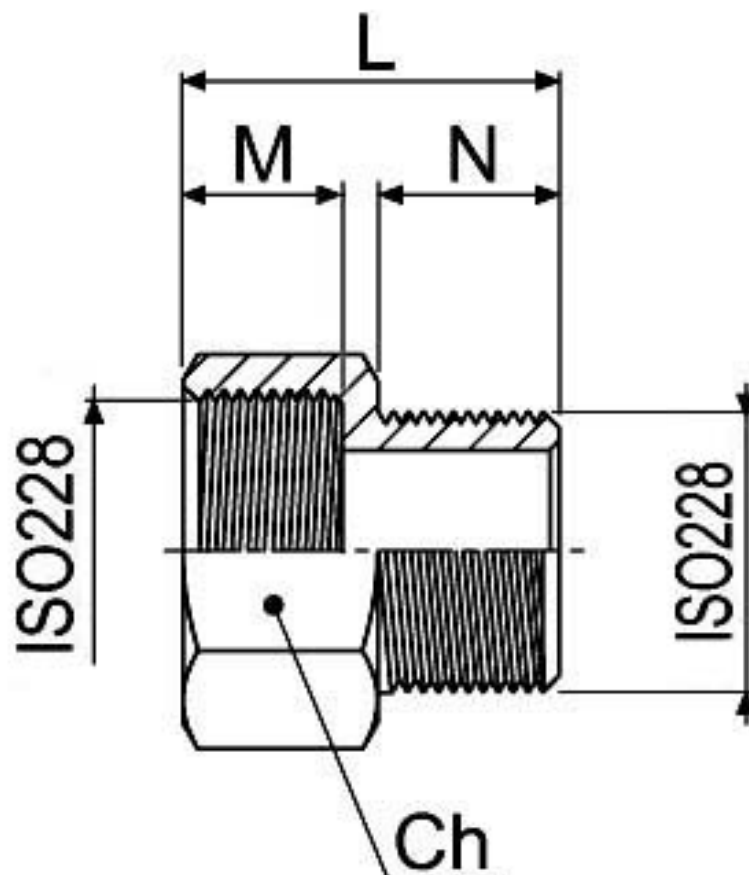
767016



FEMMINA PER RIDUZIONE MASCHIO ISO228 GAS CILINDRICO

Materiale: AISI 304L (1.4307) – AISI 316L (1.4404)

Categorie: ISO 228 M/F, Raccorderia



ISO 228 F/M	M	N	Ch	L	Kg	CODICE AISI 316L
1/4" x 1/8"	13	9	19	25	0.030	767016 60200
3/8" x 1/8"	14	9	22	26	0,037	767016 60600
3/8" x 1/4"	14	11	22	28	0.041	767016 60700
1/2" x 1/8"	15	9	27	27	0,056	767016 61200
1/2" x 1/4"	15	11	27	29	0.058	767016 61300
1/2" x 3/8"	15	13	27	31	0.062	767016 61400
3/4" x 1/2"	17	15	32	35	0.089	767016 61900
1" x 1/2"	20	17	36	42	0.110	767016 62400
1" x 3/4"	20	18	36	43	0.119	767016 62600
1"1/4 x 1/2"	20	17	46	42	0.180	767016 63000
1"1/4 x 1"	20	19	46	44	0.201	767016 63200
1" 1/2 x 1/2"	20	17	55	42	0,27	767016 63700
1" 1/2 x 1"	20	19	55	44	0,288	767016 63900
2" x 1/2"	22	15	66	44	0,42	767016 64500
2" x 1"	22	17	66	46	0,432	767016 64700
2" x 1" 1/4	22	19	66	46	0,39	767016 64800
2" x 1"1/2	22	20	66	46	0.368	767016 64900
3" x 2"1/2	24	25	95	55	0.810	767016 67000
4" x 3"	32	30	125	70	1,8	767016 68200
5" x 4"	37	35	150	80	2,6	767016 69600