

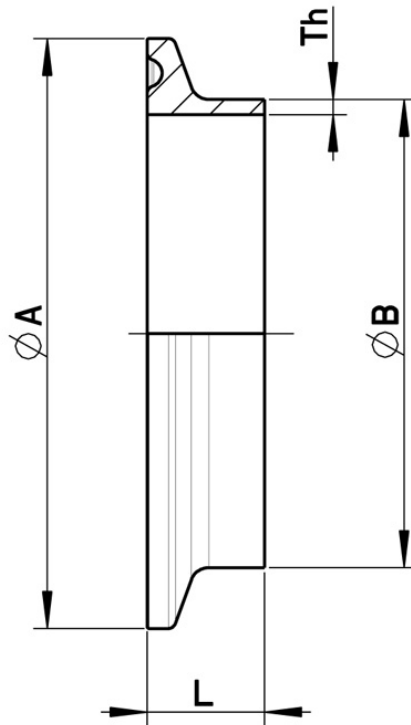


768062 SHORT FOR BS PIPE

CLAMP smooth shank to BUTT WELDING DIN 32676 TABLE 4 REIHE C

According to normative BS/OD ASTM A270 for tube

Material: Aisi 316L (1.4404)



SIZE INCH	Ø A	Ø B x Th	L	Kg	CODE AISI 316L
1/4"	25	6,35 x 1	12,7	-	768062 60100
3/8"	25	9,53 x 1	12,7	-	768062 60500
1/2"	25	12,7 x 1,65	12,7	-	768062 60900
3/4"	25	19,05 x 1,65	12,7	-	768062 61300
1"	50,5	25,4 x 1,65	12,7	-	768062 61700
1" 1/2	50,5	38,1 x 1,65	12,7	-	768062 62100
2"	64	50,8 x 1,65	12,7	-	768062 62500
2" 1/2	77,5	63,5 x 1,65	12,7	-	768062 62900
3"	91	76,2 x 1,65	12,7	-	768062 63300
4"	119	101,6 x 2,11	15,8	-	768062 63700



SCHIBUOLA LAURO

Products for Plant Automation

www.schibuola.com - info@schibuola.com

tel. 011-6991507 - 011-6502223 cell. 3355367761

