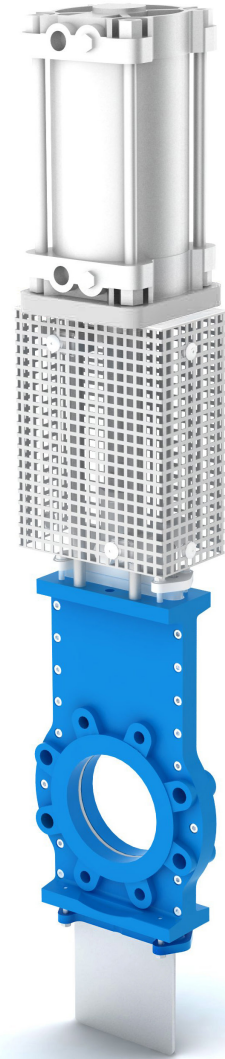
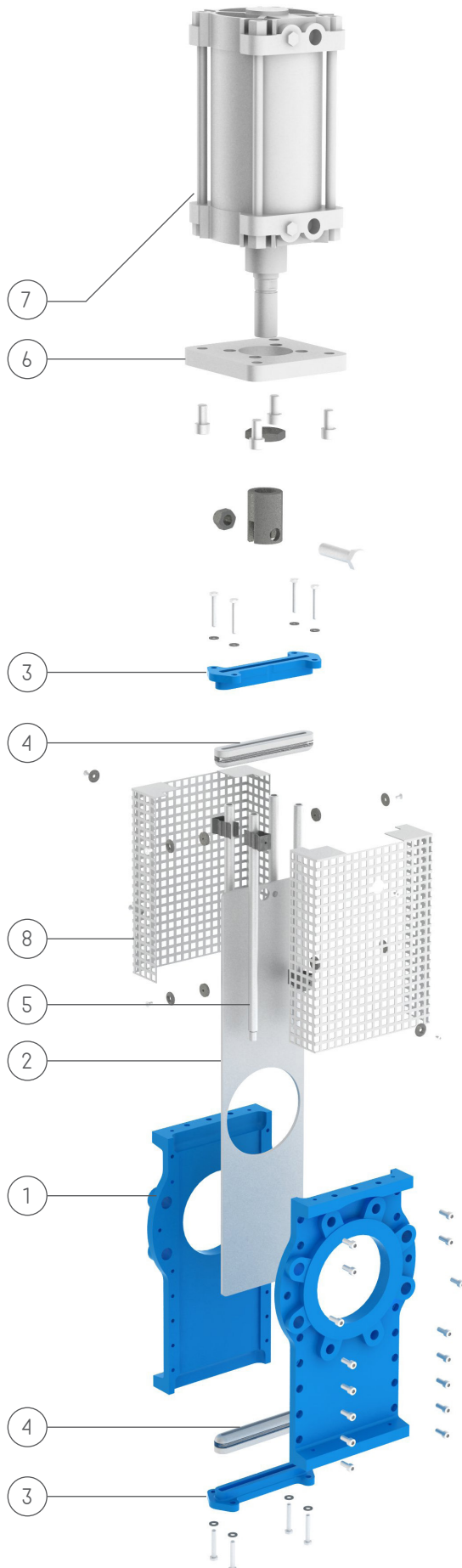


VALVOLA A LAMA PASSANTE CON COMANDO PNEUMATICO D.E.

THROUGH CONDUIT VALVE WITH PNEUMATIC D.A. CONTROL

ART 06



MATERIALI E CARATTERISTICHE / MATERIALS AND CHARACTERISTICS

| | | |
|---|------------------------------------|--|
| 1 | Corpo / Body | GG25, CF8M, Ferro, Acciaio antiusura / GG25, CF8M, Iron, Antiusury steel |
| 2 | Paratoia / Gate | AISI 304, AISI 316, Durtostat 400, SAF 2205 / AISI 304, AISI 316, Durtostat 400, SAF 2205 |
| 3 | Premistoppa / Gland follower | GG25, CF8M / GG25, CF8M |
| 4 | Baderne / Packings | Treccia teflonata, grafitata, cotonata / Teflon. graphited or cotton braid |
| 5 | Colonne / Columns | Ferro zincato, Inox / Galvanized iron, Stainless Steel |
| 6 | Piastra supporto / Support Plate | Ferro verniciato, Inox / Painted Iron, Stainless Steel |
| 7 | Comando / Control | Cilindro pneumatico doppio effetto, con posizionatore pneumatico (3-15 Psi) o elettropneumatico (4-20mA), Oleodinamico / Pneumatic double acting, with 3-15Psi or 4-20 mA positioner, Hydraulic actuator |
| 8 | Protezione lama / Blade protection | Ferro zincato, Acciaio Inox / Galvanized Iron, Stainless Steel |
| | OR / OR | NBR, EPDM, FPM, PTFE (se richiesto) / NBR, EPDM, FPM, PTFE (on demand) |
| | Finecorsa / Limit switches | Meccanici, magnetici, induttivi / Mechanical, magnetic, inductive |
| Passaggio / Passage | | Totale / Total |
| Tenuta verso esterno / Seal towards the outside | | 100% |
| Tenuta monte/valle / Upstream/downstream seal | | 100% se con o-ring / 100% with o-ring |
| Foratura Flange / Flange drilling | | UNI EN 1092 -1 |

Altri materiali e/o versioni a richiesta / Other materials and/or versions up on request
Disponibile anche versione con motore elettrico / Available also with electric motor

VALVOLA A LAMA PASSANTE CON COMANDO PNEUMATICO D.E. / THROUGH CONDUIT VALVE WITH PNEUMATIC D.A CONTROL

| DN | | MISURE (mm) DIMENSION (mm) | | | | PESO WEIGHT | PRESSIONE MAX AMMISSIBILE MAX OPERATING PRESSURE |
|--------|-----|-------------------------------|----|------|-----|----------------|---|
| inch | mm | Y | K | H | L | kg | |
| 2" | 50 | 125 | 50 | 590 | 165 | 8 | ≤ 5 bar |
| 2 1/2" | 65 | 145 | 50 | 600 | 195 | 9 | ≤ 5 bar |
| 3" | 80 | 160 | 55 | 610 | 225 | 10 | ≤ 5 bar |
| 4" | 100 | 180 | 55 | 780 | 267 | 11 | ≤ 5 bar |
| 5" | 125 | 210 | 55 | 820 | 310 | 13 | ≤ 5 bar |
| 6" | 150 | 240 | 60 | 950 | 321 | 17 | ≤ 5 bar |
| 8" | 200 | 295 | 60 | 1220 | 430 | 26 | ≤ 4 bar |
| 10" | 250 | 350 | 65 | 1360 | 533 | 40 | ≤ 3 bar |
| 12" | 300 | 400 | 70 | 1530 | 665 | 54 | ≤ 2,5 bar |
| 14" | 350 | 460 | 75 | 1760 | 815 | 82 | ≤ 2 bar |
| 16" | 400 | 515 | 75 | 2140 | 915 | 110 | ≤ 1,5 bar |
| 18" | 450 | 565 | 75 | 2320 | - | 150 | ≤ 1 bar |
| 20" | 500 | 620 | 80 | - | - | 200 | ≤ 1 bar |
| 24" | 600 | 725 | 80 | - | - | 270 | ≤ 1 bar |

