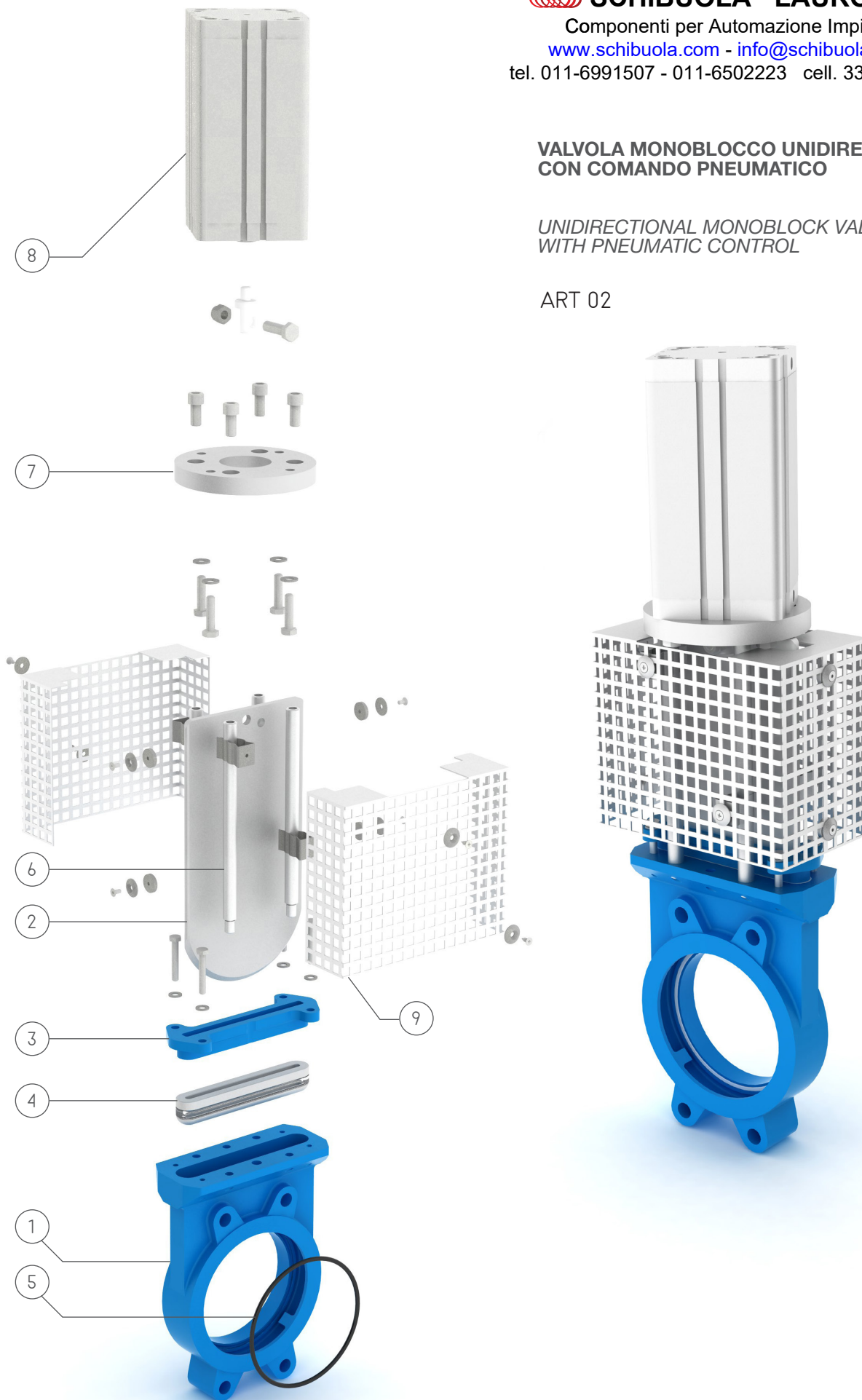


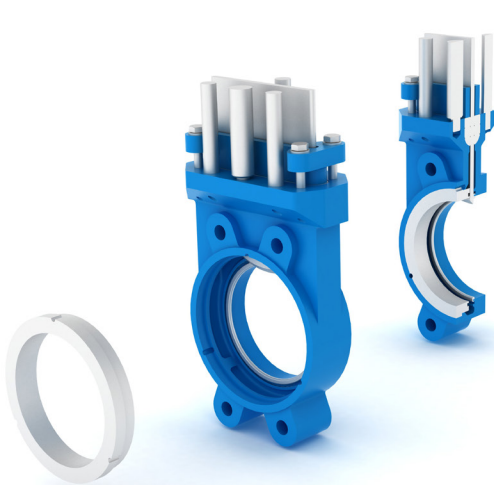
**VALVOLA MONOBLOCCO UNIDIREZIONALE
CON COMANDO PNEUMATICO**

*UNIDIRECTIONAL MONOBLOCK VALVE
WITH PNEUMATIC CONTROL*

ART 02



ACCESSORI - ACCESSORIES

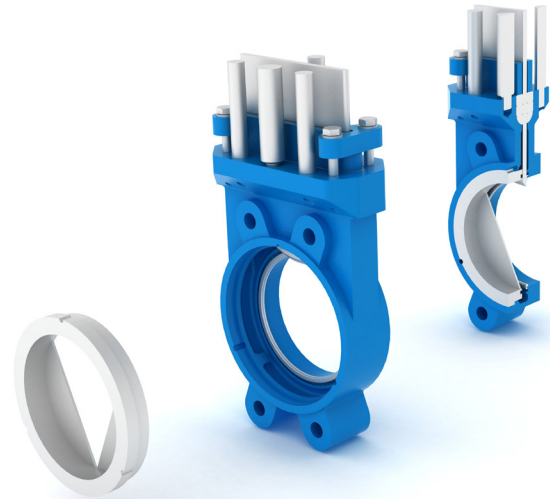


ANELLO CEMENTATO

utilizzato per diminuire l'usura del foro di passaggio

TEMPERED RING

used to reduce usury on passage hole

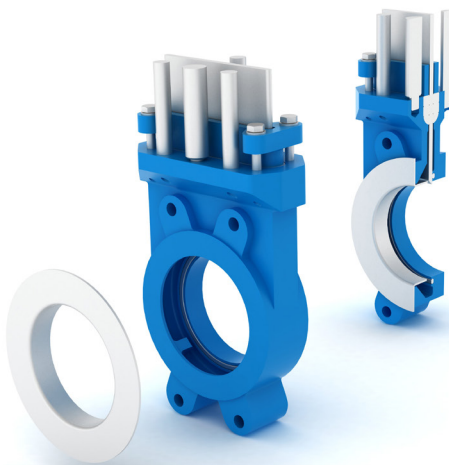


ANELLO CON PASSAGGIO A V

utilizzato per la regolazione del flusso

RING WITH V PASSAGE

used to allow flow regulation



CONO CONVOGLIATORE

utilizzato per proteggere il corpo ed evitare che il prodotto ristagni

CONVEYER CONE

used to protect the body and avoid products penetrations



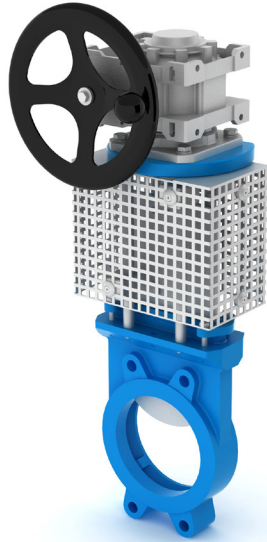
SISTEMA INSUFFLAZIONE

utilizzato per pulire il vano interno del corpo valvola

INSUFFLATION SYSTEM

used to clean body inside

ACCESSORI - ACCESSORIES



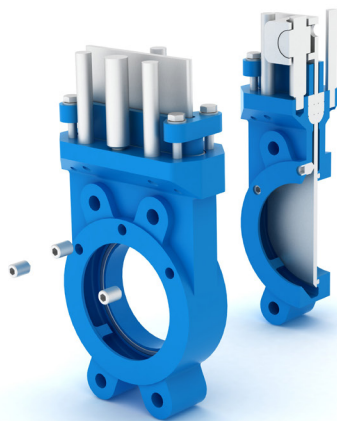
RIDUTTORE CONICO DI MANOVRA

Utilizzato nelle valvole di grosso diametro per facilitare l'apertura e la chiusura
CONIC BEVEL GEARBOX
Used with valves of large diameter to make easier opening and closing

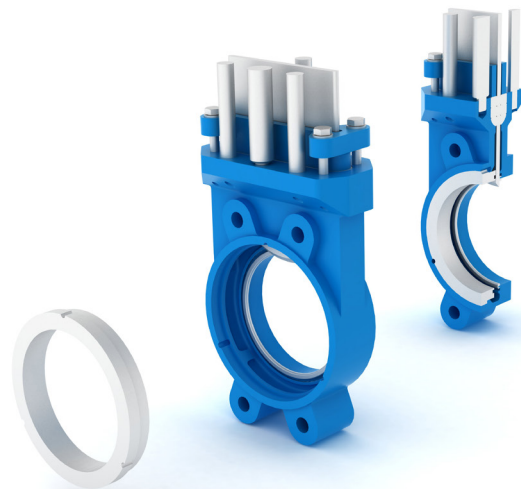


DADI LIMITATORI

Utilizzati per parzializzare l'apertura e la chiusura della valvola
LIMITING NUTS
Used to opening and closing regulation



BIDIREZIONALITÀ CON GRANI
BIDIRECTIONAL WITH PLUNGERS



BIDIREZIONALITÀ CON ANELLO
BIDIRECTIONAL WITH RING

PROLUNGHE - VALVE EXTENSIONS



PROLUNGA TIPO A:
CON CASTELLO DA FISSARE AL PIANO CALPESTIO
*KIND A VALVE EXTENSION: ACTUATOR MUST
BE FIXED ON THE FLOOR*

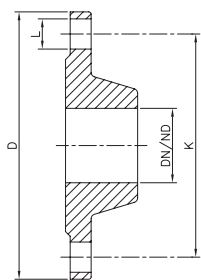


PROLUNGA TIPO B:
SOLO ASTA CENTRALE
*KIND B VALVE EXTENSION: ONLY THE
THREADED ROD IS PROLUNGATE*

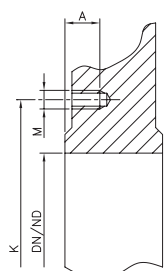


PROLUNGA TIPO C:
CON CASTELLO COMPLETO
*KIND C VALVE EXTENSION: THE SUPPORT OF
ACTUATOR IS TOTALLY PROLUNGATE*

ASSEMBLAGGIO TRA 2 FLANGE / ASSEMBLING BETWEEN 2 FLANGES



Dettaglio Flangia
Flange detail



Dettaglio corpo
Body detail

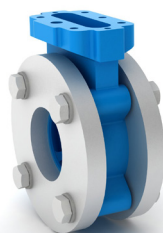
DN		UNI EN 1092-1 PN 10 (Ex UNI EN 2277-67 PN 10)			Necessario per assemblaggio tra 2 flange Equipment for assembling between 2 flanges				
		Diametro esterno External diameter D	Interasse Fori Drilling circle K	Numero Fori x Ø L Hole number x Ø L	Viti numero x M - Lg Screw number x M - Lg	Bulloni numero x M - Lg Bolts number x M - Lg	Profondità Fori Threading depth A	Spessore Flangia Thickness flange	Scartamento Valvola Gauge Valve
inch	mm	mm	mm	no. x Ø	mm	mm	mm	mm	mm
2"	50	Ø 165	Ø 125	4 x Ø 18	8 x M16 - 25	*	11	18	45
2" 1/2	65	Ø 185	Ø 145	4 x Ø 18	8 x M16 - 25	*	11	18	45
3"	80	Ø 200	Ø 160	4 x Ø 18	8 x M16 - 30	*	11	20	45
4"	100	Ø 220	Ø 180	8 x Ø 18	8 x M16 - 30	4 x M16 - 140	11	22	50
5"	125	Ø 250	Ø 210	8 x Ø 18	8 x M16 - 30	4 x M16 - 140	11	24	50
6"	150	Ø 285	Ø 240	8 x Ø 22	8 x M20 - 35	4 x M20 - 150	12	24	55
8"	200	Ø 340	Ø 295	8 x Ø 22	8 x M20 - 35	4 x M20 - 160	12	26	60
10"	250	Ø 395	Ø 350	12 x Ø 22	12 x M20 - 35	6 x M20 - 160	12	28	60
12"	300	Ø 445	Ø 400	12 x Ø 22	12 x M20 - 35	6 x M20 - 160	12	28	60
14"	350	Ø 505	Ø 460	16 x Ø 22	20 x M20 - 40	6 x M20 - 180	14	30	70
16"	400	Ø 565	Ø 515	16 x Ø 25	20 x M24 - 50	6 x M24 - 210	22	32	90
18"	450	Ø 615	Ø 565	20 x Ø 25	28 x M24 - 50	6 x M24 - 230	22	32	110
20"	500	Ø 670	Ø 620	20 x Ø 25	28 x M24 - 55	6 x M24 - 230	22	34	110
24"	600	Ø 780	Ø 725	20 x Ø 30	28 x M27 - 55	6 x M27 - 240	24	36	110
28"	700	Ø 895	Ø 840	24 x Ø 30	32 x M27	8 x M27	24	38	110
32"	800	Ø 1015	Ø 950	24 x Ø 33	32 x M30	8 x M30	24	40	110
36"	900	Ø 1115	Ø 1050	28 x Ø 33	40 x M30	8 x M30	24	42	120
40"	1000	Ø 1230	Ø 1160	28 x Ø 36	40 x M30	8 x M30	24	44	120



VITE
SCREW

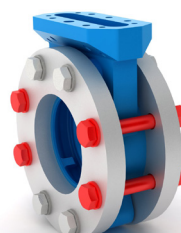


BULLONE
BOLT



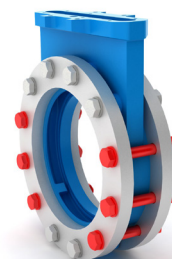
DN50÷DN80
n°4+4 fori
n°8 viti

DN50÷DN80
n°4+4 holes
n°8 screws



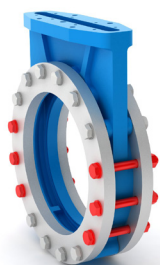
DN100÷DN200
n°8+8 fori
n°8 viti + n°4 bulloni

DN100÷DN200
n°8+8 holes
n°8 screws + n°4 bolts



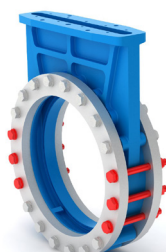
DN250÷DN300
n°12+12 fori
n°12 viti + n°6 bulloni

DN250÷DN300
n°12+12 holes
n°12 screws + n°6 bolts



DN350÷DN400
n°16+16 fori
n°20 viti + n°6 bulloni

DN350÷DN400
n°16+16 holes
n°20 screws + n°6 bolts



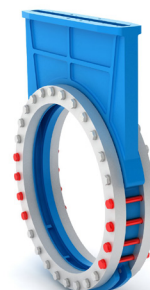
DN450÷DN600
n°20+20 fori
n°28 viti+n°6 bulloni

DN450÷DN600
n°20+20 holes
n°28 screws + n°6 bolts



DN700÷DN800
n°24+24 fori
n°32 viti + n°8 bulloni

DN700÷DN800
n°24+24 holes
n°32 screws + n°8 bolts



DN900÷DN1000
n°28+28 fori
n°40 viti + n°8 bulloni

DN700÷DN1000
n°28+28 holes
n°40 screws + n°8 bolts

MATERIALI E CARATTERISTICHE / MATERIALS AND CHARACTERISTICS

1	Corpo / Body	GG25, GGG40, CF8, CF8M, BRONZO / GG25, GGG40, CF8, CF8M, BRONZE
2	Paratoia / Gate	AISI 304, AISI 316, Durostat 400, SAF 2205, ACCIAIO ANTIUSURA / AISI 304, AISI 316, Durostat 400, SAF 2205, ANTIUSURY STEEL
3	Premistoppa / Gland follower	Ghisa, Alluminio, Inox / Cast Iron, Aluminium, Stainless Steel
4	Baderne / Packings	Treccia teflonata, grafitata, cotonata e silicone / Teflon graphited or cotton braid and silicon
5	OR / OR	NBR, EPDM, FPM, PTFE / NBR, EPDM, FPM, PTFE
6	Colonne / Columns	Ferro zincato, Inox / Galvanized iron, Stainless Steel
7	Piastra supporto / Support Plate	Ferro verniciato, Ferro zincato, Inox / Iron painted, Iron galvanized, Stainless Steel
8	Comando / Control	Cilindro pneumatico doppio effetto, semplice effetto con posizionatore pneumatico (3-15 Psi) o elettropneumatico (4-20 mA), oleodinamico / Pneumatic Double or Single Acting, with 3-15 Psi or 4-20 mA positioner, Hydraulic actuator
9	Protezione lama / Gate protection	Ferro zincato, Inox / Iron galvanized, Stainless Steel
	Fincorsa / Limit switches	Meccanici, magnetici, induttivi / Mechanical, magnetic, inductive
Passaggio / Passage		Totale / Total
Tenuta verso esterno / Seal towards the outside		100%
Tenuta monte/valle / Upstream/downstream seal		100%
Foratura Flange / Flange drilling		UNI EN 1092 -1 PN 10 (EX UNI2277 - PN10)

Altri materiali e/o versioni a richiesta / Other materials and/or versions up on request

VALVOLA MONOBLOCCO CON COMANDO PNEUMATICO D.E. / MONOBLOCK VALVE WITH PNEUMATIC D.A. CONTROL

DN		MISURE (mm) DIMENSION (mm)			PESO WEIGHT	PRESSIONE MAX AMMISSIBILE MAX OPERATING PRESSURE
inch	mm	Y	K	H	kg	
2"	50	125	45	445	10	≤ 10 bar
2"1/2	65	145	45	480	11	≤ 10 bar
3"	80	160	45	510	12	≤ 10 bar
4"	100	180	50	520	14	≤ 10 bar
5"	125	210	50	615	20	≤ 10 bar
6"	150	240	55	675	22	≤ 10 bar
8"	200	295	60	850	34	≤ 8 bar
10"	250	350	60	1070	60	≤ 6 bar
12"	300	400	60	1180	73	≤ 5 bar
14"	350	460	70	1560	120	≤ 4 bar
16"	400	515	90	1700	150	≤ 3 bar
18"	450	565	110	1860	200	≤ 2,5 bar
20"	500	620	110	2070	280	≤ 2 bar
24"	600	725	110	-	360	≤ 1,5 bar
28"	700	840	110	-	-	≤ 1 bar
32"	800	950	110	-	-	≤ 1 bar

