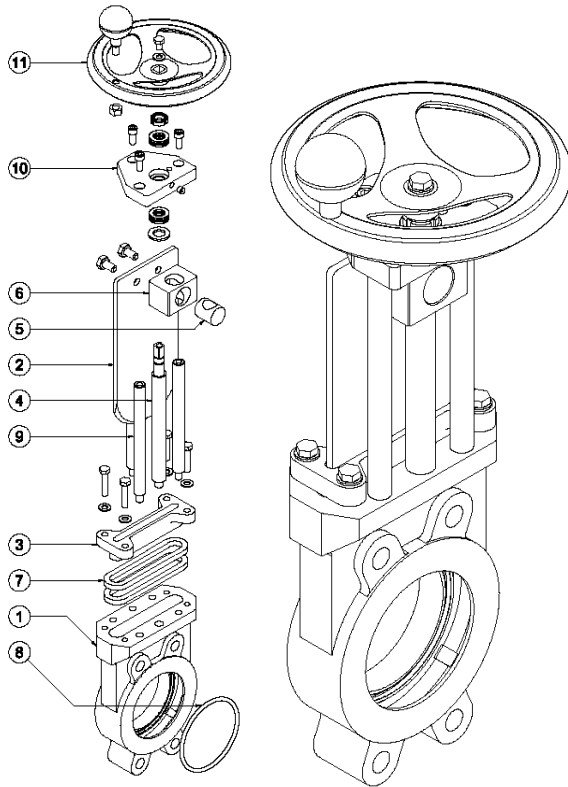


**VALVOLA MONOBLOCCO UNIDIREZIONALE TIPO WAFER CON COMANDO MANUALE**  
 UNIDIRECTIONAL MONOBLOCK VALVE WITH MANUAL CONTROL


ART. 01

**MATERIALI E CARATTERISTICHE/MATERIALS AND CHARACTERISTICS**

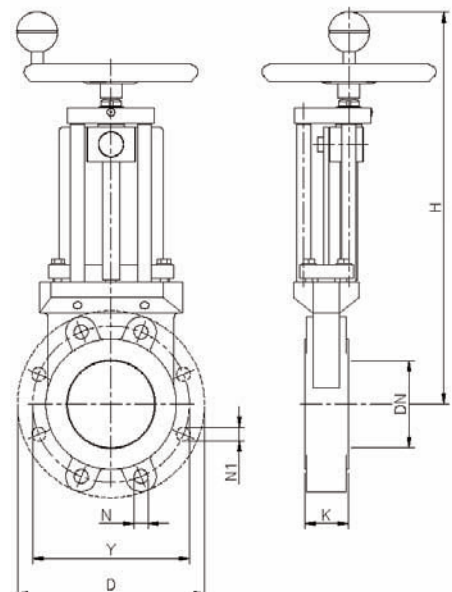
1	Corpo/Body.	GG25, GGG40, AISI 304, AISI 316, BRONZO/GG25, GGG40, AISI 304, AISI 316, Bronze
2	Paratoia/Gate.	AISI 304, AISI 316, Durostat 400, SAF 2205/AISI 304, AISI 316, Durostat 400, SAF 2205
3	Premistoppa/Gland follower.	Ghisa, Alluminio, Inox/Cast iron, Aluminium, Stainless Steel
4	Asta filettata NON SALIENTE/NON salient threaded rod.	AISI 304/AISI 304
5	Chiocciola/Nut.	Ottone/Brass
6	Blocchetto/Support.	Alluminio/Aluminium
7	Baderne/Packings.	Treccia teflonata, grafitata, cotonata/Teflon, graphited or cotton braid
8	OR/OR.	NBR, EPDM, FPM, PTFE/NBR, EPDM, FPM, PTFE
9	Colonne/Columns.	Fe zincato, Inox/Iron galvanized, Stainless Steel
10	Piastra supporto/Support plate.	Fe verniciato, Fe zincato, Inox/Iron painted, Iron galvanized, Stainless Steel
11	Comando/Control.	Volantino in Fe verniciato/Iron painted handwheel

Passaggio/Passage:	Totale/Total
Tenuta v/esterno/Seal towards the outside:	100%
Tenuta monte/valle/Upstream/Downstream seat:	100%
Foratura flange/Flange drilling:	UNI EN 1092-1 PN 10 (EX UNI2277-PN10)

Altri materiali e/o versioni a richiesta/Other materials and/or versions upon request

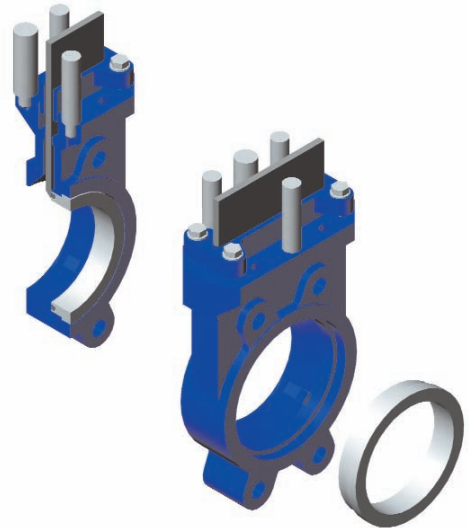
**VALVOLA MONOBLOCCO CON COMANDO A VOLANTINO**  
 MONOBLOCK VALVE WITH MANUAL CONTROL

DN	MISURE (mm) DIMENSIONS (MM)							PESO WEIGHT KG	PRESSIONE MAX DI ESERCIZIO MAX. OPERATING PRESSURE
	inch	mm	Y	N	N1	K	D		
2"	50	125	4xM16	-	45	165	370	8	≤ 10 Bar
2 1/2"	65	145	4xM16	-	45	185	405	9	≤ 10 Bar
3"	80	160	4xM16	-	45	200	435	10	≤ 10 Bar
4"	100	180	4xM16	4xØ16	50	220	445	11	≤ 10 Bar
5"	125	210	4xM16	4xØ16	50	250	480	13	≤ 10 Bar
6"	150	240	4xM20	4xØ20	55	285	535	17	≤ 10 Bar
8"	200	295	4xM20	4xØ20	60	340	660	26	≤ 8 Bar
10"	250	350	6xM20	6xØ20	60	395	765	40	≤ 6 Bar
12"	300	400	6xM20	6xØ20	60	445	880	54	≤ 5 Bar
14"	350	460	10xM20	6xØ20	70	505	970	82	≤ 4 Bar
16"	400	515	10xM24	6xØ24	90	565	1085	110	≤ 3 Bar
18"	450	565	14xM24	6xØ24	110	615	1180	150	≤ 2,5 Bar
20"	500	620	14xM24	6xØ24	110	670	1300	200	≤ 2 Bar
24"	600	725	14xM27	6xØ27	110	780	1500	270	≤ 1,5 Bar
28"	700	840	16xM27	8xØ27	110	895	1700	350	≤ 1 Bar
32"	800	950	16xM30	8xØ30	110	1015	1900	440	≤ 1 Bar
36"	900	1050	20xM30	8xØ30	130	1115	2500	700	≤ 1 Bar
40"	1000	1160	20xM30	8xØ30	130	1230	2700	820	≤ 1 Bar

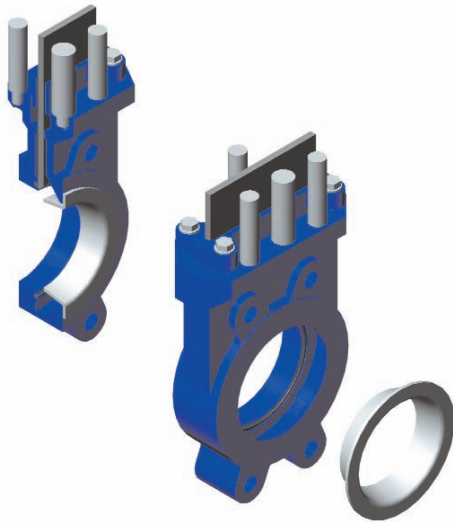




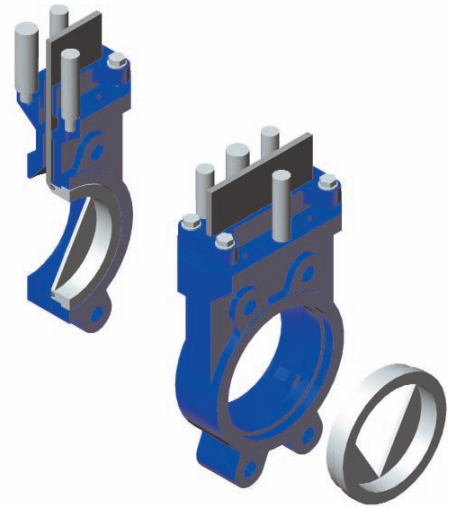
SISTEMA DI INSUFFLAZIONE Utilizzato per pulire il vano interno del corpo valvola  
INSUFFLATION SYSTEM Used to clean body inside



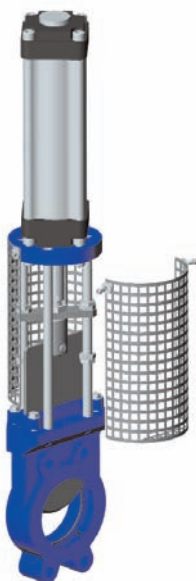
ANELLO CEMENTATO Utilizzato per diminuire l'usura del foro di passaggio  
TEMPERED RING Used to reduce abrasion on passage hole



CONO CONVOGLIATORE Utilizzato per proteggere il corpo ed evitare che il prodotto ristagni  
CONVEYER CONE Used to protect the body and avoid products penetration in the dead parts of the body



ANELLO CON PASSAGGIO A "V" Utilizzato per la regolazione del flusso  
RING WITH "V" PASSAGE Used to allow flow regulation



DADI LIMITATORI Utilizzati per parzializzare l'apertura e la chiusura della valvola  
LIMITING NUTS Used to opening and closing regulation

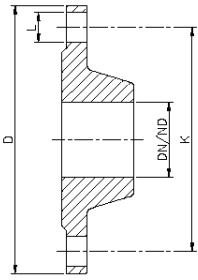


RIDUTTORE CONICO DI MANOVRA Utilizzato nelle valvole di grosso diametro per facilitare l'apertura e la chiusura  
CONIC BEVEL GEARBOX Used with valves of large diameter to make easier opening and closing

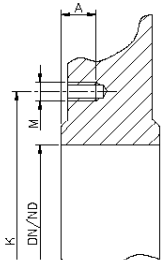


PROLUNGA DI COMANDO  
VALVE EXTENSION

# CARATTERISTICHE TECNICHE TECHNICAL CHARACTERISTICS

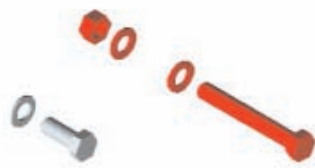


Dettaglio Flangia  
Flange detail



Dettaglio corpo  
Body detail

DN		UNI EN 1092-1 PN 10 (Ex UNI EN 2277-67 PN 10)			Necessario per assemblaggio tra 2 flange Equipment for assembling between 2 flanges				
		Diametro esterno External diameter D	Interasse Fori Drilling circle K	Numero Fori x Ø L Hole number x Ø L	Viti numero x M - Lg Screw number x M - Lg	Bulloni numero x M - Lg Bolts number x M - Lg	Profondità Fori Threading depth A	Spessore Flangia Thickness flange	Scartamento Valvola Gauge Valve
Inch	mm	mm	mm	no. x Ø	mm	mm	mm	mm	mm
2"	50	Ø 165	Ø 125	4 x Ø 18	8 x M16 - 25	*	11	18	45
2" 1/2	65	Ø 185	Ø 145	4 x Ø 18	8 x M16 - 25	*	11	18	45
3"	80	Ø 200	Ø 160	4 x Ø 18	8 x M16 - 30	*	11	20	45
4"	100	Ø 220	Ø 180	8 x Ø 18	8 x M16 - 30	4 x M16 - 140	11	22	50
5"	125	Ø 250	Ø 210	8 x Ø 18	8 x M16 - 30	4 x M16 - 140	11	24	50
6"	150	Ø 285	Ø 240	8 x Ø 22	8 x M20 - 35	4 x M20 - 150	12	24	55
8"	200	Ø 340	Ø 295	8 x Ø 22	8 x M20 - 35	4 x M20 - 160	12	26	60
10"	250	Ø 395	Ø 350	12 x Ø 22	12 x M20 - 35	6 x M20 - 160	12	28	60
12"	300	Ø 445	Ø 400	12 x Ø 22	12 x M20 - 35	6 x M20 - 160	12	28	60
14"	350	Ø 505	Ø 460	16 x Ø 22	20 x M20 - 40	6 x M20 - 180	14	30	70
16"	400	Ø 565	Ø 515	16 x Ø 25	20 x M24 - 50	6 x M24 - 210	22	32	90
18"	450	Ø 615	Ø 565	20 x Ø 25	28 x M24 - 50	6 x M24 - 230	22	32	110
20"	500	Ø 670	Ø 620	20 x Ø 25	28 x M24 - 55	6 x M24 - 230	22	34	110
24"	600	Ø 780	Ø 725	20 x Ø 30	28 x M27 - 55	6 x M27 - 240	24	36	110
28"	700	Ø 895	Ø 840	24 x Ø 30	32 x M27	8 x M27	24	38	110
32"	800	Ø 1015	Ø 950	24 x Ø 33	32 x M30	8 x M30	24	40	110
36"	900	Ø 1115	Ø 1050	28 x Ø 33	40 x M30	8 x M30	24	42	120
40"	1000	Ø 1230	Ø 1160	28 x Ø 36	40 x M33	8 x M33	24	44	120
48"	1200	Ø 1455	Ø 1380	32 x Ø 39	*	*	*	*	*



VITE  
SCREW

BULLONE  
BOLT



DN50÷DN80  
n°4+4 fori  
n°8 viti  
DN50÷DN80  
n°4+4 holes  
n°8 screws



DN100÷DN200  
n°8+8 fori  
n°8 viti + n°4 bulloni  
DN100÷DN200  
n°8+8 holes  
n°8 screws + n°4 bolts



DN250÷DN300  
n°12+12 fori  
n°12 viti + n°6 bulloni  
DN250÷DN300  
n°12+12 holes  
n°12 screws + n°6 bolts



DN350÷DN400  
n°16+16 fori  
n°20 viti + n°6 bulloni  
DN350÷DN400  
n°16+16 holes  
n°20 screws + n°6 bolts



DN450÷DN600  
n°20+20 fori  
n°28 viti+n°6 bulloni  
DN450÷DN600  
n°20+20 holes  
n°28 screws + n°6 bolts



DN700÷DN800  
n°24+24 fori  
n°32 viti + n°8 bulloni  
DN700÷DN800  
n°24+24 holes  
n°32 screws + n°8 bolts



DN900÷DN1000  
n°28+28 fori  
n°40 viti + n°8 bulloni  
DN900÷DN1000  
n°28+28 holes  
n°40 screws + n°8 bolts