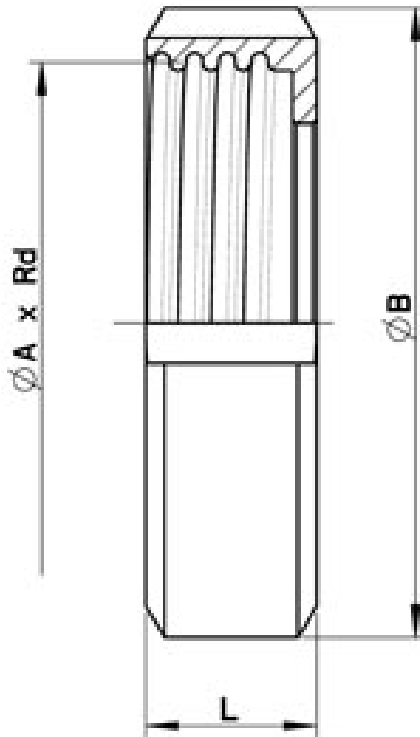


# 733001

DIN 11851 STOP RING  
Material: AISI 304L (1.4307) - AISI 316L (1.4404)



DN	Ø A x Rd	Ø B	L	Kg	CODE AISI 304L
10	28 x 1/8"	38	18	0,06	733001 40100
15	34 x 1/8"	44	18	0,08	733001 40400
20	44 x 1/6"	54	20	0,13	733001 40700
25	52 x 1/6"	63	21	0,18	733001 41000
32	58 x 1/6"	70	21	0,21	733001 41300
40	65 x 1/6"	78	21	0,25	733001 41600
50	78 x 1/6"	92	22	0,33	733001 41900
60	85 x 1/6"	99	22	0,39	733001 42000
65	95 x 1/6"	112	25	0,58	733001 42200
80	110 x 1/4"	127	30	0,79	733001 42500
90	120 x 1/4"	138	30	0,96	733001 42700
100	130 x 1/4"	148	31	1,02	733001 42800
125	160 x 1/4"	178	35	1,64	733001 43100
150	190 x 1/4"	210	40	2,45	733001 43600

---

 **SCHIBUOLA LAURO**  
Products for Plant Automation  
[www.schibuola.com](http://www.schibuola.com) - [info@schibuola.com](mailto:info@schibuola.com)  
tel. 011-6991507 - 011-6502223 cell. 3355367761

