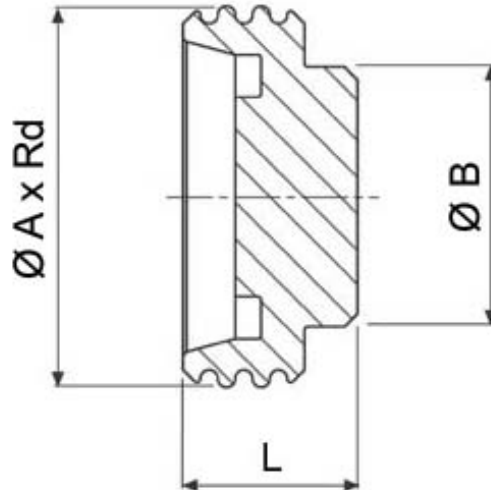




762105

DIN 11851 FEMALE PLUG
 Material: AISI 304L (1.4307) - AISI 316L (1.4404)



DN	Ø A x Rd	Ø B	L	Kg	CODE AISI 304L	CODE AISI 316L
10	28 x 1/8"	22	22	0,08	762105 40800	762105 60800
15	34 x 1/8"	28	22	0,10	762105 41400	762105 61400
20	44 x 1/6"	35	24	0,16	762105 42000	762105 62000
25	52 x 1/6"	42	24	0,22	762105 42600	762105 62600
32	58 x 1/6"	50	24	0,30	762105 43000	762105 63000
40	65 x 1/6"	56	24	0,38	762105 43400	762105 63400
50	78 x 1/6"	68	24	0,54	762105 43800	762105 63800
60	85 x 1/6"	76	25	0,74	762105 44000	762105 64000
65	95 x 1/6"	86	27	0,98	762105 44400	762105 64400
80	110 x 1/4"	100	31	1,53	762105 44800	762105 64800
90	120 x 1/4"	110	31	1,83	762105 45000	762105 65000
100	130 x 1/4"	122	32	2,20	762105 45400	762105 65400
125	160 x 1/4"	140	40	4,05	762105 45800	762105 65800
150	190 x 1/4"	170	45	6,70	762105 46200	762105 66200



SCHIBUOLA LAURO

Products for Plant Automation

www.schibuola.com - info@schibuola.com

tel. 011-6991507 - 011-6502223 cell. 3355367761

