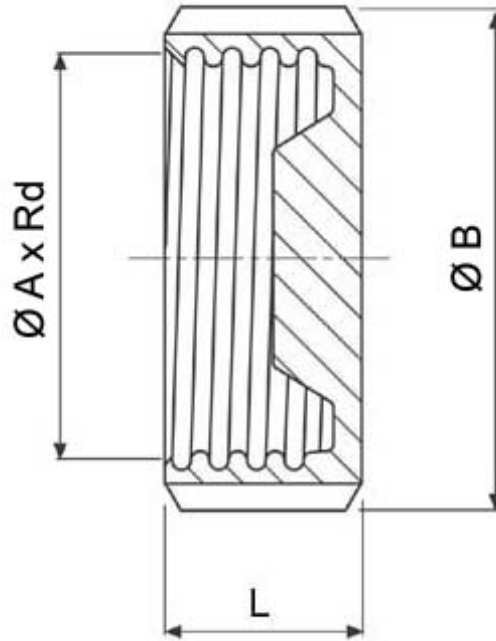


# 762200

DIN 11851 STOP RING PLUG WITH CONICAL SEAL  
Material: AISI 304L (1.4307) - AISI 316L (1.4404)



DN	Ø A x Rd	Ø B	L	Kg	CODE AISI 304L
10	28 x 1/8"	38	18	0,09	762200 40800
15	34 x 1/8"	44	18	0,12	762200 41400
20	44 x 1/6"	54	21	0,20	762200 42000
25	52 x 1/6"	63	21	0,31	762200 42600
32	58 x 1/6"	70	21	0,43	762200 43000
40	65 x 1/6"	78	21	0,46	762200 43400
50	78 x 1/6"	92	22	0,71	762200 43800
60	85 x 1/6"	99	22	-	762200 44000
65	95 x 1/6"	112	25	1,25	762200 44400
80	110 x 1/4"	127	30	1,71	762200 44800
90	120 x 1/4"	138	30	-	762200 45000
100	130 x 1/4"	148	31	2,68	762200 45400
125	160 x 1/4"	178	32	-	762200 45800
150	190 x 1/4"	210	40	-	762200 46200



**SCHIBUOLA LAURO**

Products for Plant Automation

[www.schibuola.com](http://www.schibuola.com) - [info@schibuola.com](mailto:info@schibuola.com)

tel. 011-6991507 - 011-6502223 cell. 3355367761

