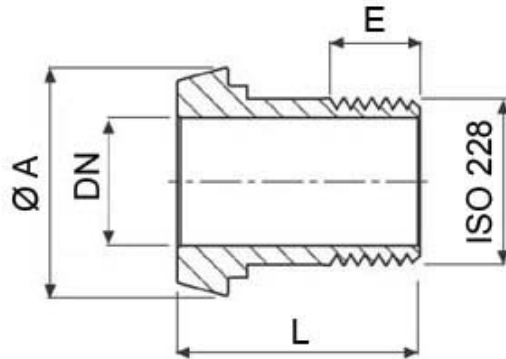




## 765200

DIN 11851 MALE FOR ISO 228 GAS MALE  
Material: AISI 304L (1.4307) - AISI 316L (1.4404)



DN x ISO 228	diam_aa	EE	LL	Kg	304	CODE AISI 316L
10 x 3/8"	22	13	30	0,04	765200 40800	765200 60800
15 x 1/2"	28	14	33	0,05	765200 41400	765200 61400
20 x 3/4"	36	15	38	0,10	765200 42000	765200 62000
25 x 1"	44	15	42	0,17	765200 42600	765200 62600
32 x 1"1/4	50	17	45	0,21	765200 43000	765200 63000
40 x 1"1/2	56	18	47	0,23	765200 43400	765200 63400
50 x 2"	68	20	51	0,37	765200 43800	765200 63800
65 x 2"1/2	86	20	52	0,58	765200 44400	765200 64400
80 x 3"	100	25	57	0,67	765200 44800	765200 64800
100 x 4"	121	25	60	1,09	765200 45400	765200 65400



**SCHIBUOLA LAURO**

Products for Plant Automation

[www.schibuola.com](http://www.schibuola.com) - [info@schibuola.com](mailto:info@schibuola.com)

tel. 011-6991507 - 011-6502223 cell. 3355367761

