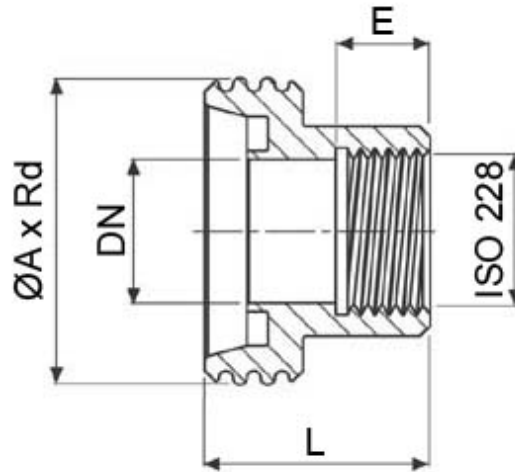




## 765211

DIN 11851 FEMALE FOR ISO 228 GAS FEMALE  
Material: AISI 304L (1.4307) - AISI 316L (1.4404)



DN	Ø A x Rd	E	L	Kg	CODE AISI 304L	CODE AISI 316L
10 x 3/8"	28 x 1/8"	13	25	0,05	765211 40800	765211 60800
15 x 1/2"	34 x 1/8"	15	26	0,08	765211 41400	765211 61400
20 x 3/4"	44 x 1/6"	16	28	0,12	765211 42000	765211 62000
25 x 1"	52 x 1/6"	16	30	0,16	765211 42600	765211 62600
32 x 1"1/4	58 x 1/6"	17	31	0,18	765211 43000	765211 63000
40 1"1/2	65 x 1/6"	18	32	0,22	765211 43400	765211 63400
50 x 2"	78 x 1/6"	20	34	0,31	765211 43800	765211 63800
60 x 2"	85 x 1/6"	20	34	0,501	765211 44000	765211 64000
65 2"1/2	95 x 1/6"	21	36	0,46	765211 44400	765211 64400
80 x 3"	110 x 1/4"	24	40	0,68	765211 44800	765211 64800
100 x 4"	130 x 1/4"	25	42	1,75	765211 45400	765211 65400



**SCHIBUOLA LAURO**

Products for Plant Automation

[www.schibuola.com](http://www.schibuola.com) - [info@schibuola.com](mailto:info@schibuola.com)

tel. 011-6991507 - 011-6502223 cell. 3355367761

