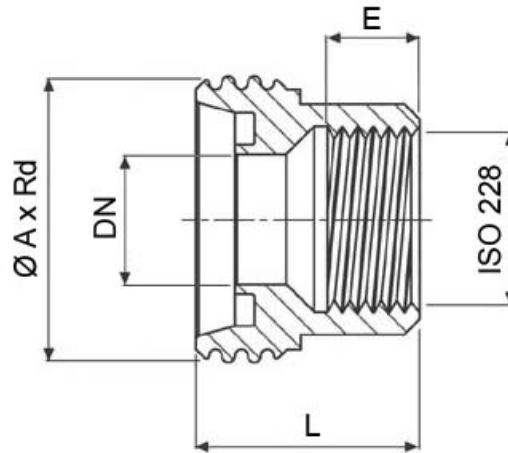




767105

DIN 11851 FEMALE FOR ISO 228 GAS FEMALE REDUCTION
Material: AISI 304L (1.4307) - AISI 316L (1.4404)



DN x ISO 228	$\varnothing A \times Rd$	E	L	Kg	CODE AISI 304L	CODE AISI 316L
10 x 1/4"	28 x 1/8"	13	25	0,06	767105 40800	767105 60800
15 x 1/4"	34 x 1/8"	13	26	-	767105 41000	767105 61000
15 x 3/8"	34 x 1/8"	14	26	0,10	767105 41400	767105 61400
20 x 1/2"	44 x 1/6"	15	28	0,16	767105 42000	767105 62000
25 x 1/2"	52 x 1/6"	17	30	0,245	767105 42400	767105 62400
25 x 3/4"	52 x 1/6"	17	30	0,21	767105 42600	767105 62600
32 x 3/4"	58 x 1/6"	17	31	0,33	767105 42800	767105 62800
32 x 1"	58 x 1/6"	17	31	0,28	767105 43000	767105 63000
40 x 1"	65 x 1/6"	18	32	0,400	767105 43300	767105 63300
40 x 1"1/4	65 x 1/6"	19	32	0,31	767105 43400	767105 63400
50 x 1"1/4	78 x 1/6"	19	34	0,613	767105 43700	767105 63700
50 x 1"1/2	78 x 1/6"	19	34	0,52	767105 43800	767105 63800
65 x 2"	95 x 1/6"	20	36	0,83	767105 44400	767105 64400
80 x 2"1/2	110 x 1/4"	20	40	1,13	767105 4480	767105 64800
100 x 3"	130 x 1/4"	24	42	1,71	767105 45400	767105 65400



SCHIBUOLA LAURO

Products for Plant Automation

www.schibuola.com - info@schibuola.com

tel. 011-6991507 - 011-6502223 cell. 3355367761

