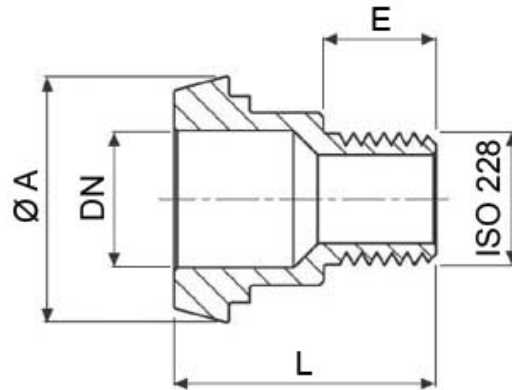




## 767200

DIN 11851 MALE FOR ISO 228 GAS MALE REDUCED  
Material: AISI 304L (1.4307) - AISI 316L (1.4404)



DN x ISO 228	Ø A	E	L	Kg	CODE AISI 304L	CODE AISI 316L
10 x 1/4"	22	11	28	0,04	767200 40800	767200 60800
15 x 1/4"	28	11	30	0,07	767200 41000	767200 61000
15 x 3/8"	28	13	32	0,07	767200 41400	767200 61400
20 x 3/8"	36	13	34	0,12	767200 41800	767200 61800
20 x 1/2"	36	15	36	0,14	767200 42000	767200 62000
25 x 1/2"	44	15	38	0,17	767200 42400	767200 62400
25 x 3/4"	44	16	39	0,17	767200 42600	767200 62600
32 x 3/4"	50	16	40	0,22	767200 42900	767200 62900
32 x 1"	50	17	41	0,22	767200 43000	767200 63000
40 x 1"	56	17	44	0,31	767200 43200	767200 63200
40 x 1"1/4	56	18	45	0,30	767200 43400	767200 63400
50 x 1"	68	17	46	0,51	767200 43500	767200 63500
50 x 1"1/4	68	18	47	0,52	767200 43600	767200 63600
50 x 1"1/2	68	20	49	0,46	767200 43800	767200 63800
65 x 1"1/2	86	20	52	0,85	767200 44300	767200 64300
65 x 2"	86	20	52	0,82	767200 44400	767200 64400
80 x 2"1/2	100	23	55	1,02	767200 44800	767200 64800
100 x 3"	121	25	60	1,58	767200 45400	767200 65400



**SCHIBUOLA LAURO**

Products for Plant Automation

[www.schibuola.com](http://www.schibuola.com) - [info@schibuola.com](mailto:info@schibuola.com)

tel. 011-6991507 - 011-6502223 cell. 3355367761

