

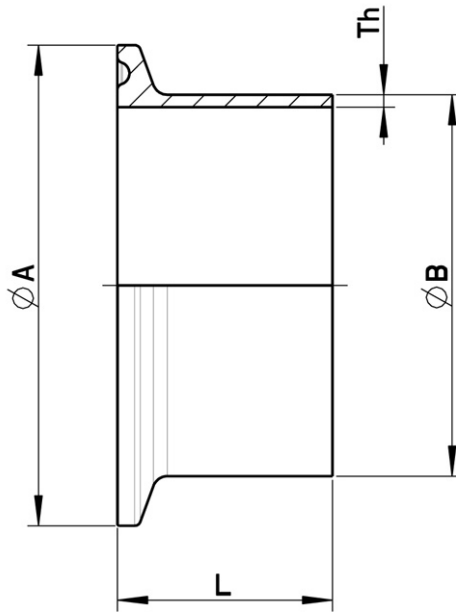


768062 FOR BS PIPE

CLAMP Smooth shank to BUTT WELDING DIN 32676 TABLE 4 REIHE C

According to normative BS/OD ASTM A270 for TUBE

Material: AISI 316L (1.4404)



SIZE INCH	Ø A	Ø B x Th	L	Kg	CODE AISI 316L
1/4"	25	6,35 x 1	28	-	768062 60200
3/8"	25	9,53 x 1	28	-	768062 60600
1/2"	25	12,7 x 1,65	28	-	768062 61000
3/4"	25	19,05 x 1,65	28	-	768062 61400
1"	50,5	25,4 x 1,65	28,6	-	768062 61800
1" 1/2	50,5	38,1 x 1,65	28,6	-	768062 62200
2"	64	50,8 x 1,65	28,6	-	768062 62600
2" 1/2	77,5	63,5 x 1,65	28,6	-	768062 63000
3"	91	76,2 x 1,65	28,6	-	768062 63400
4"	119	101,6 x 2,11	28,6	-	768062 63800
6"	167	152,4 x 2,77	28	-	768062 64200



SCHIBUOLA LAURO

Products for Plant Automation

www.schibuola.com - info@schibuola.com

tel. 011-6991507 - 011-6502223 cell. 3355367761

