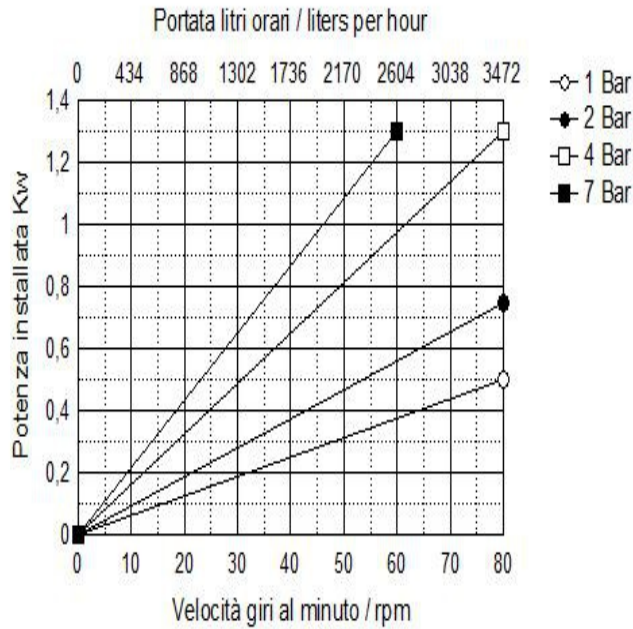


Hose Carrier HCP

PRODUCT INFORMATIONS

Hose Carrier HCP 35

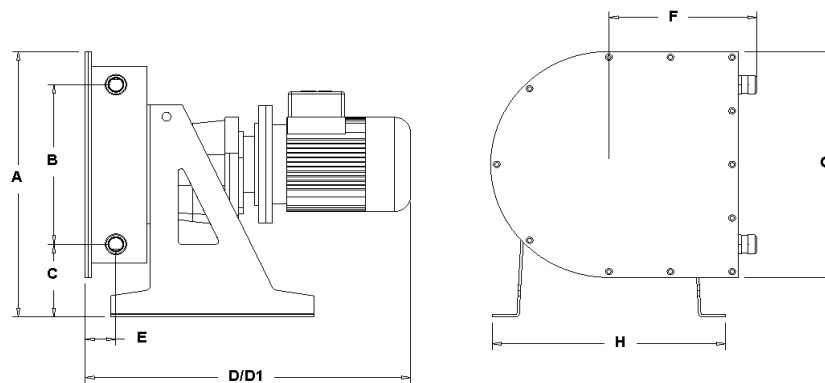


TECHNICAL DATA	
Delivery max	3500 l/Hour
Head max*	7 bar
Vacuum	0,95 bar
Delivery per revolution	0,723 liters
Barb hose	DN 40
Free passage	30 mm
Weight	
Power Kw	0,5-1,5
Hose fiber reinforced available in different materials	NR
	NBR
	HYP
	EPDM
	NRA
Leakage sensor	Option
Cooling device	Option
Different connections	Option

VERSIONS AVAILABLE

- Variables with mechanical speed variator, from 1:5
- Variable electronic inverter integrated IP 65
- Trailers for slow hand towing in site
- Electrical control panels aboard the machine

Note: in the presence of fluids particularly viscous, suspensions coarse solid, high delivery pressure, high temperatures, consider operate not more than 30 % of the maximum flow rate of the pump.
*According to the transmission applied



DIMENSIONS											
A	B	C	D	D1(VAR)	E	F	G	H	I	Out/In	Weight
550	348	136	590	800	65	290	480	446	-	DN 40	

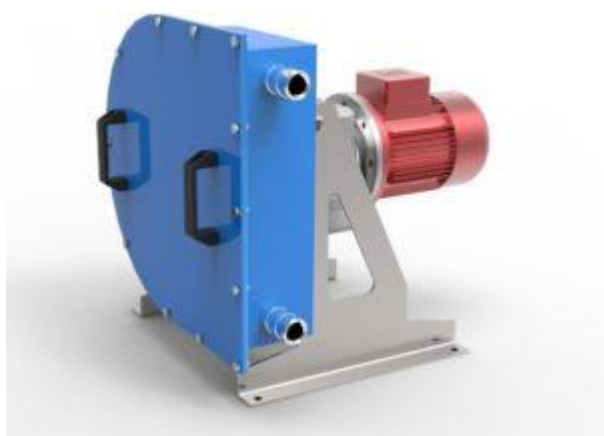
The dimensions are not binding and can vary without notice

General data of the Hose Carrier HCP 35 pump

TECHNICAL FEATURES:

Flow rate	Hose Carrier HCP 35 pump up to 3500 liters per hour
Pressure	up to 8 bar
Aspiration	up to 9.5 meters
Free passage	diameter 32 mm
Compact solid passage	diameter 5 mm
Mouths	hose connection DN 40 mm
Applied power	0.55 - 1.1 kW
Voltage	Mono - Three phase
Maximum dimensions	H 550 x 800 x 530
Weight	kg.
Tubular membrane	NR – NBR HYP – EPDM – SIL – (FDA)

THE EXCLUSIVE ADVANTAGES of the Hose Carrier HCP 35 pump::



- • Economical purchase and operation.
- • Ability to prime and run dry without damage.
- • Online reversibility.
- • High vacuum capacity up to 9.5 meters.
- • Absence of valves or seals, rotors and stators that wear out.
- • Simple on-site maintenance without piping removal.
- • No contact between mechanical parts and pumped fluid.
- • Pump body in treated steel or stainless steel.
- • Rotor with two rollers mounted on bearings lubricated for life.
- • Rollers with optional bearing protection.
- • Double body versions.
- • Direct flanged garmotor or with dedicated autonomous support.
- • Hose containment loops to extend its life.
- • Forced grease or Lubex lubrication system.
- • Pipe break control kit.



SCHIBUOLA LAURO

Products for Plant Automation

www.schibuola.com - info@schibuola.com

tel. 011-6991507 - 011-6502223 cell. 3355367761

