

Pressure Transmitter 981

for low pressures of various media



Application

Analogue pressure transmitter monitoring overpressure, vacuum or differential pressure of liquid and gaseous . also aggressive . media. The pressure measurement is carried out in difference to the atmospheric pressure (relative pressure).

Temperature range

Ambient temperature from . 20°C bis +85°C.
Temperature of media up to 85° C depending on material of pressure connection and diaphragm.

Diaphragm material

Depending on media: NBR, Silicone, FKM (Viton®), EPDM. Others upon request.

Pressure range

Customer specific range:
0 ÷ 300 mbar 981.1
-100 ÷ 0 mbar 981.2

A customised range of 100 mbar can be factory-set between -100 mbar ÷ +300 mbar

Maximum operating pressure

0 ÷ 500 mbar 981.1
-1000 ÷ 400 mbar 981.2

Linearity error

m±1% 981.1
m±2% 981.2

Response time

500 ms

Weight

Approx. 100 gr

Output signal

4 - 20 mA 2-wire
0 - 10 VDC 3-wire

Supply voltage

10 ÷ 30 VDC 4 ÷ 20 mA
18 ÷ 30 VDC 0 ÷ 10 V

Load

Max. 500 ÷ at 24 VDC 4 ÷ 20 mA
Min. 10 kΩ 0 ÷ 10 V

Current draw

m21 mA

Electrical connection

Circular connector M12, 4 poles, A-coding

Protection class

IP65 according to EN 60529

Conformity

RoHS Directive, EMC Directive

Mounting position

Mounting in any position

Accessories

Various mounting brackets

Pressure connection

Tube connection			Threaded connection			
5.0 mm	6.5 mm	10.0 mm	M10 x1	G1/8	G1/4	G1/2
PA	PA, PPS	PA, PPS	PA, PVDF, MS, V ₂ A	PA, PVDF, MS, V ₂ A	MS, V ₂ A	MS

PA = polyamide, PVDF = polyvinylidene fluoride, PPS = polyphenylsulfide, MS = brass, V₂A = stainless steel

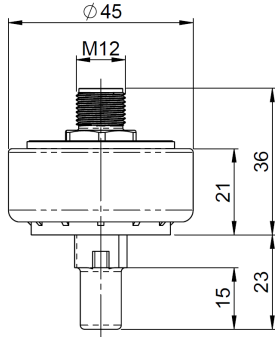
Upon request pressure connections of other sizes, other plastics or brass nickel-plated are available.

Viton® is a registered trademark of DuPont Dow Elastomers. Accuracy specifications according to EN 60770. Reference temperature: 23 °C

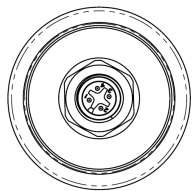
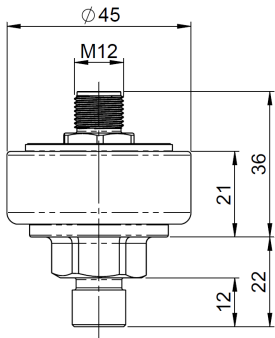
Pressure Transmitter 981

for low pressures of various media

981 with tube connection

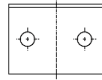
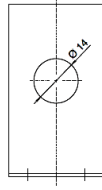


981 with threaded connection

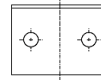
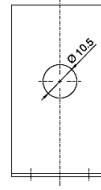


Mounting brackets

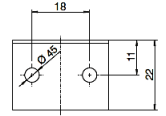
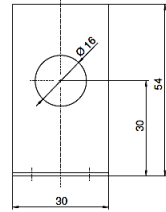
6403



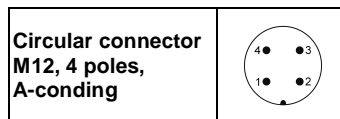
6404



6405



Connection assignments



3-wire

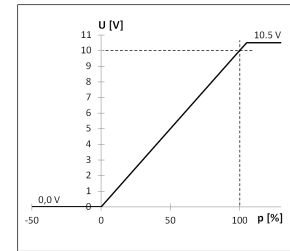
2	Output signal (05 10 V)
3	Ground (GND)
4	Not used
1	Supply voltage (18...30 VDC)

2-wire

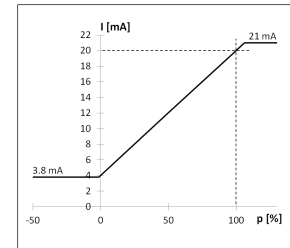
2	Not used
3	Output signal (45 20 mA)
4	Not used
1	Supply voltage (18...30 VDC)

Analog output signal

0 . 10 V



4 . 20 mA



SCHIBUOLA LAURO

Via Nizza 65 10125 Torino - Italy
info@schibuola.com www.schibuola.com

