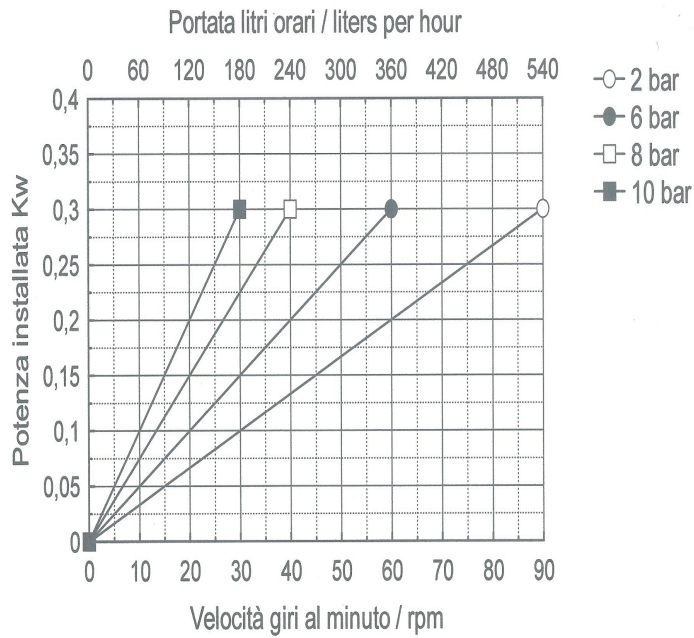


Hose Carrier HCP

PRODUCT INFORMATION

Hose Carrier HCP 15

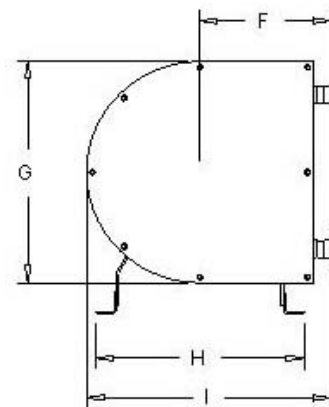
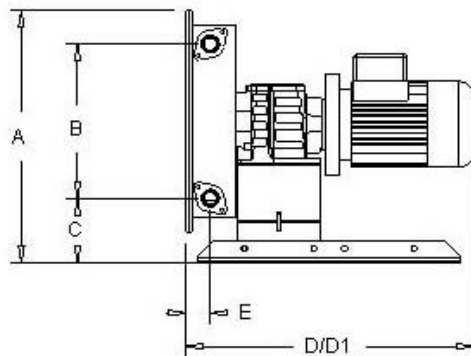


TECHNICAL DATA	
Delivery max	540 l/Hour
Head max*	10 bar
Vacuum	0,95 bar
Delivery per revolution	0,1 liters
Barb hose	DN 20
Free passage	15 mm
Weight	
Power Kw	0,09-0,37
Hose fiber reinforced available in different materials	NR
	NBR
	HYP
	EPDM
	NRA
Leakage sensor	Option
Cooling device	Option
Different connections	Option

VERSIONS AVAILABLE

- Variables with mechanical speed variator, from 1:5
- Variables with electronic inverter integrated IP 65
- Trailers for slow hand towing in site
- Electrical control panels aboard the machine

Note: in the presence of fluids particularly viscous, suspensions coarse solid, high delivery pressure, high temperatures, consider operate not more than 30 % of the maximum flow rate of the pump. *According to the transmission applied



DIMENSIONS

A	B	C	D	D1(VAR)	E	F	G	H	I	Out/In	Weight
355	216	90	393	540	33	178	310	284	334	DN20	

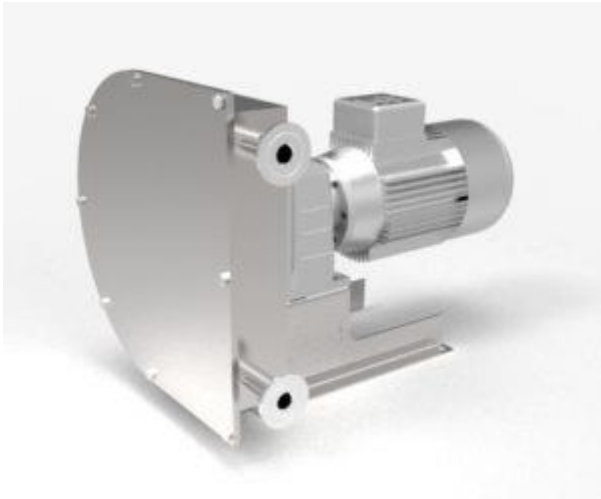
The dimensions are not binding and can vary without notice

General data of the Hose Carrier HCP 15 pump

TECHNICAL FEATURES:

Flow rate	Peristaltic pump Hose Carrier HCP 15 up to 540 liters per hour
Pressure	up to 10 bar
Aspiration	up to 9.5 meters
Free passage	diameter 15 mm
Compact solid passage	diameter 3 mm
Mouths	hose connection DN 20 mm
Applied power	0.37 kW
Voltage	Single - three phase
Maximum dimensions	H 355 x 540 x 334
Weight	kg.
Tubular membrane in	NR – NBR – HYP – EPDM – SIL – (FDA)

THE EXCLUSIVE ADVANTAGES of the Hose Carrier HCP 15 pump:



- • Economical purchase and operation.
- • Ability to prime and run dry without damage.
- • Online reversibility.
- • High vacuum capacity up to 9.5 meters.
- • Absence of valves or seals, rotors and stators that wear out.
- • Simple on-site maintenance without piping removal.
- • No contact between mechanical parts and pumped fluid.
- • Pump body in aluminum or treated steel or stainless steel.
- • Rotor with two rollers mounted on bearings lubricated for life.
- • Rollers with optional bearing protection.
- • Optional retractable roller device.
- • Double body versions.
- • Direct flanged gearmotor or with dedicated autonomous support.
- • Hose containment loops to extend its life.
- • Forced grease or Lubex lubrication system.
- • Pipe break control kit.



SCHIBUOLA LAURO

Products for Plant Automation

www.schibuola.com - info@schibuola.com

tel. 011-6991507 - 011-6502223 cell. 3355367761

