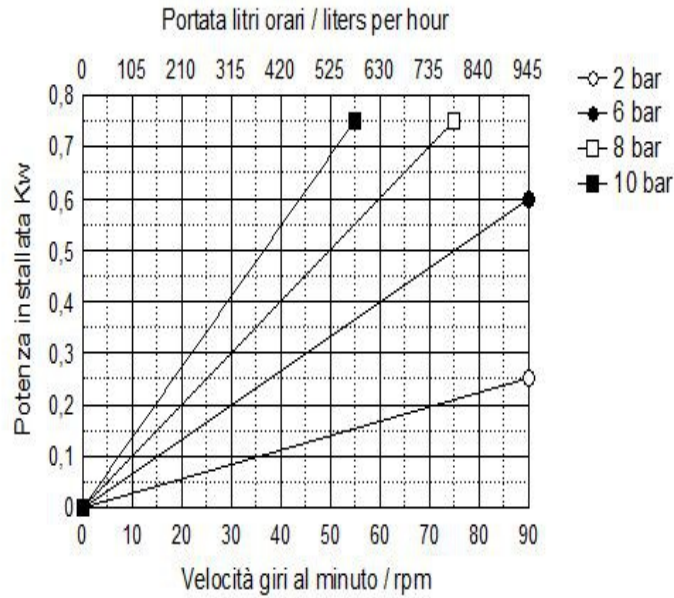


# Hose Carrier HCP

## PRODUCT INFORMATION

### Hose Carrier HCP 20



TECHNICAL DATA	
Delivery max	945 l/hour
Head max*	10 bar
Vacuum	0,95 bar
Delivery per revolution	0,175 liter
Barb hose	DN 25
Free passage	20 mm
Weight	
Power Kw	0,18-0,75
Hose fiber reinforced available in different materials	NR
	NBR
	HYP
	EPDM
	NRA
Leakage sensor	Option
Cooling device	Option
Different connections	Option

#### VERSIONS AVAILABLE

Variables with mechanical speed variator, from 1:5

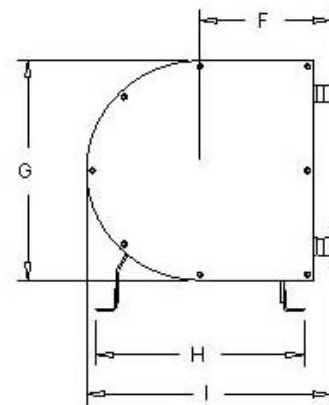
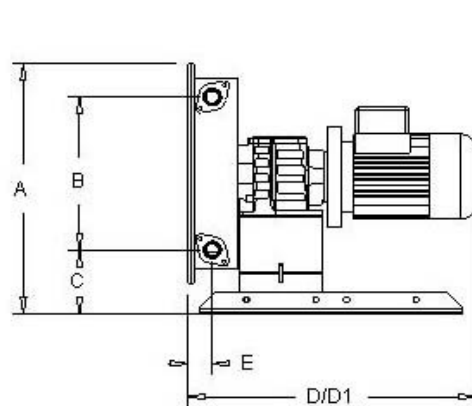
Variables with electronic inverter integrated IP 65

Trailers for slow hand towing in site

Electrical control panels aboard the machine

Note: in the presence of fluids particularly viscous, suspensions coarse solid, high delivery pressure, high temperatures, consider operate not more than 30 % of the maximum flow rate of the pump.

\*According to the transmission applied.



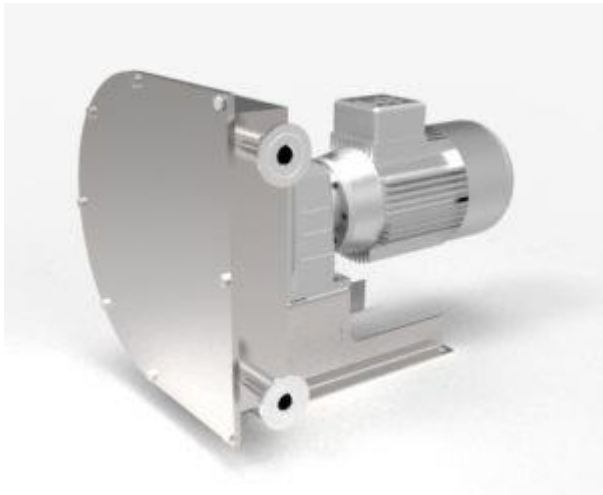
DIMENSIONS											
A	B	C	D	D1(VAR)	E	F	G	H	I	Out/In	Weight
355	216	90	393	540	33	178	310	284	334	DN25	

The dimensions are not binding and can vary without notice

## Hose Carrier HCP 20 - General pump data

TECHNICAL FEATURES:	peristaltic pump Hose Carrier HCP 20
Scope	up to 945 liters per hour
Pressure	up to 10 bar
Aspiration	up to 9.5 meters
Free passage Compact	diameter 20 mm
solids passage Ports	diameter 3 mm hose connection DN 25 mm
Applied power Voltage	0.37 - 0.75 kW Mono - Three phase
Maximum dimensions	H 355 x 540 x 334
Weight	kg.
Tubular membrane in	NR – NBR – HYP – EPDM – SIL – (FDA)

### THE EXCLUSIVE ADVANTAGES of the Hose Carrier HCP 20 pump:



- • Economical purchase and operation.
- • Ability to prime and run dry without damage.
- • Online reversibility.
- • High vacuum capacity up to 9.5 meters.
- • Absence of valves or seals, rotors and stators that wear out.
- • Simple on-site maintenance without piping removal.
- • No contact between mechanical parts and pumped fluid.
- • Pump body in treated steel or stainless steel.
- • Rotor with two rollers mounted on bearings lubricated for life.
- • Rollers with optional bearing protection.
- • Double body versions.
- • Direct flanged gearmotor or with dedicated autonomous support.
- • Hose containment loops to extend its life.
- • Forced grease or Lubex lubrication system.
- • Pipe break control kit.



**SCHIBUOLA LAURO**

Products for Plant Automation

[www.schibuola.com](http://www.schibuola.com) - [info@schibuola.com](mailto:info@schibuola.com)

tel. 011-6991507 - 011-6502223 cell. 3355367761

