

Hose Carrier metering pumps

Mechanical and electronic variable flow dosing machines.

The Hose Carrier variable flow dosing pumps are an ideal dispensing system because they offer precision, reliability and reduced maintenance. Our pumps are suitable for both automatic dosing in the production line and manual dispensing, for occasional needs. Our peristaltic dosing pumps are implemented with manual mechanical variators or more efficient versions enslaved by inverters with ample possibility of expansion for control. Dry running and safe and rapid self-priming allows for very high accuracy. Some typical applications of our Hose Carrier metering pumps include dosing of food beverages and chemicals, cosmetics or particularly delicate fluids. Wide compatibility guaranteed by the wide range of tubular membranes available in different materials and also with FDA certification. When using Hose Carrier metering pumps in major or minor applications in the industrial production line, you can be sure of accuracy, efficiency, convenience and operating life, at certain and modest costs.

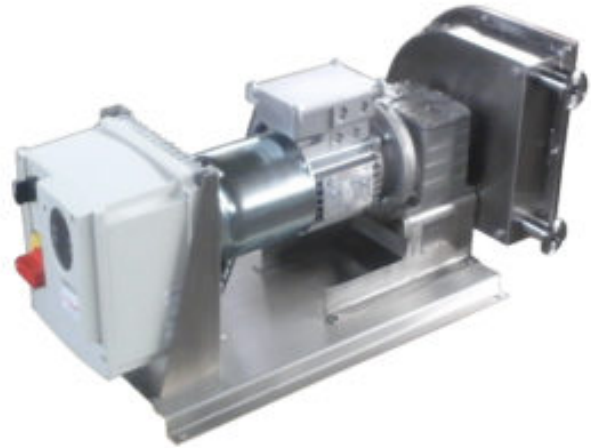
Dosing pumps with manual mechanical variators.

The integration of the pump with a manual mechanical variator is the simplest way to obtain the variable flow rate and thus making the dosage possible. The flow rate of the pump is changed by manually operating a handwheel that will act on the transmission. You will get a pump that can be adapted to the various situations of use, particularly insensitive to the nature of the environment because the functional parts are completely mechanical and sealed, dirt, dust, humidity and even some mistreatment in use will not be a problem. The mechanical variation system could be ideal if the machine is operated by general personnel and in particularly difficult environments.



Electronic variators or inverters.

Electronic frequency variators have opened up greater possibilities of use for Hose Carrier dosing pumps. By means of the inverter it is possible to obtain a much wider variation rate than the traditional mechanical system. The possibility of integrating the pump with control systems such as probes and sensors allows the creation of full cycle dosing units. By integrating the inverter to other control systems such as PLC, yes further increases the level of global automation of the plant or line. Energy efficiency and the consequent savings in management are also a significant advantage. Correct programming of the converter will also protect the machine from damage due to system or use anomalies. On the Hose Carrier electronic systems are implemented remotely or on board the machine, constantly updated, and possibly already programmed for operational needs.



SCHIBUOLA LAURO

Products for Plant Automation

www.schibuola.com - info@schibuola.com

tel. 011-6991507 - 011-6502223 cell. 3355367761

