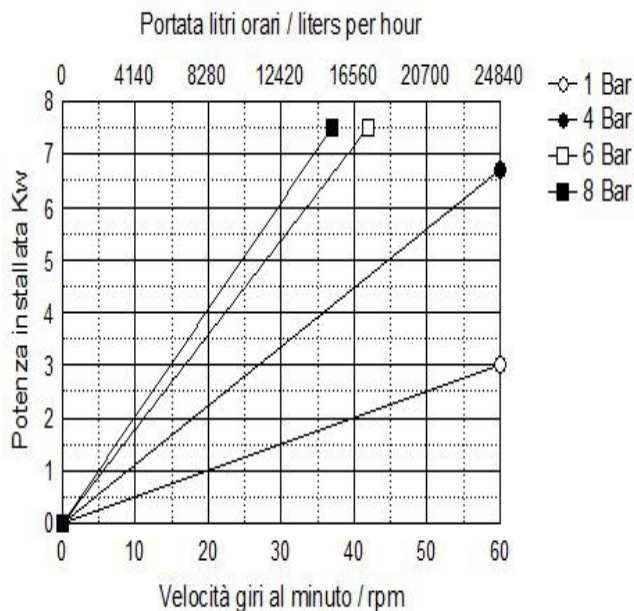


Hose Carrier HCP

PRODUCT INFORMATIONS

Hose Carrier HCP 65

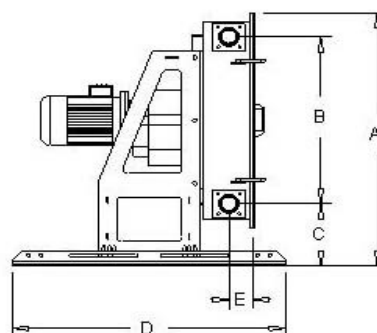
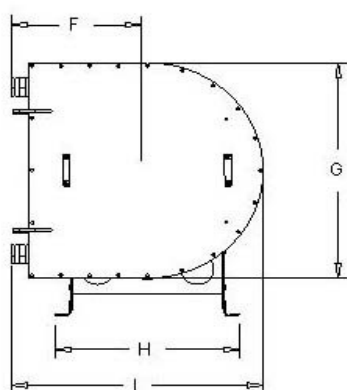


| TECHNICAL DATA | |
|--|--------------|
| Delivery max | 24800 L/hour |
| Head max* | 8bar |
| Vacuum | 0,95 bar |
| Delivery per revolution | 6,9 liters |
| Barb hose | DN 80 |
| Free passage | 65 mm |
| Weight | |
| Power Kw | 3,0-7,5 |
| Hose fiber reinforced available in different materials | NR |
| | NBR |
| | HYP |
| | EPDM |
| | NRA |
| Leakage sensor | Option |
| Cooling device | Option |
| Different connections | Option |

VERSIONS AVAILABLE

- Variables with mechanical speed variator, from 1:5
- Variable electronic inverter integrated IP 65
- Trailers for slow hand towing in site
- Electrical control panels aboard the machine

Note: in the presence of fluids particularly viscous, suspensions coarse solid, high delivery pressure, high temperatures, consider operate not more than 30 % of the maximum flow rate of the pump. *According to the transmission applied



| DIMENSIONS | | | | | | | | | | | |
|------------|-----|-----|------|---------|----|-----|-----|-----|-----|--------|--------|
| A | B | C | D | D1(VAR) | E | F | G | H | I | Out/in | Weight |
| 1082 | 712 | 266 | 1080 | 1100 | 95 | 515 | 920 | 732 | 100 | DN 80 | |

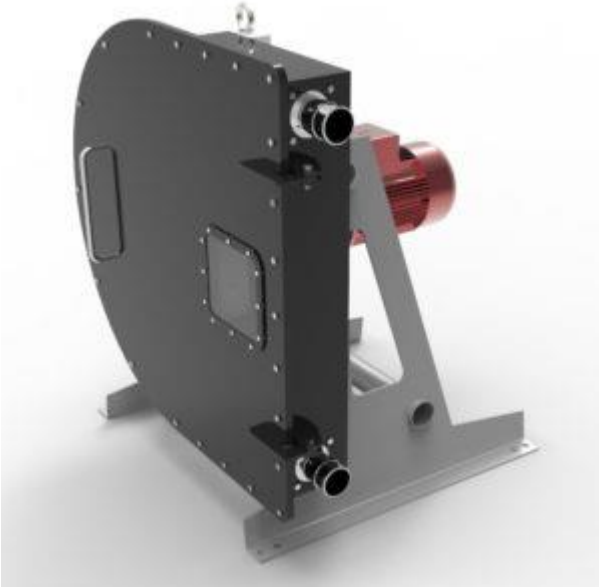
The dimensions are not binding and can vary without notice

General data of the Hose Carrier HCP 65 pump

TECHNICAL FEATURES:

| | |
|-----------------------|---|
| Flow rate | Hose Carrier HCP 65 pump up to 24800 liters per hour |
| Pressure | up to 8 bar |
| Aspiration | up to 9.5 meters |
| Free passage | diameter 65 mm |
| Compact solid passage | diameter 15 mm |
| Mouths | hose connection DN 80 mm |
| Applied power | 3.0 - 7.5 kW |
| Voltage | Three-phase |
| Maximum dimensions | H 1082 x 1100 x 1000 |
| Weight | kg. |
| Tubular membrane | NR – NBR HYP – EPDM – SIL – (FDA) |

THE EXCLUSIVE ADVANTAGES of the Hose Carrier HCP 65 pump:



- • Economical purchase and operation.
- • Ability to prime and run dry without damage.
- • Online reversibility.
- • High vacuum capacity up to 9.5 meters.
- • Absence of valves or seals, rotors and stators that wear out.
- • Simple on-site maintenance without piping removal.
- • No contact between mechanical parts and pumped fluid.
- • Pump body in treated steel or stainless steel.
- • Rotor with two rollers mounted on bearings lubricated for life.
- • Rollers with optional bearing protection.
- • Optional retractable roller device.
- • Double body versions.
- • Direct flanged gearmotor or with dedicated autonomous support.
- • Hose containment loops to extend its life.
- • Forced grease or Lubex lubrication system.
- • Pipe break control kit.
- • Mechanical or electrical vacuum device for dense fluids.

 **SCHIBUOLA LAURO**

Products for Plant Automation

www.schibuola.com - info@schibuola.com

tel. 011-6991507 - 011-6502223 cell. 3355367761

