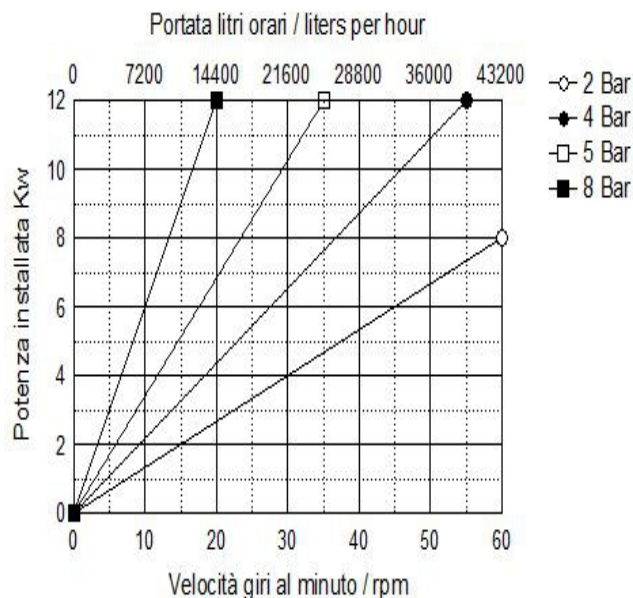


# Hose Carrier HCP

## PRODUCT INFORMATION

### Hose Carrier HCP 80



TECHNICAL DATA	
Delivery max	43200 L/Hour
Head max*	8 bar
Vacuum	0,95 bar
Delivery per revolution	12 liters
Barb hose	DN 80
Free passage	80 mm
Weight	
Power Kw	4,0-11
Hose fiber reinforced available in different materials	NR
	NBR
	HYP
	EPDM
	NRA
Leakage sensor	Option
Cooling device	Option
Different connections	Option

#### VERSIONS AVAILABLE

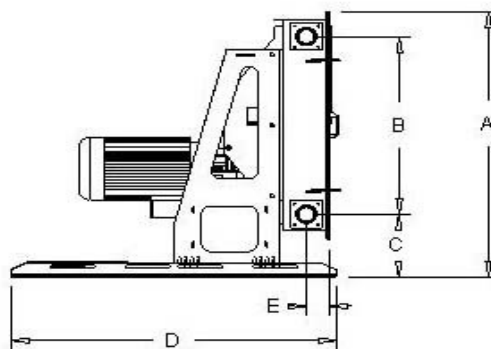
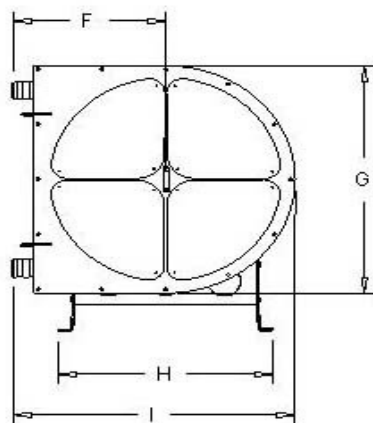
Variables with mechanical speed variator, from 1:5

Variable electronic inverter integrated IP 65

Trailers for slow hand towing in site

Electrical control panels aboard the machine

Note: in the presence of fluids particularly viscous, suspensions coarse solid, high delivery pressure, high temperatures, consider operate not more than 30 % of the maximum flow rate of the pump. \*According to the transmission applied



DIMENSIONS											
A	B	C	D	D1(VAR)	E	F	G	H	I	Out/in	Weight
1445	968	342	1560	-	113	728	1240	1022	1348	DN 100	

The dimensions are not binding and can vary without notice

# General data of the Hose Carrier HCP 80 pump

## TECHNICAL FEATURES:

Flow rate	Hose Carrier HCP 80 pump up to 43200 liters per hour
Pressure	up to 8 bar
Aspiration	up to 9.5 meters
Free passage	diameter 80 mm
Compact solid passage	diameter 20 mm
Mouths	hose connection DN 80 mm
Applied power	4.0 - 11 kW
Voltage	Three-phase
Maximum dimensions	H 1445 x 1560 x 1348
Weight	kg.
Tubular membrane	NR – NBR HYP – EPDM – SIL – (FDA)

## THE EXCLUSIVE ADVANTAGES of the Hose Carrier HCP 80 pump:



- • Economical purchase and operation.
- • Ability to prime and run dry without damage.
- • Online reversibility.
- • High vacuum capacity up to 9.5 meters.
- • Absence of valves or seals, rotors and stators that wear out.
- • Simple on-site maintenance without piping removal.
- • No contact between mechanical parts and pumped fluid.
- • Pump body in treated steel or stainless steel.
- • Rotor with two rollers mounted on bearings lubricated for life.
- • Rollers with optional bearing protection.
- • Optional retractable roller device.
- • Double body versions.
- • Direct flanged garmotor or with dedicated autonomous support.
- • Hose containment loops to extend its life.
- • Forced grease or Lubex lubrication system.
- • Pipe break control kit.
- • Mechanical or electrical vacuum device for dense fluids.

 **SCHIBUOLA LAURO**

Products for Plant Automation

[www.schibuola.com](http://www.schibuola.com) - [info@schibuola.com](mailto:info@schibuola.com)

tel. 011-6991507 - 011-6502223 cell. 3355367761

