

Catalogo Prodotti Inox

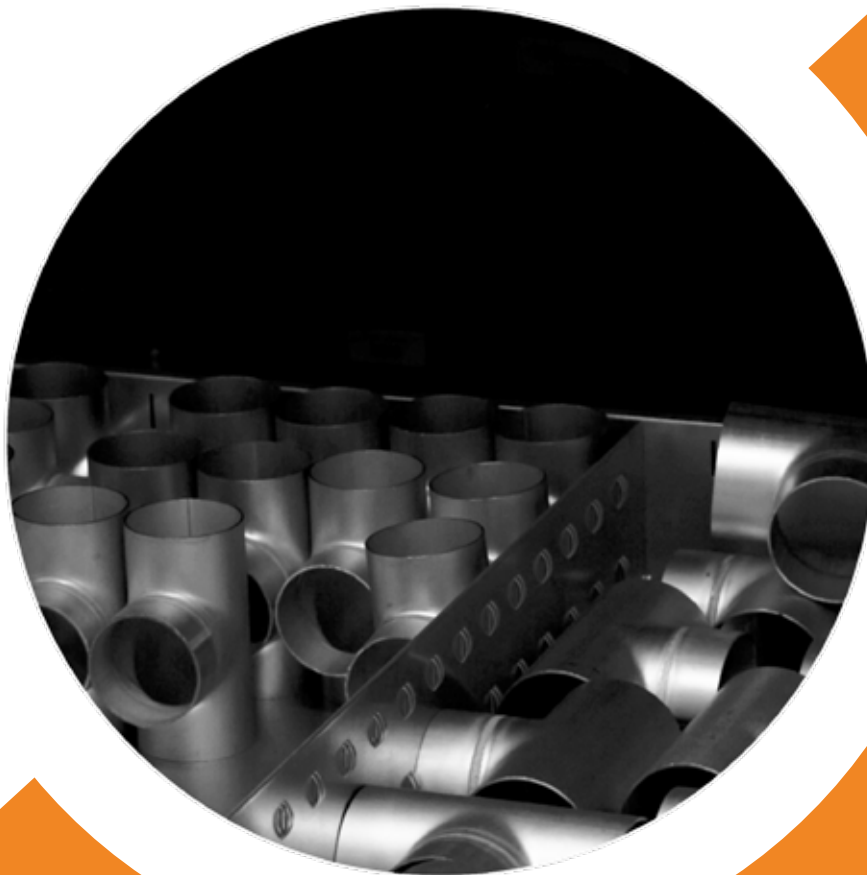
Garantire efficienza: una scelta di qualità

Leadercom Srl

Forniture industriali è una realtà nata per essere competitiva, e strutturata appositamente per crescere: secondo le richieste del mercato, in linea con le innovazioni tecnologiche.

Per investire in termini di qualità ed efficienza abbiamo implementato un sistema di magazzino verticale: grazie all'utilizzo intensivo delle superfici, è infatti possibile stoccare una quantità superiore di merci rispetto ai magazzini tradizionali.

Il nostro punto fermo è e sarà sempre la soddisfazione della clientela: ci impegniamo e aggiorniamo costantemente per garantire un servizio puntuale ed efficiente.



DIN 11864
DIN 11853

DIN 11851

SMS

CLAMP

ISO
Saldare

GAS
massello

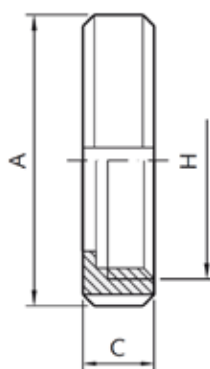
GAS
microfuso

Valvole e
Accessori

FLANGE

Sistemi di
Lavaggio

DIN 11851

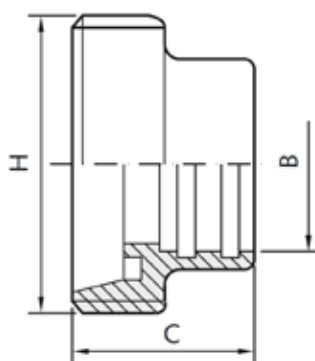
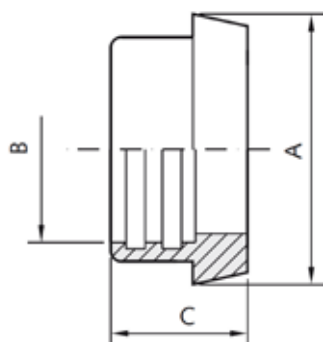
RX260**Girella DIN****AISI 304/316**

DIN	H mm	A mm	C mm
10	28	38	18
15	34	44	18
20	44	54	20
25	52	63	21
32	58	70	21
40	65	78	21
50	78	92	22
60	85	99	22
65	95	112	25
80	110	127	29
90	120	138	30
100	130	148	31
125	160	178	34
150	190	210	40

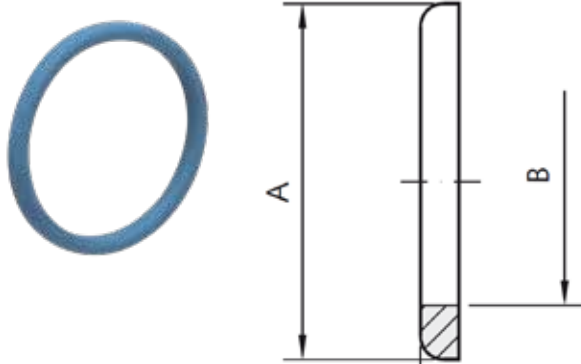
DIN 11851

Raccordo DIN femmina a mandrinare**RX220**

DIN	H mm	B mm	C mm
10	28	12,2	12
15	34	18,2	18
20	44	22,2	22
25	52	28,2	29
32	58	34,2	32
40	65	40,2	33
50	78	52,2	35
60	85	60,3	37
65	95	70,3	40
80	110	85,3	45
90	118	89,2	45
100	130	101,9	54
100	130	104,3	54

**AISI 304/316****RX230****Raccordo DIN maschio a mandrinare****AISI 304/316**

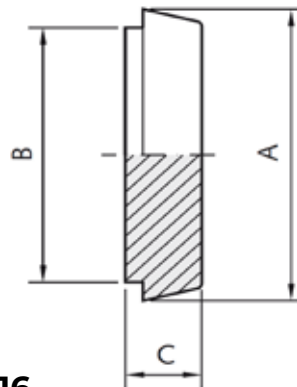
DIN	A mm	B mm	C mm
10	22	12,2	17
15	28	18,2	17
20	36	22,2	18
25	44	28,2	22
32	50	34,2	25
40	56	40,2	26
50	68	52,2	28
60	76	60,3	30
65	86	70,3	32
80	100	85,3	37
90	110	89,2	35
100	121	101,9	44
100	121	104,3	44

RX277**Guarnizione per raccordo DIN in SILICONE EPDM-FKM-NBR-PTFE**

DN	A mm	B mm	C mm
10	20	12	4,5
15	26	18	4,5
20	33	23	4,5
25	40	30	5
32	46	36	5
40	52	42	5
50	64	54	5
60	72	62	5
65	81	71	5
80	95	85	5
90	102	92	6
100	114	104	6
150	167	155	7

Raccordo maschio cieco DIN**RX270**

DN	A mm	B mm	C mm
10	22	18	9
15	28	24	9
20	36	30	11
25	44	35	13
32	50	41	13
40	56	48	13
50	68	61	14
60	76	69	15
65	86	79	16
80	100	93	16
90	121	114	20
100	150	137	22
150	176	163	24

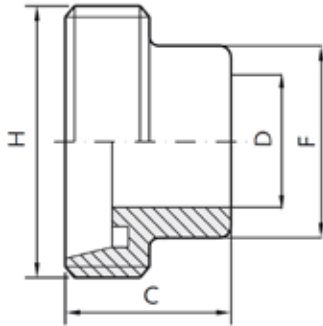
**AISI 304/316****RX271****Raccordo femmina cieco DIN**

DN
10
15
20
25
32
40
50
60
65
80
90
100
150

AISI 304/316

RX240**Raccordo DIN femmina a saldare grosso spessore**

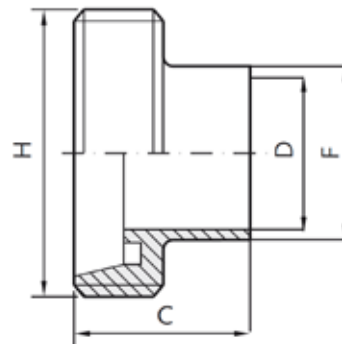
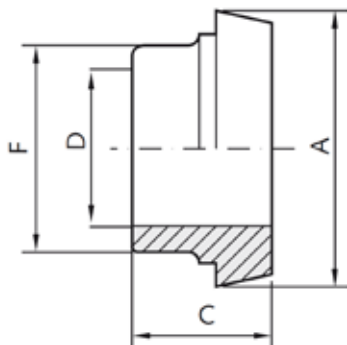
DIN 11851

**AISI 304/316**

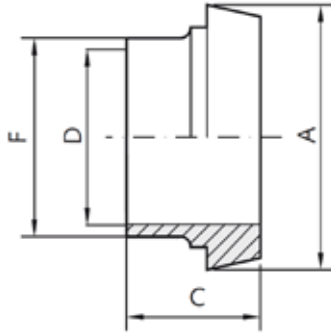
DN	H mm	F mm	D mm	C mm
10	28	18	10	21
15	34	24	16	21
20	44	29	20	24
25	52	35	26	29
32	58	41	32	32
40	65	48	38	33
50	78	61	50	35
60	85	68	58	37
65	95	79	66	40
80	110	93	81	45
100	130	114	98	54

Raccordo DIN femmina a saldare pari tubo**RX4043**

DN	H mm	F mm	D mm	C mm
10	28	12/13	9	21
15	34	18/19	15	21
20	44	22/23	19	24
25	52	28/29	25	29
32	58	34/35	31	32
40	65	40/41	37	33
50	78	52/53	49	35
65	95	70	66	40
80	110	85	81	45
100	130	101,6	97,6	54
100	130	104	100	54
125	160	129	125	46
150	190	154	150	50

**AISI 304/316****RX250****Raccordo DIN maschio a saldare grosso spessore****AISI 304/316**

DN	F mm	D mm	A mm	C mm
10	18	9	22	17
15	24	15	28	17
20	29	20	36	18
25	35	26	44	22
32	41	32	50	25
40	48	38	56	26
50	61	50	68	28
60	68	58	76	30
65	79	66	86	32
80	93	81	100	36
100	114	98	121	44

RX4063**Raccordo DIN maschio a saldare pari tubo**

DN	F mm	D mm	A mm	C mm
10	12/13	9	22	17
15	18/19	15	28	17
20	22/23	19	36	18
25	28/29	25	44	22
32	34/35	31	50	25
40	40/41	37	56	26
50	52/53	49	68	28
65	70	66	86	32
80	85	81	100	37
100	101,6	97,6	121	44
100	104	100	121	44
125	129	125	150	34
150	154	150	176	37

AISI 304/316**Raccordo maschio ridotto a saldare pari tubo****Raccordo maschio ridotto MA****RX4065****RX235****AISI 304/316****DN**

32/25 40/25 40/32 50/25 50/32 50/40 65/40 65/50 80/65 100/80

**RX4045
RX236****Raccordo femmina ridotta a saldare pari tubo****Raccordo femmina ridotta MA****AISI 304/316****DN**

32/25 40/25 40/32 50/25 50/32 50/40 65/40 65/50 80/65 100/80

RX221**Raccordo maschio con tronchetto GAS**

DN	A
10	3/8"
15	1/2"
20	3/4"
25	1"
32	1"1/4
40	1"1/2
50	2"
65	2"1/2
80	3"
100	4"

AISI 304/316

DIN 11851

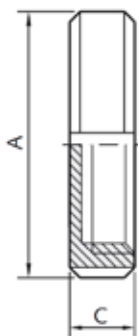
Raccordo femmina con tronchetto GAS**RX222**

DN	A
10	3/8"
15	1/2"
20	3/4"
25	1"
32	1"1/4
40	1"1/2
50	2"
65	2"1/2
80	3"
100	4"

AISI 304/316**RX223****Raccordo femmina con manicotto GAS**

DN	A
10	3/8"
15	1/2"
20	3/4"
25	1"
32	1"1/4
40	1"1/2
50	2"
65	2"1/2
80	3"
100	4"

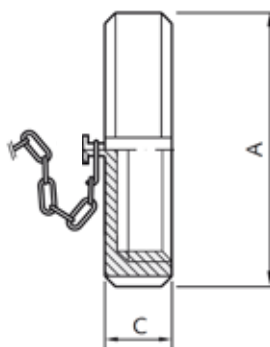
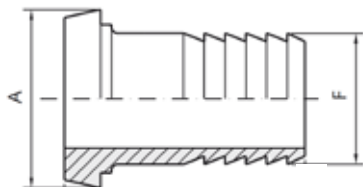
AISI 304/316

RX265**Girella cieca DIN con sede conica****AISI 304**

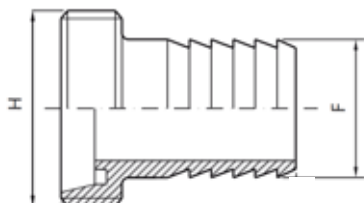
DN	A mm	C mm
10	38	18
15	44	18
20	54	21
25	63	21
25	63	21
32	70	21
40	78	21
50	92	22
60	99	22
65	112	25
80	127	29
100	148	31

Girella cieca DIN con catenella e guarnizione**RX266**

DN	A mm	C mm
15	44	18
20	54	21
25	63	21
32	70	21
40	78	21
50	92	22
60	99	22
65	112	25
80	127	29
100	148	31
125	178	34

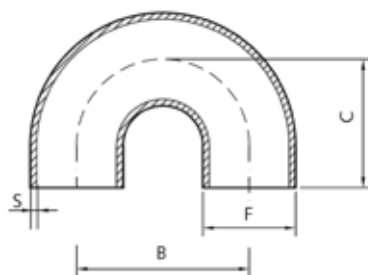
**AISI 304****RX285****Raccordo DIN maschio con portagomma****AISI 304/316**

DN	A mm	F mm
20	36	25
25	44	30
32	50	35
40	56	40
50	58	52
60	76	60
65	86	70
80	100	80
100	121	100

RX4240**Raccordo DIN femmina con portagomma**

DIN	F mm	H mm
20	25	44
25	30	52
32	35	58
40	40	65
50	52	78
60	60	85
65	70	95
80	80	110
100	100	130

DIN 11851

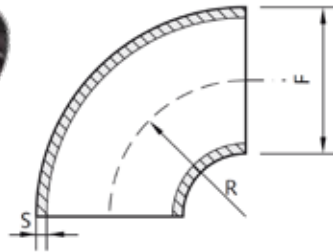
Chiave universale stampata per raccordi**RX26001****RX511****Curva 180° a mandrinare lucida**

DN	F mm	S mm	B mm	C mm
25	28	1,5	100	70
32	34	1,5	110	78
40	40	1,5	120	90
50	52	1,5	140	100
60	60	1,5	150	110
65	70	2	160	110
80	85	2	190	130
100	104	2	200	150

AISI 316

RX503

Curva 90° a saldare lucida



DN	F mm	S mm	R mm
10	12	1,5	26
15	18	1,5	35
20	22	1,5	40
25	28	1,5	50
32	34	1,5	55
40	40	1,5	60
50	52	1,5	70
60	60	1,5	75
65	70	2	80
80	85	2	90
100	101,6	2	110
100	104	2	100
125	129	2	188
150	154	2	225

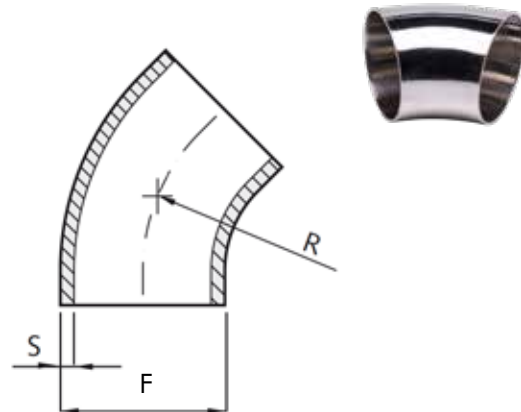
AISI 304/316

Curva 45° a saldare lucida

RX502

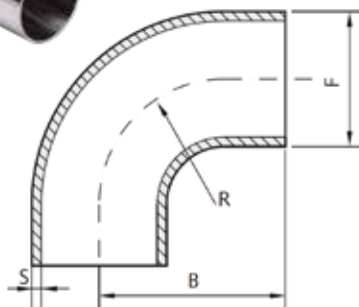
DN	F mm	S mm	R mm
25	28	1,5	50
32	34	1,5	55
40	40	1,5	60
50	52	1,5	70
60	60	1,5	75
65	70	2	80
80	85	2	90
100	101,6	2	110
100	104	2	100
125	129	2	188

AISI 316



RX510

Curva 90° a mandrinare lucida

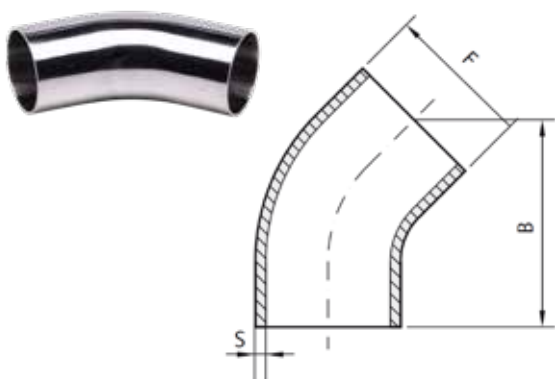


AISI 304/316

DN	F mm	S mm	R mm	B mm
10	12	1,5	26	38
15	18	1,5	35	47
20	22	1,5	40	52
25	28	1,5	50	70
32	34	1,5	55	78
40	40	1,5	60	85
50	52	1,5	70	97
60	60	1,5	75	110
65	70	2	80	110
80	85	2	90	118
100	101,6	2	110	150
100	104	2	100	140

RX512

Curva 45° a mandrinare lucida



AISI 316

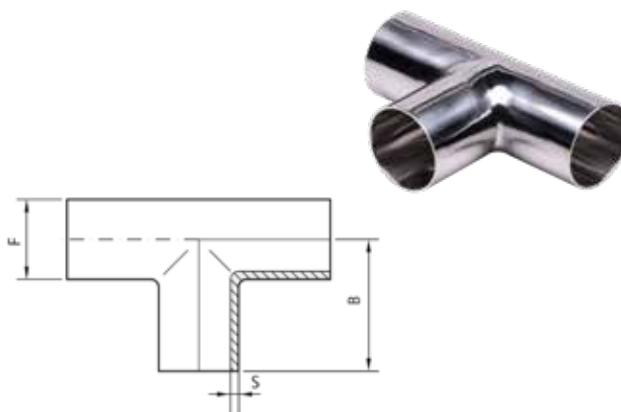
DN	F mm	S mm	B mm
15	18	1,5	60
20	22	1,5	65
25	28	1,5	73
32	34	1,5	83
40	40	1,5	89
50	52	1,5	103
65	70	2	108
80	85	2	120
100	101,6	2	151
100	104	2	151

DIN 11851

DN	F mm	S mm	B mm
15	18	1,5	35
20	22	1,5	40
25	28	1,5	50
32	34	1,5	55
40	40	1,5	60
50	52	1,5	70
60	60	1,5	75
65	70	2	80
80	85	2	90
100	101,6	2	100
100	104	2	100
125	129	2	124
150	154	2	143
200	204	2	178

TEE a mandrinare lucido

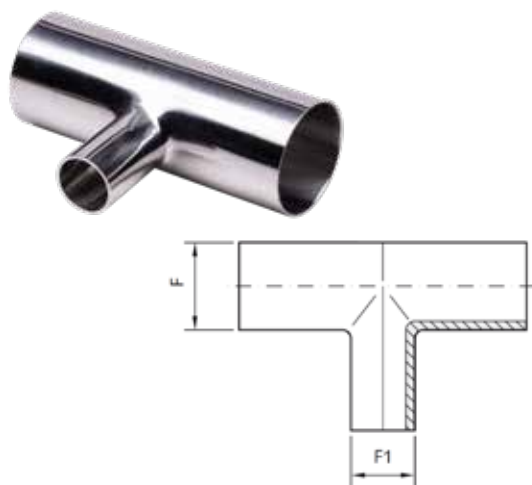
RX610



AISI 304/316

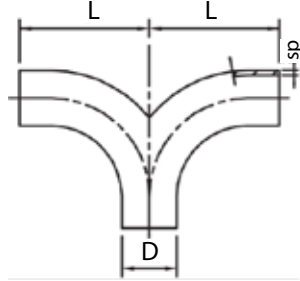
RX611

TEE ridotto a mandrinare lucido



AISI 316

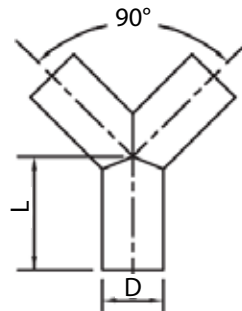
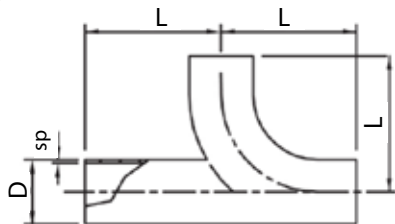
DN	F mm	F1 mm	DN	F mm	F1 mm
20-15	22	18	80-40	85	40
25-15	22	18	80-50	85	52
25-20	28	22	80-65	85	70
32-25	34	28	100-40	101	40
40-25	40	28	100-50	101	52
40-32	40	34	100-65	101	70
50-25	52	28	100-80	101	85
50-32	52	34	104-25	104	28
50-40	52	40	104-32	104	34
65-25	70	28	104-40	104	40
65-32	70	34	104-50	104	52
65-40	70	40	104-65	104	70
65-50	70	52	104-80	104	85

RX532**Curva doppia lucida**

DN	D x SP mm	L mm
15	18 x 1,5	47
20	22 x 1,5	52
25	28 x 1,5	70
32	34 x 1,5	80
40	40 x 1,5	85
50	52 x 1,5	97
60	60 x 1,5	110
65	70 x 2	110
80	85 x 2	123
100	101,6 x 2	150
100	104 x 2	140

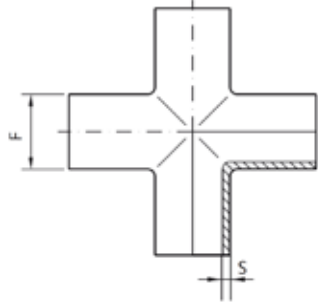
AISI 316**Raccordo Y lucido****RX801**

DN	D x SP mm	L mm
10	12 x 1,5	35
15	18 x 1,5	40
20	22 x 1,5	45
25	28 x 1,5	50
32	34 x 1,5	56
40	40 x 1,5	67
50	52 x 1,5	72
60	60 x 1,5	75
65	70 x 2	85
80	85 x 2	98
100	101,6 x 2	110
100	104 x 2	110
125	129 x 2	200
150	154 x 2	250

**AISI 316****RX518****Curva con pezzo AT lucida**

DN	D x SP mm	L mm
15	18 x 1,5	47
20	22 x 1,5	52
25	28 x 1,5	70
32	34 x 1,5	80
40	40 x 1,5	85
50	52 x 1,5	97
60	60 x 1,5	110
65	70 x 2	110
80	85 x 2	123
100	101,6 x 2	150
100	104 x 2	140

AISI 316

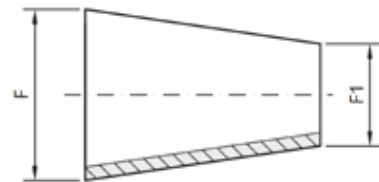
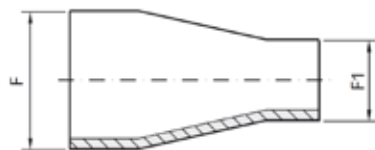
RX606**Croce a mandrinare lucida****AISI 316**

DN	F mm	S mm
15	18	1,5
20	22	1,5
25	28	1,5
32	34	1,5
40	40	1,5
50	52	1,5
65	70	2
80	85	2
100	101,6	2
100	104	2

DIN 11851

Riduzione concentrica a saldare lucida**RX651**

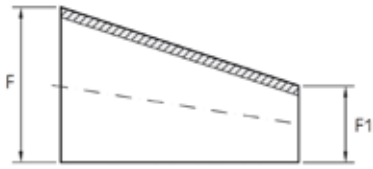
F mm	F1 mm	F mm	F1 mm	F mm	F1 mm
18	12	40	34	85	70
22	12	52	22	104	40
22	18	52	28	104	52
28	18	52	34	104	70
28	22	52	40	104	85
34	18	70	28	129	52
34	22	70	34	129	70
34	28	70	40	129	85
40	18	70	52	129	104
40	22	85	40	154	104
40	28	85	52	154	129

**AISI 316****RX660****Riduzione concentrica a mandrinare lucida****AISI 304/316**

F DN	F1 DN	F DN	F1 DN
15	10	50	40
20	10	65	25
20	15	65	32
25	15	65	40
25	20	65	50
32	20	80	40
32	25	80	50
40	20	80	65
40	25	100	40
40	32	100	50
50	25	100	65
50	32	100	80

RX666

Riduzione eccentrica a saldare lucida



AISI 316

F mm	F1 mm
18	12
22	12
22	18
28	18
28	22
34	18
34	22
34	28
40	22
40	28
40	34

F mm	F1 mm
52	22
52	28
52	34
52	40
70	28
70	34
70	40
70	52
85	40
85	52
85	70

F mm	F1 mm
104	40
104	52
104	70
104	85
129	52
129	70
129	85
129	104
154	104
154	129

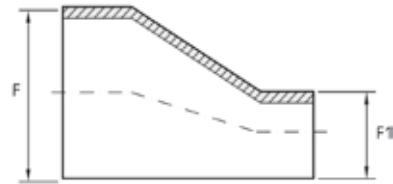
Riduzione eccentrica a mandrinare lucida

RX655

F DN	F1 DN
15	10
20	10
20	15
25	15
25	20
32	20
32	25
40	20
40	25
40	32

F DN	F1 DN
50	25
50	32
50	40
65	25
65	32
65	40
65	50
80	40
80	50
80	65

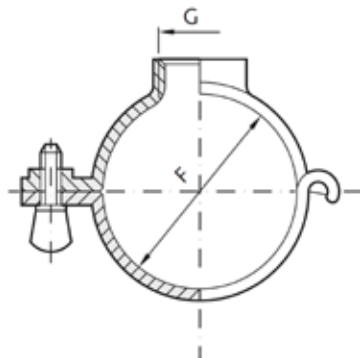
F DN	F1 DN
100	40
100	50
100	65
100	80
104	40
104	50
104	65
104	80



AISI 316

RX740

Reggitubo a cerniera tipo "pesante" con attacco filettato GAS



AISI 304

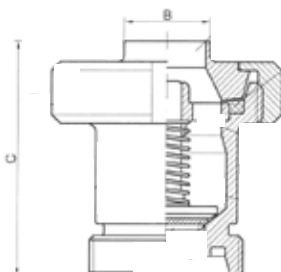
DN	F mm	G mm
15	18	1/4
20	22	3/8
25	28	1/2
32	34	1/2
40	40	1/2
50	52	1/2
60	60	1/2
65	70	1/2
80	85	1/2
100	101/104	1/2
125	129	1/2

RX740**Reggitubo 2 pezzi con manicotto****AISI 304**

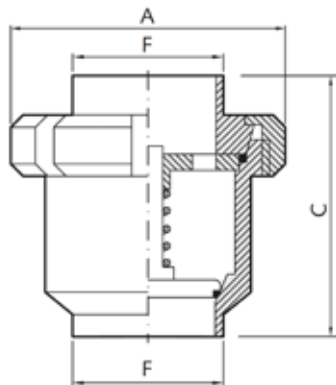
DN	F mm	G mm
150	154	1/2
200	204	1/2
250	254	1/2
300	304	1/2

DIN 11851

DN	F mm
15	18
20	22
25	28
32	34
40	40
50	52
60	60
65	70
80	85
100	104
125	129
150	154
200	204

Reggitubo 2 pezzi con gambo**RX740****AISI 304****RX3201****Valvola di ritegno con attacchi DIN femmina - saldare****AISI 316**

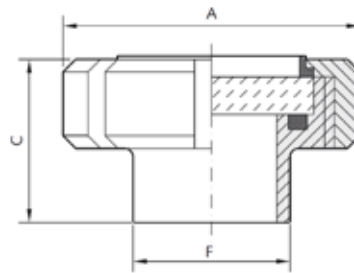
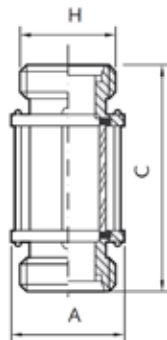
DN	B mm	C mm
25	29	80
32	35	83
40	41	88
50	53	95
65	70	111
80	85	145
100	101,6	158

RX3203**Valvola di ritegno con attacchi saldare - saldare****AISI 316**

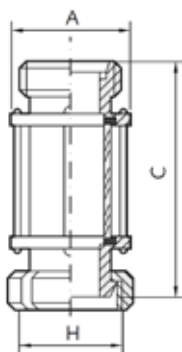
DN	F mm	A mm	C mm
25	28	78	87
32	34	78	94
40	40	92	103
50	52	112	106
65	70	127	127
80	85	148	137
100	101,6	178	158

Specola piana con attacco DIN a saldare**RX275**

DN	F mm	A mm	C mm
25	28	63	38
32	34	70	40
40	40	78	40
50	52	92	43
65	70	112	48
80	85	127	53
100	104	148	65

AISI 304/316**RX3243****Specola di linea con attacchi DIN femmina - femmina con protezione inox****AISI 304/316**

DN	H mm	A mm	C mm
25	52	56	157
32	58	65	157
40	65	70	157
50	78	85	163
60	85	95	157
65	95	100	163
80	110	125	173
100	130	152	173
125	160	-	-

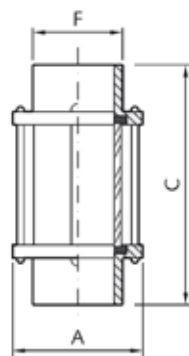
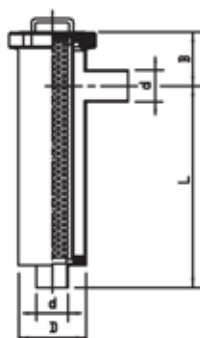
RX3245**Specola di linea con attacchi DIN
femmina - maschio con protezione inox****AISI 304/316**

DN	H mm	A mm	C mm
25	52	56	160
32	58	65	160
40	65	70	160
50	78	85	163
60	85	93	173
65	95	100	163
80	110	125	173
100	130	152	173
125	160	-	-

DIN 11851

**Specola di linea con attacchi
saldare - saldare con protezione inox****RX3247**

DN	F mm	A mm	C mm
25	28	56	157
22	34	65	157
40	40	70	157
50	52	85	157
60	60	95	157
65	70	100	163
80	85	125	173
100	101,6	152	171
125	129,0	-	-

AISI 304/316**RX3250****Filtro di linea 90° attacchi DIN SA/SA****RX3251****Filtro di linea 90° attacchi DIN FEMM/FEMM****RX3252****Filtro di linea 90° attacchi DIN FEMM/SA**

DN	L	Dxd	B
25	260	70x28	110
32	260	70x34	110
40	260	70x40	110
50	260	70x52	110
65	377	104x70	123
80	377	104x85	123
100	506	129x101,6	154
100	506	129x104	154

Leadercom Srl

Via Edison Volta, 25/A
43125 Parma PR

Tel: 0521 989313
E-mail: info@leadercom.it
www.leadercom.it

Progetto grafico:

Webscriptum />

Via Nicolò Copernico 18/b
42124 Reggio Emilia RE
www.webscriptum.com

Tutti i diritti sono riservati. All rights reserved.

Nessuna parte di questo catalogo può essere riprodotta o trasmessa in qualsiasi forma o mezzo,
senza l'autorizzazione scritta dei titolari del copyright.