



SERIE BR/BRT
VALVOLA
A FARFALLA



DATI TECNICI

Sede in silicone alimentare, EPDM o PTFE con nucleo silicónico o in EPDM	Altre finiture : su richiesta
Semiflange e disco in AISI 316L	Vasta gamma di accessori
Facile da installare, facile da pulire soprattutto nei modelli SR, CR e DR	Tutte le valvole possono essere equipaggiate con attuatori, pneumatici, finecorsa e elettrovalvole
Serie standard DN 100 - DN 400	
Finitura standard : interna lucidata a specchio, esterna satinata	

I componenti e le guarnizioni delle valvole in Silicone o in EPDM non sono intercambiabili con quelli in PTFE

MOMENTO TORCENTE TORQUE (NM)

DN	100	150	200	250	300	350	400
TORQUE Guarniz. Silicone Nm	30	45	50	100	160	185	200
TORQUE PTFE Guarniz. Nm	40	50	95	120	175	200	220

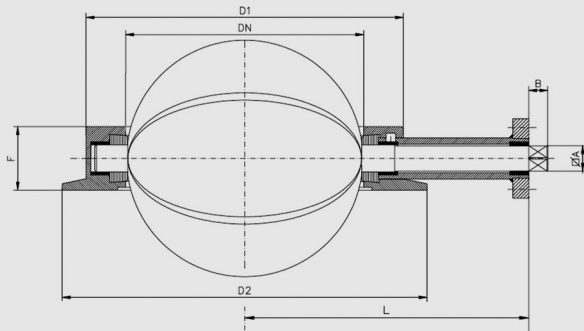
TOP FLANGE FOR ACTUATOR

DN	100	150	200	250	300	350	400
ISO 5211 Standard	F05	F05	F05	F05	F07	F10	F10

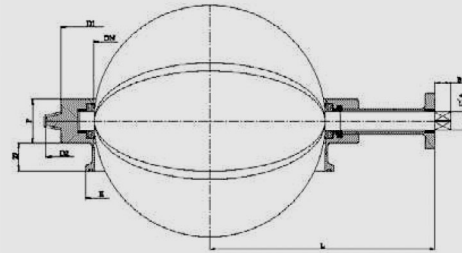
MATERIALI

Descrizione	Materiale	Nr
FLANGIA SUPERIORE	EN 1.4404/316L	1
FLANGIA INFERIORE	EN 1.4404/316L	1
FARFALLA	EN 1.4404/316L	1
TENUTA	SILICONE FDA 177.2600 P.T.F.E.	1
SUPPORTO	EN 1.4403/304	1
BOCCOLE	P.T.F.E.	3

Serie BR

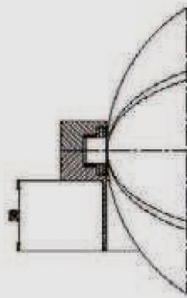


Serie BRT

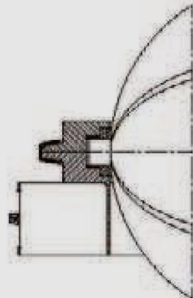

DIMENSIONI

DN		D1	D2	F	L	A	B
mm	inch						
100	4"	150	180	36	131	11x11	16
150	6"	200	230	40	177	11x11	16
200	8"	250	280	40	202	11x11	16
250	10"	300	330	44	227	14x14	16
300	12"	350	380	46	254	17x17	19
350	14"	400	430	46	291	22x22	24
400	16"	450	500	50	316	22x22	24

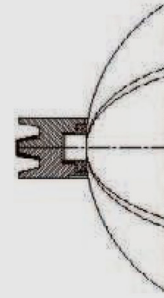
TIPI DI CONNESSIONE



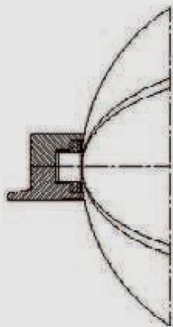
SX



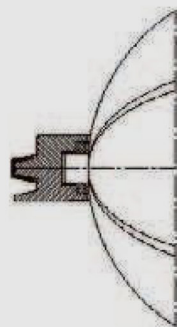
SR



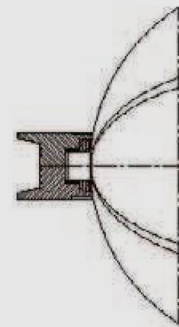
DC



CX



CR



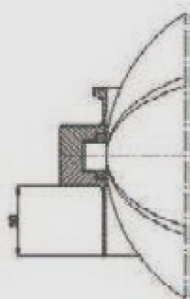
DR

MATERIALI

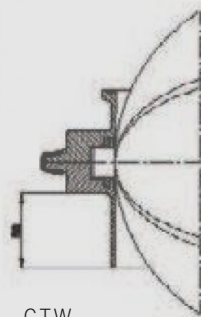
Descrizione	Material	Nr
FLANGIA SUPERIORE	EN 1.4404/316L	1
FLANGIA INFERIORE	EN 1.4404/316L	1
FARFALLA	EN 1.4404/316L	1
TENUTA	SILICONE FDA 177.2600 P.T.F.E.	1
SUPPORTO	EN 1.4403/304	1
BOCCOLE	P.T.F.E.	3

DIMENSIONI

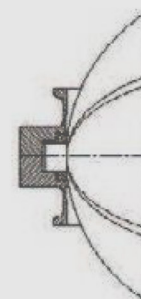
DN		D1	D2	A	B	E	F	L
mm	inch							
100	4"	150	180	11x11	16	119	36	131
150	6"	200	230	11x11	16	167	40	177
200	8"	250	280	11x11	16	217.7	40	202
250	10"	300	330	14x14	16	268.5	44	227
300	12"	350	380	17x17	19	319.3	46	254
350	14"	400	430	22x22	24		46	291
400	16"	450	500	22x22	24		50	316

TIPI DI CONNESSIONE


CXTW



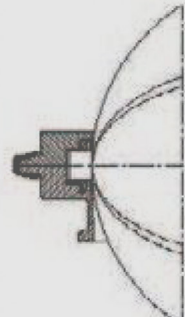
CTW



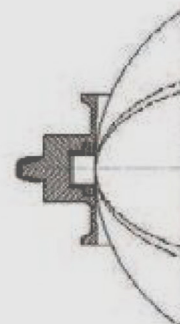
DCT



CXT



CRT



DRT