



SERIE BV/BVT
VALVOLA
A FARFALLA



DATI TECNICI

| | |
|--|---|
| Sede in silicone alimentare, EPDM o PTFE con nucleo silicico o in EPDM | Altre finiture : su richiesta |
| Semiflange e disco in AISI 316L | Vasta gamma di accessori |
| Facile installazione, facile da pulire (soprattutto nei modelli SR, CR e DR) | Tutte le valvole possono essere equipaggiate con attuatori pneumatici, finecorsa e elettrovalvole |
| Serie standard DN 100 - DN 400 | |
| Finitura standard : interna lucidata a specchio, esterna satinata | |

I componenti e le guarnizioni delle valvole in Silicone o in EPDM non sono intercambiabili con quelli in PTFE

MOMENTO TORCENTE TORQUE (NM)

| DN | 100 | 150 | 200 | 250 | 300 | 350 | 400 |
|------------------------------------|-----|-----|-----|-----|-----|-----|-----|
| TORQUE Guarniz. Silicone Nm | 20 | 31 | 80 | 110 | 130 | 160 | 185 |
| TORQUE PTFE Guarniz. Nm | 40 | 40 | 75 | 65 | 150 | 175 | 190 |

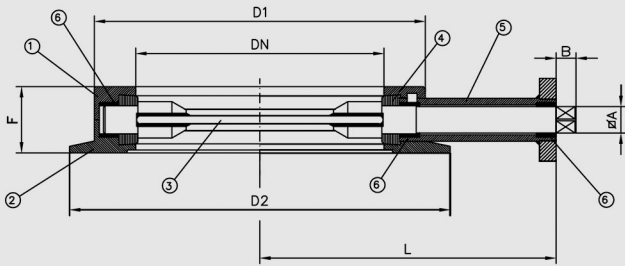
TOP FLANGE FOR ACTUATOR

| DN | 100 | 150 | 200 | 250 | 300 | 350 | 400 |
|--------------------------|-----|-----|-----|-----|-----|-----|-----|
| ISO 5211 Standard | F05 | F05 | F05 | F05 | F07 | F10 | F10 |

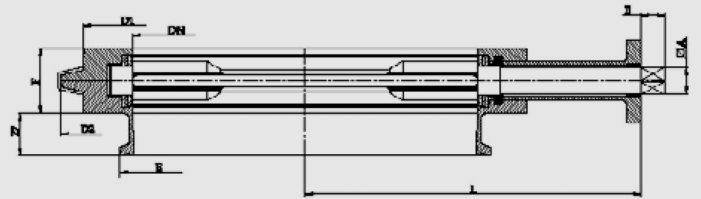
MATERIALI

| Descrizione | Materiale | Nr |
|-------------------|--------------------------------|----|
| FLANGIA SUPERIORE | EN 1.4404/316L | 1 |
| FLANGIA INFERIORE | EN 1.4404/316L | 1 |
| FARFALLA | EN 1.4404/316L | 1 |
| TENUTA | SILICONE FDA 177.2600 P.T.F.E. | 1 |
| SUPPORTO | EN 1.4403/304 | 1 |
| BOCCOLE | P.T.F.E. | 3 |

Serie BV



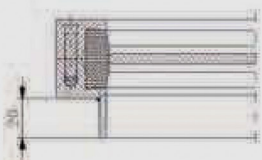
Serie BVT


DIMENSIONI

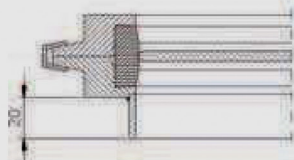
| DN | | D1 | D2 | F | L | A | B |
|-----|------|-----|-----|----|-----|-------|----|
| mm | inch | | | | | | |
| 100 | 4" | 150 | 180 | 36 | 131 | 11x11 | 16 |
| 150 | 6" | 200 | 230 | 40 | 177 | 11x11 | 16 |
| 200 | 8" | 250 | 280 | 40 | 202 | 11x11 | 16 |
| 250 | 10" | 300 | 330 | 44 | 227 | 14x14 | 16 |
| 300 | 12" | 350 | 380 | 46 | 254 | 17x17 | 19 |
| 350 | 14" | 400 | 430 | 46 | 291 | 22x22 | 24 |
| 400 | 16" | 450 | 500 | 50 | 316 | 22x22 | 24 |

MATERIALI

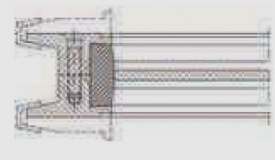
| Descrizione | Materiale | Nr |
|-------------------|--------------------------------|----|
| FLANGIA SUPERIORE | EN 1.4404/316L | 1 |
| FLANGIA INFERIORE | EN 1.4404/316L | 1 |
| FARFALLA | EN 1.4404/316L | 1 |
| TENUTA | SILICONE FDA 177.2600 P.T.F.E. | 1 |
| SUPPORTO | EN 1.4403/304 | 1 |
| BOCCOLE | P.T.F.E. | 3 |

TIPI DI CONNESSIONE


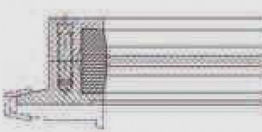
SX



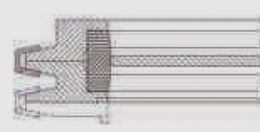
SR



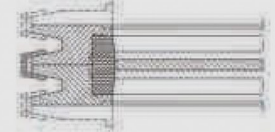
DC



CX



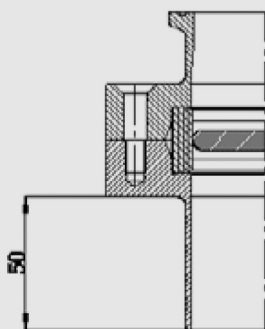
CR



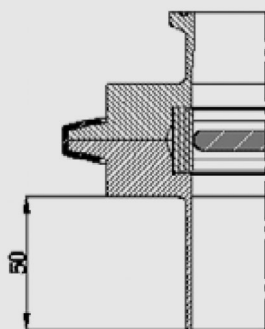
DR

DIMENSIONI

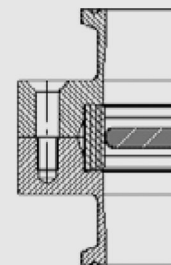
| DN | | D1 | D2 | A | B | E | F | L |
|-----|------|-----|-----|-------|----|-------|----|-----|
| mm | inch | | | | | | | |
| 100 | 4" | 150 | 180 | 11x11 | 16 | 119 | 36 | 131 |
| 150 | 6" | 200 | 230 | 11x11 | 16 | 167 | 40 | 177 |
| 200 | 8" | 250 | 280 | 11x11 | 16 | 217.7 | 40 | 202 |
| 250 | 10" | 300 | 330 | 14x14 | 16 | 268.5 | 44 | 227 |
| 300 | 12" | 350 | 380 | 17x17 | 19 | 319.3 | 46 | 254 |
| 350 | 14" | 400 | 430 | 22x22 | 24 | | 46 | 291 |
| 400 | 16" | 450 | 500 | 22x22 | 24 | | 50 | 316 |

TIPI DI CONNESSIONE


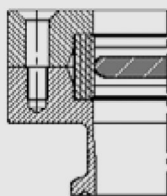
CXTW



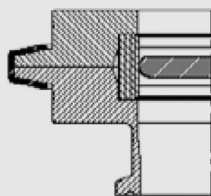
CRTW



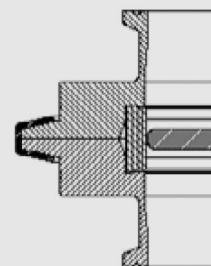
DCT



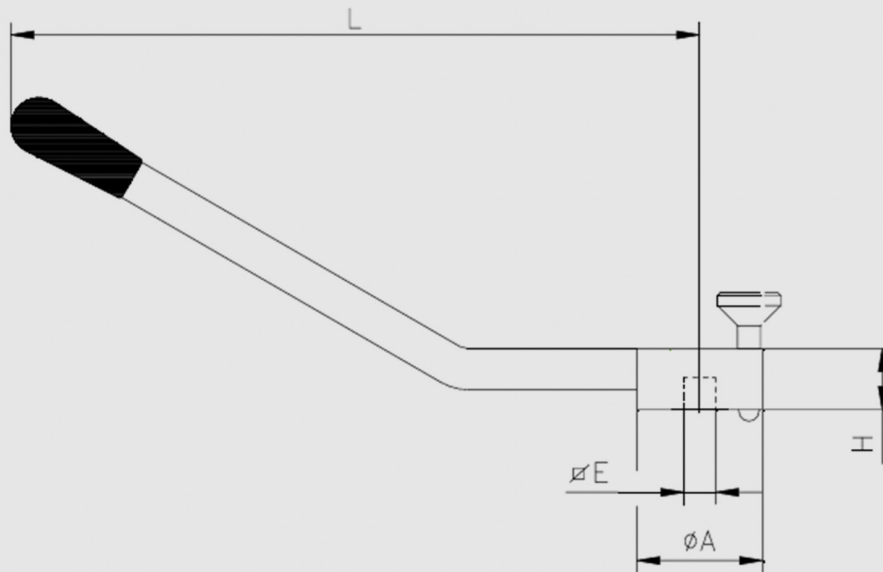
CXT



CRT



DRT

SISTEMI DI AZIONAMENTO - LEVA IN AISI 304

DIMENSIONI

| DN | | A | E | H | L |
|-----|------|----|-------|----|-----|
| mm | inch | | | | |
| 100 | 4" | 50 | 11x11 | 24 | 240 |
| 150 | 6" | 50 | 11x11 | 24 | 365 |
| 200 | 8" | 50 | 11x11 | 24 | 365 |
| 250 | 10" | 50 | 14x14 | 24 | 365 |
| 300 | 12" | 50 | 17x17 | 24 | 395 |